

IRIS Public Record

Key Information

Main: GROUP/0416/BOMBARDMENT (LIGHT)

Document Type:
 Call Number: **GP-416-SU-OP-S**
 IRIS Number: **00091883**

Revd:	Rel	1985/03/05
Indexer ID: 24	Entered Date:	
QC ID:	QC'd Date::	
Scanner ID:	Scanned Date:	
Acc ID	Acc Date:	

Accessions Notes:
 Old Accession Nbr:

Title:
 Beginning Date:
 End Date:
 Publication Date: **1944/06/15**

Classification **UNCLAS**

Media Roll #: **0000001709** First Frame: **4** Last Frame: **361** Linear Feet: **0**
 Old MFlm Roll # **B0530** Audio Rec:

NUMPAGE **357**

Title Extensions:

Abstract CONTAINS TARGET DATA AND INTERROGATION REPORT.

Descriptive
 Notes:

Title MISSION REPORTS

Added
Entries

Author:
Subject:

Major Command:

Administrative Markings

No Administrative Markings Listed

Security Review Information:

MISSION NO 88

LOADING LIST
BOX I
FLIGHT I

30 JUNE 1944

1. 645 R
MAJOR L.F. DUNN ✓
LT. H.T. ARRINGTON ✓
S/S A.L. MAYHEW
S/S H.A. MARION

4.

2. 724 A
LT. F.W. DEMAND ✓
LT. R.J. HANLON ✓
S/S K.L. JOHNSON
S/S C.W. MIDDLETON

3. 701 H
COL. H.L. MACE ✓
S/S R.M. GRISWOLD
S/S P.E. COULOMBE

FLIGHT II

1. 719 V
CAPT. R.B. PRENTISS ✓
LT. R.T. MC BRIEN ✓
S/S J.C. MC CREERY
S/S H.J. SYLVA

4. 176 T
LT. G.F. BARTMUS ✓
S/S J.R. ORR
SGT S.H. GIESY

2. 935 F-1
LT. C.C. MISH ✓
S/S C.J. CLARK
S/S R.F. CHUSTZ

5. 379 G
LT. C.J. ANDERSON ✓
SGT T.G. EUGA
SGT E.L. SCHAFER

3. 975 W
LT. R.R. SVENSON ✓
S/S P.G. FILD
S/S G.H. PFENNING

6. 195 D
LT. F.W. HARRIS ✓
S/S E.A. DAMICO
S/S D. HANTSKE

FLIGHT III

1. 640 Z
LT. J.R. MEAGHER ✓
LT. J.J. BURG ✓
T/S L.G. ROBBINS
S/S D.H. SIMPSON

4. 210 Q
LT. L.G. PEEDE ✓
SGT C. FETKO
SGT D.M. BROWN

2. 226 E
LT. E.B. KREH ✓
S/S D.R. SCHENCK
S/S E. SHELTON

5. 362 L
LT. J.P. KENNY ✓
SGT J.K. SPADONI
SGT F. NOTERIANI

3. 907 O
CAPT. H.F. COMANT ✓
S/S C.F. LOVE
S/S F.L. ADAIR

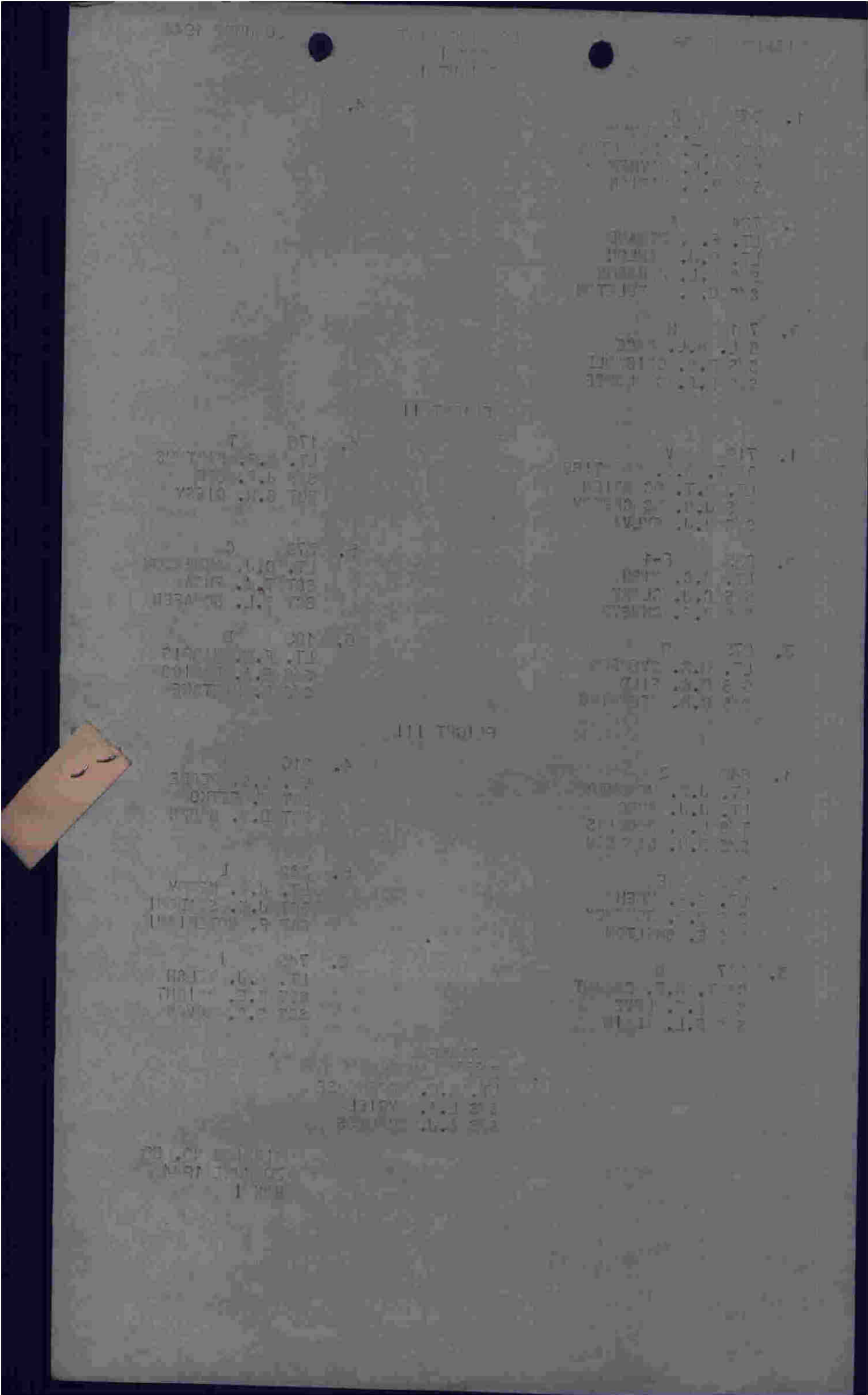
6. 745 I
LT. A.J. WELSH ✓
SGT R.E. WRIGHT
SGT S.G. NOVAK

SPARE

393 K
LT. R.C. MOREHOUSE ✓
S/S L.A. ZYGIEL
S/S A.J. BURGESS

MISSION NO. 88
30 JUNE 1944
BOX I

JUN 30 1944
2528



MISSION NO. 88

LOADING LIST
BOX II
FLIGHT I

30 JUNE 1944

1. 135 T
MAJOR R.A. CLARK ✓
LT. C.W. JONES ✓
S/S J.O. SCOTT
S/S D.F. MALLORY

2. 467 W
LT. R.S. RUDISILL ✓
LT. R.H. JOOST ✓
S/S R.K. RILEY
S/S A.J. BONAMO

3. 743 W-1
LT. W.C. SIGGS ✓
S/S R.W. NICKS
S/S N. RADLICH

FLIGHT II

1. 712 H
LT. R.J. MORTON ✓
LT. J. MADENFORT ✓
S/S C.L. WEBB
S/S F.M. CITY

2. 390 G
LT. N.V. SHAINBERG ✓
SGT L.B. KEMPER
SGT L.R. FLEMING

3. 147 K
LT. E.R. HAYTER ✓
S/S F.E. MELCHOIR
S/S R.G. HOLLOWAY

4. 840 V
LT. T. BOUKAMP ✓
S/S R.J. COLOSIMO
S/S J.S. WING

5. 717 N
LT. A.J. VLEGHELIS ✓
S/S R.W. RICE
S/S C.E. YOUNG

6. 376 O
LT. R.B. ROBERTSON ✓
SGT J.E. HAY
SGT J.A. BUSKIRK

FLIGHT III

1. 380 N-1
LT. H.A. MONROE ✓
S/S W.L. KIDD
S/S S. RISKO

2. 209 K-1
LT. R.B. HALL ✓
SGT D.S. BLACKFORD ✓
SGT L.C. BURGER

3. 892 L
LT. D.T. SOMMERS ✓
SGT S.R. ZAKLIKIEWCZ
SGT K.L. JOHNSON

4. 978 S
LT. R.J. ROONEY ✓
S/S H.M. MC CLEARY
S/S S.F. DI NAPOLI

5. 750 M
LT. N.G. BROWN ✓
S/S E.L. GRIFFIN
S/S C.W. MAZIASZ

6. 689 I
LT. P.E. GRUNIG ✓
SGT M.E. DIAS
SGT H.J. NOWOSIELSKI

SPARE

673 I-1
LT. H.B. CLARK ✓
S/S F.W. SABADOSH ✓
S/S D.F. FLOYD

MISSION NO. 88
30 JUNE 1944
BOX II

20 JUNE 1944

FLIGHT I

MISSION NO. 80

BOX 11

FLIGHT I

1. 1-1
 CAPT. J. CLARK
 LT. J. W. JAMES
 S/S J. C. SCOTT
 S/S E. E. WALDRY

2. 1-1
 LT. R. S. RUDISILL
 LT. E. H. JONES
 S/S W. K. GIBBY
 S/S J. J. GORMAN

3. 1-1
 LT. W. O. STILES
 S/S J. J. STILES
 S/S J. RUDISILL

FLIGHT II

1. 1-1
 LT. E. B. BROWN
 S/S J. J. BROWN
 S/S J. J. BROWN

2. 1-1
 LT. J. J. VITALE
 S/S J. J. VITALE
 S/S J. J. VITALE

3. 1-1
 LT. E. J. HASTON
 S/S J. J. HASTON
 S/S J. J. HASTON

1. 1-1
 LT. J. J. HORTON
 LT. J. J. HORTON
 S/S J. J. HORTON
 S/S J. J. HORTON

2. 1-1
 LT. J. V. SHANDERS
 S/S J. V. SHANDERS
 S/S J. V. SHANDERS

3. 1-1
 LT. E. J. WATTS
 S/S J. E. WATTS
 S/S J. E. WATTS

FLIGHT III

1. 1-1
 LT. J. J. HORTON
 S/S J. J. HORTON
 S/S J. J. HORTON

2. 1-1
 LT. J. J. HORTON
 S/S J. J. HORTON
 S/S J. J. HORTON

3. 1-1
 LT. J. J. HORTON
 S/S J. J. HORTON
 S/S J. J. HORTON

1. 1-1
 LT. J. J. HORTON
 S/S J. J. HORTON
 S/S J. J. HORTON

2. 1-1
 LT. J. J. HORTON
 S/S J. J. HORTON
 S/S J. J. HORTON

3. 1-1
 LT. J. J. HORTON
 S/S J. J. HORTON
 S/S J. J. HORTON

1-1
 LT. J. J. HORTON
 S/S J. J. HORTON
 S/S J. J. HORTON

20 JUNE 1944

FLIGHT I

BOX 11

MISSION NO. 88

LOADING LIST
BOX III

30 JUNE 1944

1. 450 S
LT. H.P. COLE ✓
LT. J.T. BECK ✓
S/S B.G. FANDRE
S/S F.R. CHVATAL

2. 9711 M
LT. D.L. WITHINGTON ✓
SGT C.F. HUSS
SGT L.D. MC ELHATTEN

3. 221 F
LT. W.A. MERCHANT ✓
S/S C.J. HARP
S/S K.P. BROWN

MISSION NO. 88
30 JUNE 1944
BOX III
WINDOW ONLY

30 JUNE 1948

MAIL ROOM
BOX III

MAIL ROOM NO. 88

1. S. J. L. WASHINGTON
2. S. J. L. WASHINGTON
3. S. J. L. WASHINGTON

1. S. J. L. WASHINGTON
2. S. J. L. WASHINGTON
3. S. J. L. WASHINGTON

1. S. J. L. WASHINGTON
2. S. J. L. WASHINGTON
3. S. J. L. WASHINGTON

30 JUNE 1948
MAIL ROOM
BOX III

OPERATIONAL PRIORITY

FROM 416TH BOMB GROUP (L)

TO : IX BOMBER COMMAND

TO: 97TH COMBAT WING

416 BG U 463 E

CONFIDENTIAL IN THE CLEAR

"J" FORM OPERATIONAL CLEARANCE F-5 30 JUNE 1944

PREPARED BY MAJOR HAROLD A. RADETSKY

A.

B. 1636

C. BRACHYHEAD

D. BOX I R/T UPSTART ONE

671 3 R A N

668 12 H V F-1 W T G D Z O Q L I

671 1 (SPARE) K

GROUP LEADER 671 R

DEPUTY 671 A

BOX II R/T UPSTART TWO

669 8 T W-1 H G K V N O

670 7 W N-1 K-1 L S M I

669 1 (SPARE) L-1

SECOND BOX LEADER 669 T

DEPUTY 670 W

BOX III R/T UPSTART T HREE

669 1 S

671 2 M F

THIRD BOX LEADER 669 S

E. 12,000

F. 49 DEGREES 49 MINUTES NORTH 00 DEGREES 32 MINUTES EAST

G. 1652

H. 48

J. CABOURG

K. BRIGHTON

L. 1806

M. 1. E.T.D. 1546 E.T.A. 1840

2. 4 AND 6 x 500 GP

3. 4 HOURS

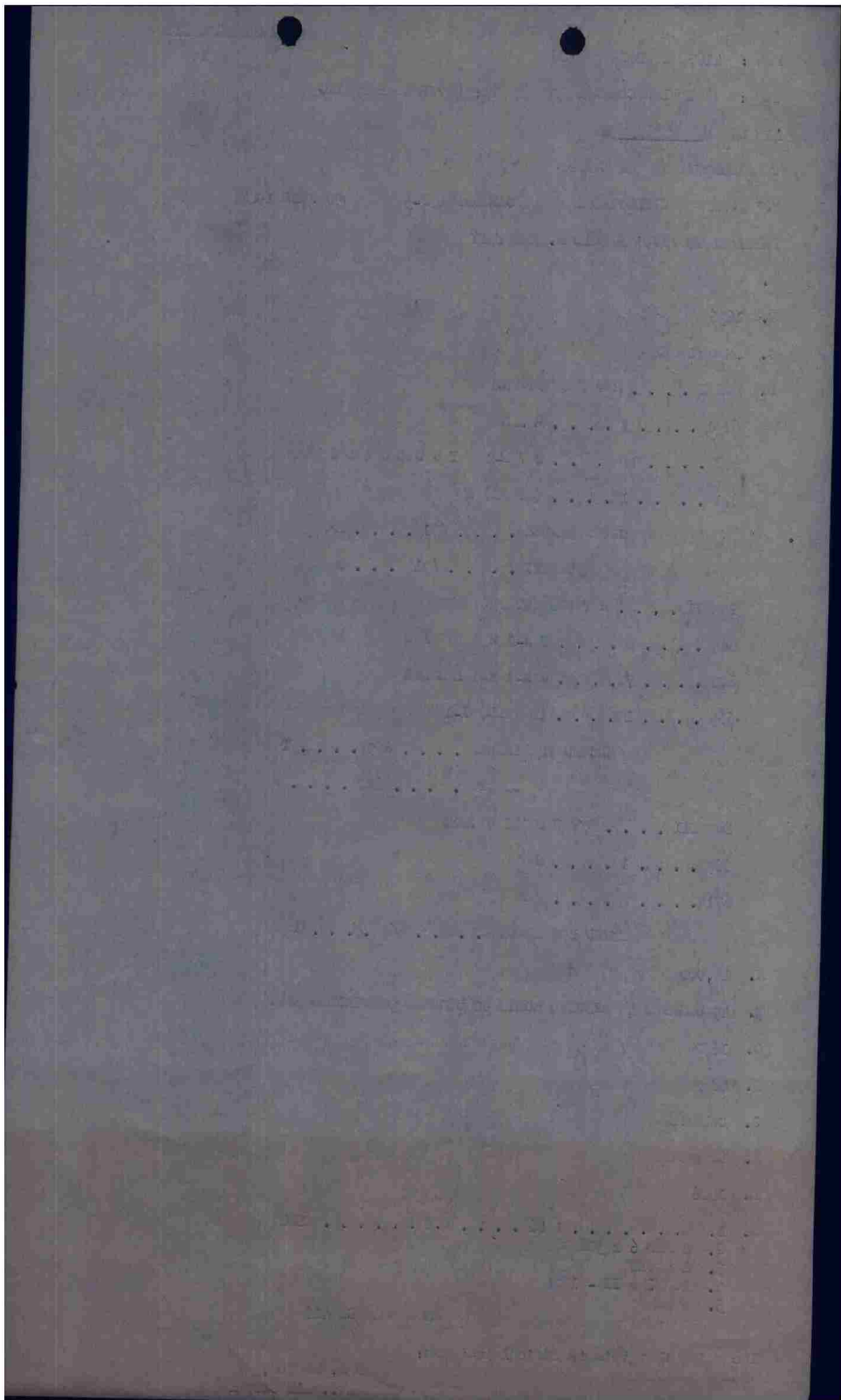
4. BOX I & II - 1724

5. NONE

MACE COBOMGR 416

I certify that this is official business:

JOHN M. BONURA,



CONFIDENTIAL
HEADQUARTERS
416TH BOMB GROUP (L)
OFFICE OF THE WEATHER OFFICER

Open

APO 140
30 June 1944

SUBJECT: Interrogation Report

TO : Staff Weather Officer, Headquarters IX
Bomber Command, APO 140, U. S. Army.

BASE AT TAKEOFF: 7/10 to 8/10 cumulus and stratocumulus
at 2,500 feet. 9/10 to 8/10 cirrus above
20,000 feet. Visibility 6 miles.

ROUTE OUT: Same as base over England with low cloud becoming
nil over channel and cirrus increasing to 4/10
to 6/10. Low cloud became 10/10 over continent.
Visibility 6 to 8 miles.

TARGET: 9/10 low cloud and 10/10 cirrus above 20,000 feet.
Visibility 6 to 8 miles.

ROUTE BACK: Same as route out.

BASE ON RETURN: 7/10 to 8/10 cumulus at 3,500 feet. 2/10
to 3/10 alto cumulus at 7,000 feet.
Visibility 8 miles.

WINDS: As forecast.

TIME OVER TARGET: 1724

EFFECT OF WEATHER ON BOMBING: Bombing was done on pathfinder
although visual bombing could have been done but clouds
would have necessitated a short bomb run.

Robert D. Griffith
ROBERT D. GRIFFITH
2nd Lt., Air Corps.

1 Incl
3 Route Forecast Forms.

CONFIDENTIAL

WEATHERS FIELD
416TH BOMB GP (L)

TAKEOFF - 1525
RETURN - 1840

CONFIDENTIAL *Open*

OPERATIONAL ROUTE FORECAST

DATE 30 JUNE 1944
PERIOD 1600 - 2000

Hq SOS USAFP 9-43/90M/15227

	A	B	C	D
	BASE TO TARGET	TARGET	TARGET TO BASE	
WEATHER	1 CLOUDY	CLOUDY	CLOUDY	
CLOUDS	2 FEW CIRRUS ABOVE 20,000 FT BECOMING 7-9/10 OVER CHANNEL W CONTINENT NIL MEDIUM CLOUDS BECOMING 4-5/10 ABOVE S. COAST W CONTINENT BASES 12-13,000 FT TOPS 15,000 TO 16,000 FT 6-7/10 CUMULUS BASES 2,500-3,000 FT TOPS 6,000 TO 6,500 FT	6-9/10 TRAIL CIRRUS ABOVE 20,000 FT 7-10/10 MEDIUM CLOUD BASE 12-15,000 FT TOPS 15,000-16,000 6-7/10 HIGH CLOUDS	SIMILAR TO ROUTE OUT EXCEPT CUMULUS DECREASING OVER ENGLAND TO 3-5/10 BASES 3,000-4,000 FT TOPS 5-6,000 FT	
ICING	3 MODERATE RIME IN MEDIUM CLOUDS	SAME	SAME	
VISIBILITY	4 4-8 MILES AT BASE 2.5 MILES IN LONDON AREA 4 MILES OVER CHANNEL AND CONTINENT	6 MILES PLUS	SAME AS ROUTE OUT	
HEIGHT SURFACE	DIRECTION VELOCITY	DIRECTION VELOCITY	DIRECTION VELOCITY	DIRECTION VELOCITY
5,000 FT	230 BASE 14	210 TARGET 14		
10,000 FT	260 20	240 20		
15,000 FT	270 25	250 25		
20,000 FT	270 30	260 30		
25,000 FT	280 35	280 35		
FT				

BASE ALTIMETER SETTING 29.86

TARGET SURFACE TEMP +16
TEMP AT 4,000 FT. -4°C

TARGET MEAN TEMP +3.5°C
TARGET SURFACE (PRESSURE-ALT) +181

CONFIDENTIAL

AIRCRAFT REPORT

		BASE TO COAST	OVER CHANNEL OR SEA	OVER CONTINENT & TARGET
TIME				
POSITION				
ALTITUDE				
CLOUD BELOW AIRCRAFT	AMOUNTS AND TYPE			
	HEIGHT OF BASE AND TOP			
CLOUD ABOVE AIRCRAFT	AMOUNTS AND TYPE			
	HEIGHT OF BASE AND TOP			
VISIBILITY				
TEMPERATURE				
WINDS				
REMARKS: AS WEATHER ENCOUNTERED, FRONTAL POSITIONS, ETC.				
<p>NOTE: AT LEAST ONE COMPLETE OBSERVATION SHOULD BE ENTERED IN EACH COLUMN. THE OTHER SIDE OF THIS CARD HELPED YOU - WON'T YOU GIVE THE NEXT FELLOW A BREAK!</p>		<p>CLOUD TYPES AND ABBREVIATIONS</p> <p>LOW CLOUDS = ST-STRATUS SC-STRATOCUMULUS MIDDLE CLOUDS = AS-ALTOSTRATUS AC-ALTOCUMULUS HIGH CLOUDS = CI-CIRRUS CS-CIRROSTRATUS CLOUDS OF VERTICAL EXTENT = CU-CUMULUS CB-CUMULONIMBUS</p>		
		<p>FRONTS -</p>		

S R D N	A / C LTR	A / C NO.	PILOT	D I S T A N C E	T A R G E T	A T O	E N G . C O A S T O U T	E N E M Y C O A S T I N	T O T	E N E M Y C O A S T O U T	E N G . C O A S T I N	C A M E R A	F U L L O A D	B O M B O A D	E N D U R	E L A N D I M E	R E M A R K S
B	R	615	Quinn	503		1524										1836	
A	A	724	Robinson			1525										37	
A	H	701	Mace			1525										37	
A	V	719	Greenline			1525										41	
A	F-1	935	Miel			1525										42	
A	W	915	Wingman			1526										45	
A	T	176	S. F. Bostrom			1526										43	
A	B	379	Anderson		Not in line												
A	B	195	Harris			1526										44	
A	Z	640	Meagher			1527										45	
A	E	334	Fuchs			1538										43	
A	O	907	Conant			1527										46	
A	Q	210	Feeder			1527										47	
A	L	362	Tommy			1528										47	
A	F	745	McEldig			1528										48	
A	K	393	Moulhouse			1508										46	grave
B	26	675				1534											

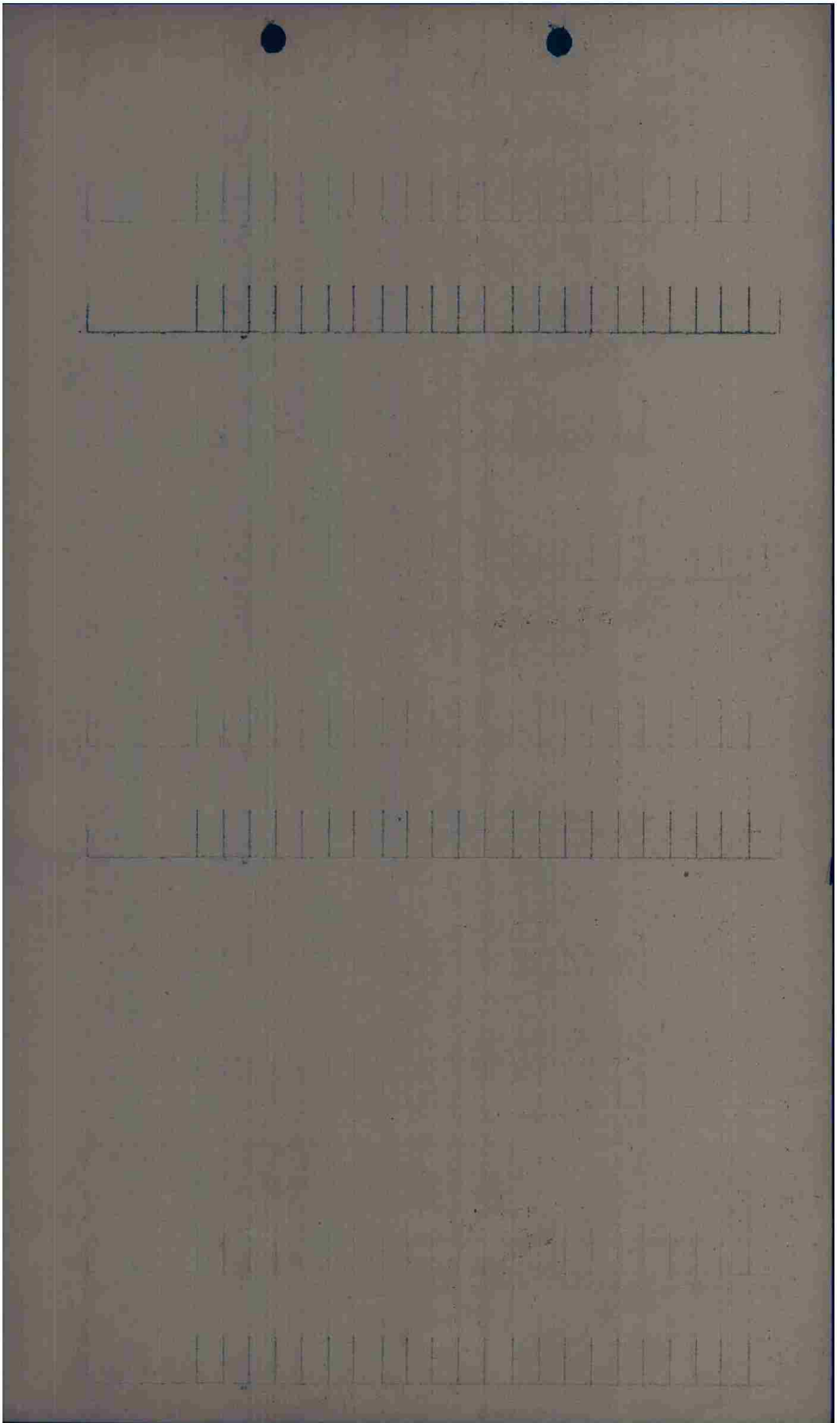
Mission #88

*1524
1524
1524
1524*

30

1944

Part I



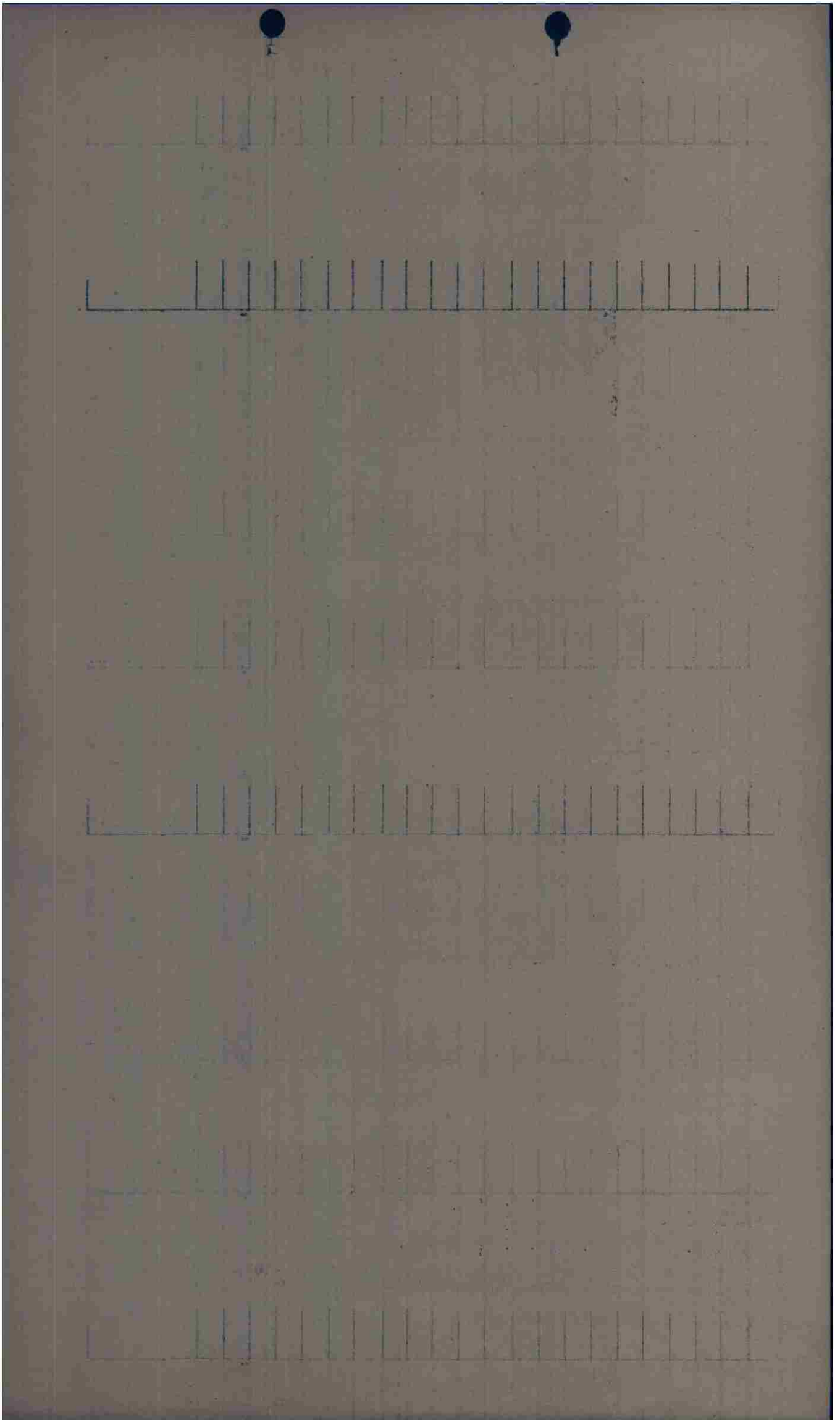
Mission #88

Box II

30 June 1944

S Q D N	A / C LTR	A / C NO.	PILOT	D I S T A N C E	T A R G E T	A T O	E N G . C O A S T O U T	E N E M Y C O A S T I N	T O T	E N E M Y C O A S T O U T	E N G . C O A S T I N	C A M E R A	F U L L O A D	B O M B O A D	E N D U R	L A N D I N G T I M E	R E M A R K S
B-1	T	135	Clark			1530										1858	
B-1	W	467	Fudriller			1531										49	
B-1	W	743	Leggett			1531										50	
B-1	H	712	Wojtan			1531										50	
B-1	g	390	Hamling			1532										51	
B-1	K	417	Wattson			1532										52	
B-1	V	840	John Bange			1532										52	
B-1	N	417	Wojtan			1533										53	
B-1	O	376	Robertson			1533										1900	
B-1	N	380	Thomas			1533										1854	
B-1	K	209	Steele			1533										59	
B-1	L	892	Stamm			1534										55	
B-1	S	978	Spencer			1534										56	
B-1	M	750	Green			1534										56	
B-1	I	689	Young			1534										59	
B-1	I	678	Clark			1535										1119	Spore
B-1	I	926				1536											

Targeted Early



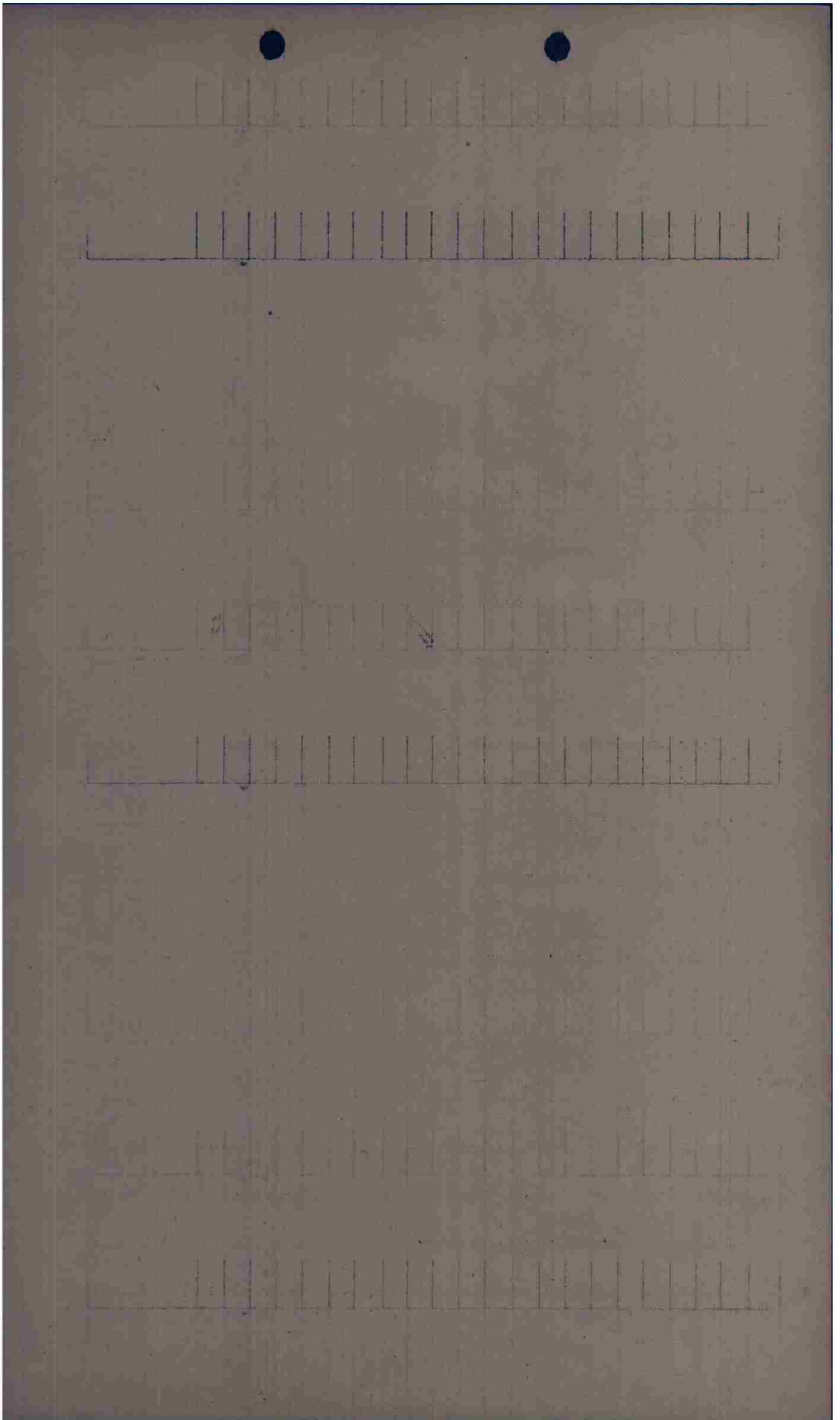
Maxwell #88

Box III

S Q D N	A / C LTR	A / C NO.	PILOT	D I S T A N C E	T A R G E T	A T O	E N G. C O A S T O U T	E N E M Y C O A S T I N	T O T	E N E M Y C O A S T O U T	E N G. C O A S T I N	C A M E R A	F U L L O L D A D	B O M B O R D A D	E N D U R	L A T I T U D I N E	R E M A R K S
B1	S	450	<i>Cole</i>			1535										1838	
B1	M	9711	<i>McKington</i>			1535										38	<i>38</i>
B1	F	221	<i>Mercant</i>			1536										39	<i>39</i>

30

Page 10/44



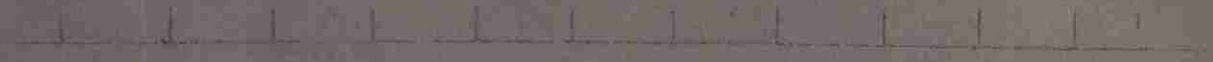
25

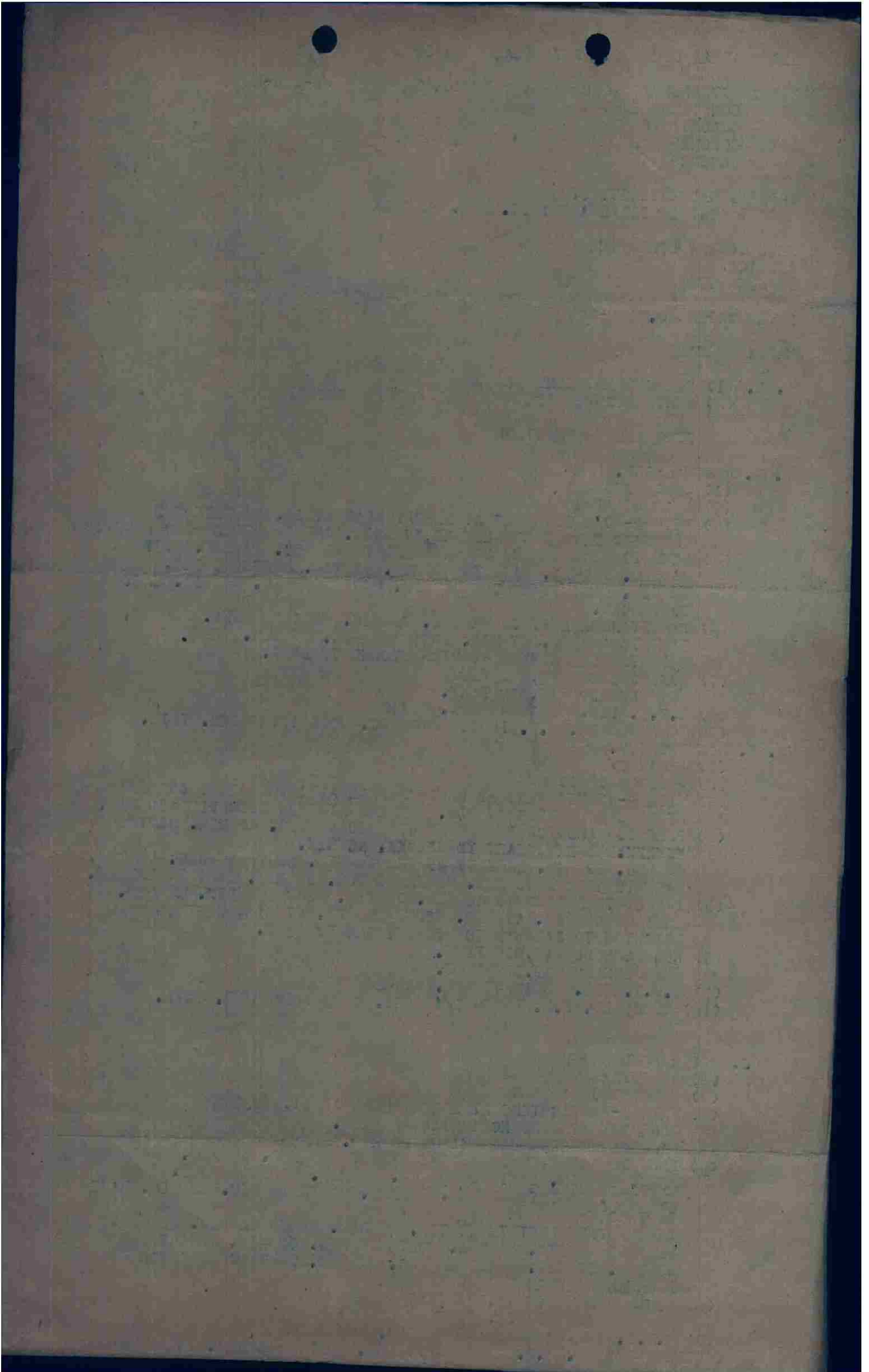


43
57
12

23

120





- X. (1) TO (4) NO CHANGE
 (5) BOMB ON PPF A/C REGARDLESS OF WEATHER CONDITIONS.
 BOMB VISUAL ONLY IF PPF A/C HAS MALFUNCTION AND CANNOT
 RELEASE AND INFORMS FORMATION LEADER TO BOMB VISUAL
 (6) ALL GROUPS WILL RENDEZVOUS WITH PPF A/C OVER THEIR
 RESPECTIVE FIELDS

4. NO CHANGE

5. COMMUNICATIONS:

A. 409TH BOMB GROUP.
 (2) BROADLONG
 (3) ANGELA

B. 410TH BOMB GROUP.
 (2) TIDWAY
 (3) HODDY

C. 416TH BOMB GROUP.
 (2) UPSTART
 (3) TOWNER

X. GENERAL INFORMATION.

- (3) SUBSTITUTE 10A FOR 3A, 13G, FOR 9G
 (8) "C" SIGNAL ON SOUTHERN UTAH AND SOUTHERN ARIZONA INOPERATIVE
 BETWEEN 1700-1800. OTHER GEE INFORMATION S.O.P.
 (10) BATV/BATV

COCBTWIG 97

BT 30/1640B
 LCB/WCB AR

- CC: 3. A. (5) TARGET TURN LEFT TO 48 DEG. 50 MIN. NORTH
 00 DEG. 22 MIN. WEST TO 48 DEG. 50 MIN. NORTH
 00 DEG. 02 MIN. EAST TO 49 DEG. 17 MIN. NORTH
 00 DEG. 07 MIN. WEST TO BRIGHTON TO FARNHAM TO HIGH WYCOMB
 TO BASE.
 3. B. (3) WITH P-47 FIGHTERS AT BEACHY HEAD AT 10,000 FEET
 ONE BOX AT ZERO HOUR PLUS 59 MIN. ONE BOX AT ZERO
 HOURPLUS 60 MIN.

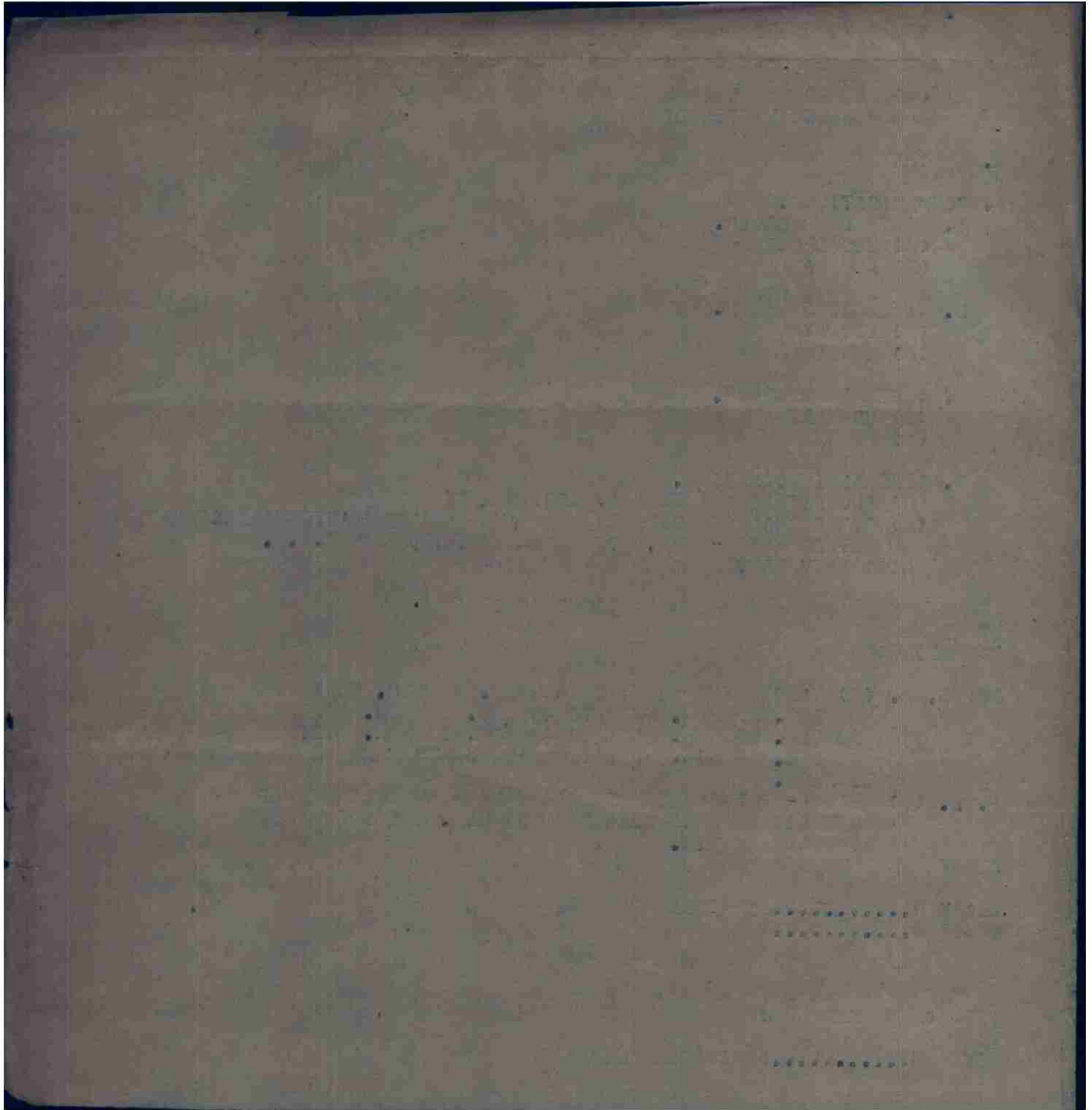
OIGOF

OIHAK R.....30/1730B FR AR K
 OIGOF R.....

,33\$:KK NEED CC: PLS
 TIC

OIYAA R.....30/1727B JMD AR

THIS PAGE DECLASSIFIED IAW EO12958



THIS PAGE DECLASSIFIED IAW EO12958

COG V YAA YAA 25/30 P

FROM 416TH BOMB GROUP, NINTH BOMBER COMMAND 30/2210B
MO ADV. . HQS. 9TH AIR FORCE ATT: A-2

XX U-476-D CONFIDENTIAL PRIORITY 30 JUNE 1944

FIRST PHASE REPORT S/A PHOTOS 30 JUNE 1944

A. THURY-HARCOURT

B. SMME AS A

K. BOMBS FELL IN GOOD CONCENTRATION APPROX 590 FT. WEST OF DESIRED
M.P.I. POSSIBLE HITS OR NEAR MISSES ON NORTH-SOUTH HIGHWAY.

BT 30/2210B

JMD AR AR

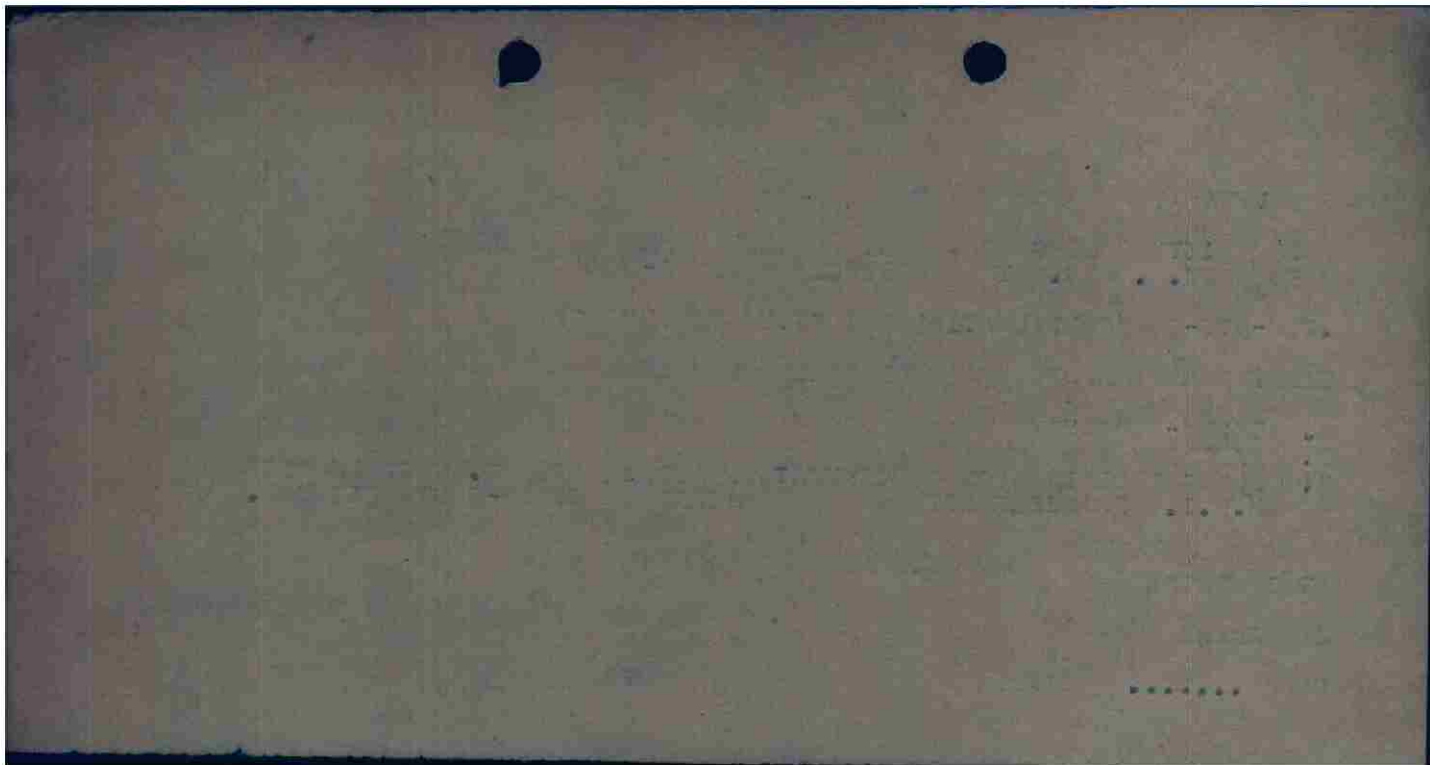
COG R.....

30/2242V

ELI

BBBBB

THIS PAGE DECLASSIFIED IAW EO12958



THIS PAGE DECLASSIFIED IAW EO12958

GICOG OILAI V YAA YAA 19/30 OP

FROM 416TH BOMB GROUP (L) 30/2015B
 TO HQ IX BOMBER COMMAND ATTN: A-2
 HQ 97TH COMBAT WING ATTN: A-2

U-469-D XB OPERATIONAL PRIORITY CONFIDENTIAL

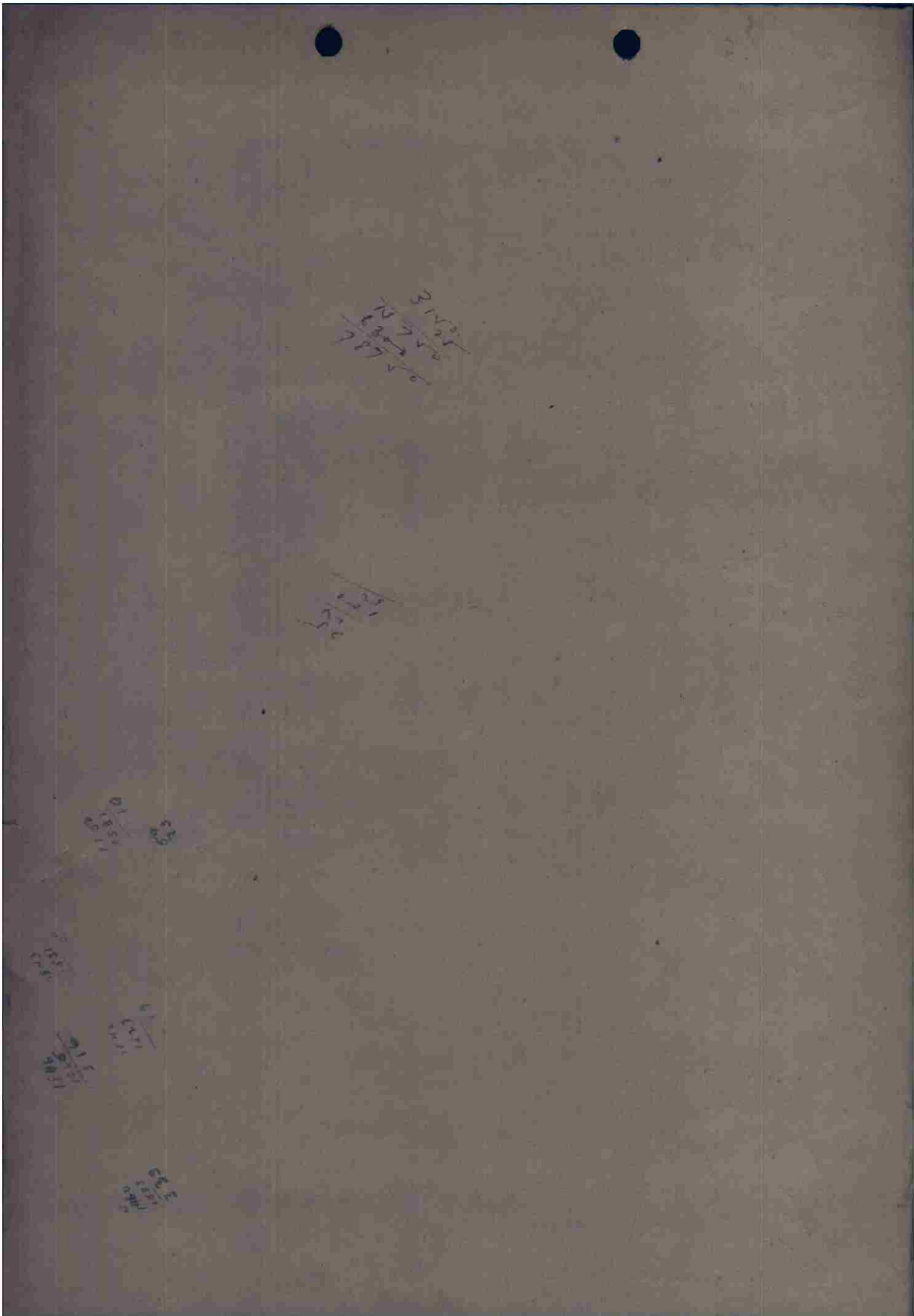
OPFLASH NO. 57 FOR 30 JUNE 1944

- A. (1) THURY-HARCOURT V/V R/S
 (2) THURY-HARCOURT R/S
- B. (1) 416TH BG
 (2) 33 A-20'S INCLUDING 3 CARRYING WINDOW ONLY 2 B-26'S
 (3) 15 A-20'S, 1 B-26-- PATHFINDER EQUIPMENT FAILURE-- NO DROPPING
 SIGNAL GIVEN BY PATHFINDER XX A/C
 (4) 15 A-20'S, 1B-26 ON PRIMARY
- C. (1) 1524
 (2) 1724 1726
 (3) 1900
- D. (1) NIL
 (2) B-B-B
 (3) B-B-B
- E. BOX I A- GOOD CONCENTRATION AT EDGE OF WOODS SOUTH WEST OF BRIEVED
 N.P.I
 BOX II NO ATTACK
- F. (1) (A) NIL
 (B) NIL
 (2) (A) VERY MEAGER INACCURATE H.F.F. AT TARGET AREA (UNSEEN FIRE)
 (B) NIL
- G. AT 16 1753 AT 50 DEGREES 18 MIN NORTH 00°08"W DINGHY SIGHTED
 FROM ALTITUDE OF 9000 FEET (PREVIOUSLY REPORTED AS HOT NEWS)
 AT 1743 AT 49 DEGREES 33 MIN NORTH 00 DEGREES 12 MIN WEST
 SMALL YELLOW OBJECT BELIEVED TO BE DINGHY SIGHTED FROM 11500 FEET.
 (PREVIOUSLY REPORTED AS HOT NEWS)
 AT 1738 LARGE OIL SLICK AT MOUTH OF SEINE RIVER
 AT 1724 TRAIN OF 15-20 CARS SEEN IN N/Y AT TARGET (PREVIOUSLY
 REPORTED)
- H. (1) 9/10 OVERCAST WITH SCATTERED OPEN AREAS
 (2)
- I. 57 X 500 G.P. ON PRIMARY
 6 X 300 G.P. ON PRIMARY-CARRIED BY B-26
 74 X 500 G.P. RETURNED
 1 6 X 300 G.P. RETURNED- CARRIED BY B-26
- J. BOX I - 11600
 BOX II - 12500

BT 30/*2015B
 AS

OJMD AR AR

GICOG R.....30/2045B FIG AR
 UOICOG
 OILAI R.....61730/2045B EK AR



53
CONFIDENTIAL

FROM COBOMGR 416

TO COCBTWIG 97 ATTⁿ SIG O

A - YS - 83

B - 30 JUNE 1944

C - 30 A/C

D - 671 - A - TRANSMITTER WEAK - RETUNED AND CHECKED OKAY.

689 - T - CHANNEL C AND INTERPHONE UNSATISFACTORY - CHANNEL
C RETUNED AND INTERPHONE TUBE REPLACED.

668 - P - LEFT MAG LEFT ENGINE CAUSING NOISE IN VHF - REPORTED
TO ENGINEERING.

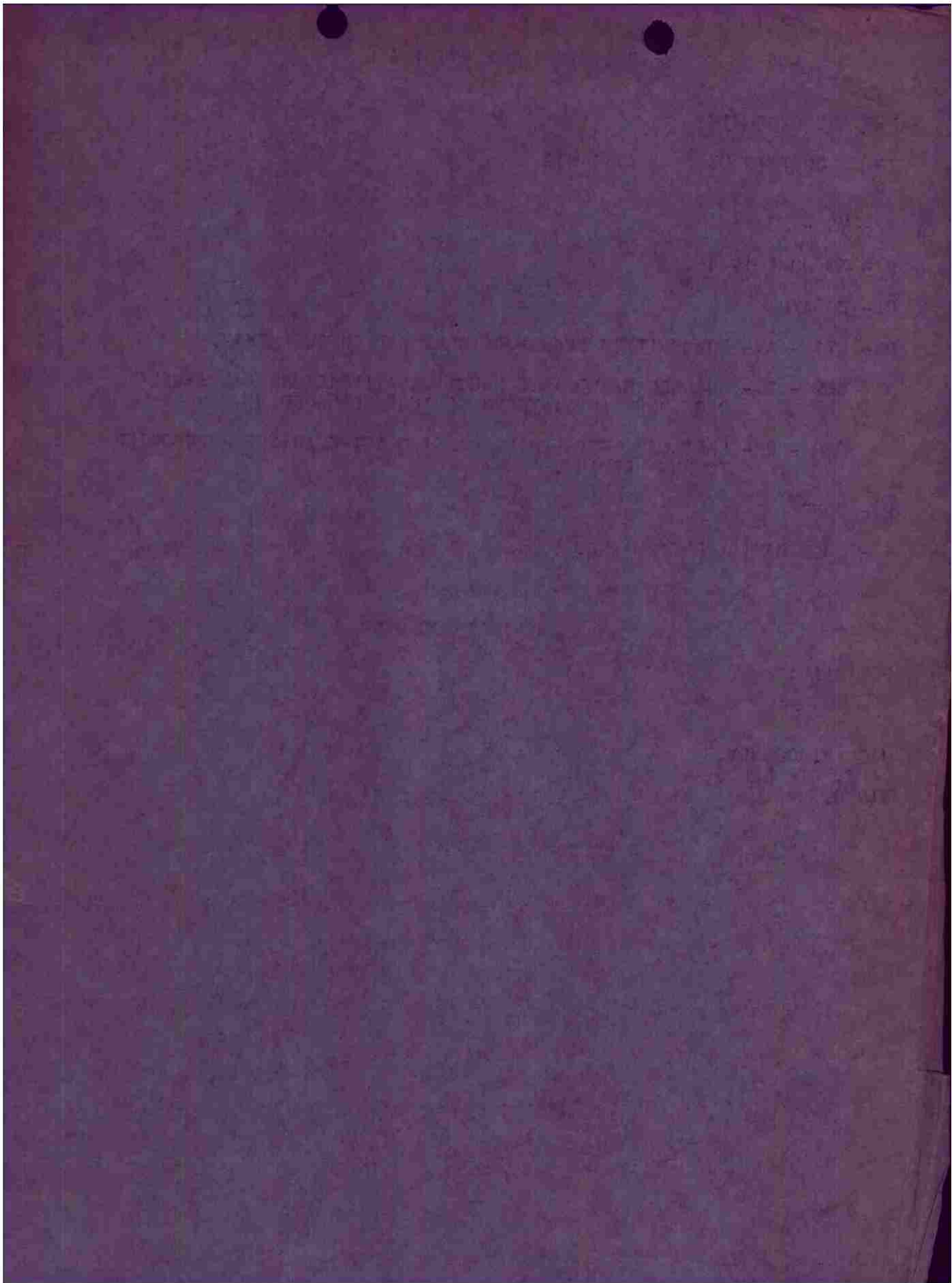
E - NONE

F - GOOD RADIO PERFORMANCE.

MACE COBOMGR

OFFICIAL:

JACK B. DOONEY,
CAPT, AIR CORPS,
SIG O.



CONFIDENTIAL

HEADQUARTERS 416TH BOMBER GROUP
RADAR OFFICE

APO 140 USA ARMY
22ND JUNE, 1944

- 1. RCM DISPENSING 10.
- 2. 30TH JUNE, 1944
- 3. THURY HARCOURT.
- 4. 4955'N 00°48'E.
- 5. 48°59'N 00°28'E.
- 6. 12.
- 7. 150
- 8. 2600
- 9. 11500'
- 10. 8/10TH.
- 11. WEAK, HEAVY.
- 12. IN ACCURATE.
- 13. 15 SEC.
- 14. NONE.
- 15. LITTLE FLAK NOTICED. WHAT THERE WAS FIRED AT THE 2ND BOX AND WAS LOW.

- 1. RCM PROTECTION 10.
- 2. FIRST BOX 416TH BOMB GROUP AND 3 SPECIAL DISPENSING PLANES.
- 3. 30TH JUNE, 1944.
- 4. THURY HARCOURT.
- 5. 49005'N 00°48'E.
- 6. 16.
- 7. 12000 FT.
- 8. 30 SEC.
- 9. WEAK, HEAVY.
- 10. INACCURATE.
- 11. 15 SEC.
- 12. NONE.
- 13. NONE.

CHARLES F. GUNDERSON
1ST LT., CAC
RADAR OFFICER.

