

IRIS Public Record

Key Information

Main: GROUP/0416/BOMBARDMENT (LIGHT)

Document Type:
 Call Number: **GP-416-SU-OP-S**
 IRIS Number: **00092037**

Rev'd:	Rel	1985/03/05
Indexer ID: 33	Entered Date:	
QC ID:	QC'd Date::	
Scanner ID:	Scanned Date:	
Acc ID	Acc Date:	

Accessions Notes:
 Old Accession Nbr:

Title:
 Beginning Date:
 End Date:
 Publication Date: **1945/03/01**

Classification **UNCLAS**

Media Roll #: **0000001717** First Frame: **988** Last Frame: **0** Linear Feet: **0**
 Old MFlm Roll # **B0537** Audio Rec:

NUMPAGE **0**

Title Extensions:

Abstract

Descriptive
 Notes:

Title MISSION REPORTS: TARGET LANDING GROUND LIPPE, GERMANY

Added

Entries

Author:

Subject:

Major Command:

Administrative Markings

No Administrative Markings Listed

Security Review Information:

GP-416-SH-OP-S
11 MAR 1945

A-26 MISSION REPORTS

FOLDER NO. 5

P.R.C.

MISSION NO.	F. O. NO.	DATE
218	185 - 770	1 MAR. 45
219	186 - 771	2 MAR. 45
220	188 - 773	3 MAR. 45
221	190 - 776	4 MAR. 45
222	191 - 777	5 MAR. 45
223	192 - 778	5 MAR. 45
224	193 - 779	6 MAR. 45
225	195 - 781	8 MAR. 45
226	196 - 782	9 MAR. 45
227	196 - 782	9 MAR. 45
228	197 - 783	10 MAR. 45
229	198 - 785	11 MAR. 45
230	199 - 786	11 MAR. 45

00002037

DECLASSIFIED
DOD DIR 5200.9, 2/ Sep 58

~~MICROFILMED~~

7886-4E

6 MARCH 1945

MISSION NO. 224

LOADING LIST
BOX I
FLIGHT I

- 1. 521 N
Lt. Col. J.C. Napier
Lt. D.L. Moore
Lt. R.J. McQuade ✓ 4:40
S/S R.P. Sharp, Jr. ✓ 3:20
- 2. 508 Z 5:30 ✓
Lt. C.C. Mish ✓ 3:30
Lt. R.E. Shaft ✓
S/S J.H. Roberts ✓
- 3. 314 H
Lt. E.O. Martin ✓ 4:20
Sgt W.R. Summers, Jr. ✓ 3:30

- 4. 344 G
Lt. D.O. Turner ✓
S/S M.R. Reyes ✓ 5:20
3:20

- 5. 381 Q
E/O F.W. Swap ✓
Sgt N. Meliniotis ✓ 5:15
3:20

- 6. 1263 G
Lt. A.W. Depner ✓ *Rtd Party*
Sgt R.H. Gillispie ✓ *Blue Lick*
Bombay

FLIGHT II

- 1. 498 B 4:50
Capt. H.F. Pair ✓ 3:25
Lt. J.L. Corum ✓
S/S H.B. Fessler ✓

- 2. 313 B 4:50
Capt. A.C. Sears ✓ 3:15
M/Sgt J.J. Wells ✓

- 3. 356 G-1 4:55
Lt. J.W. Spires ✓ 3:15
Sgt R.W. Messinger ✓

- 4. 239 N-1 6:54
Capt. S.M. Nixon ✓ 3:15
Sgt K.W. Schmidt ✓

- 5. 249 F 6:50
Capt. L.C. Nielsen ✓
Capt. L.P. Handies ✓ 3:40
Pvt E.R. Elliott ✓

- 6. 237 D 6:50
Lt. J.R. Wright ✓ 4:00
Sgt R.D. Redding ✓

FLIGHT III

- 1. 499 G-1 5:00
Lt. J.A. Duskirk ✓
Lt. R.C. Hanna ✓ 3:25
S/S G.H. Corbitt ✓

- 2. 300 K 5:50
Lt. W.R. Jokinen ✓ 3:15
Sgt D.E. McNellis ✓

- 3. 419 Z-1 5:55
Lt. D.L. Withington ✓
S/S L.D. McElhatten ✓ 3:25

- 4. 209 M 6:00
Lt. T.J. Murrey ✓ 3:25
S/S O.E. Swank ✓

- 5. 332 P 4:10
Lt. T.E. Graeber ✓
Sgt A.H. Miller ✓ 3:25

- 6. 297 T 6:30
Lt. J.H. Miller ✓ 3:25
S/S R.J. Brown ✓

SPARE

- 224 E 6:00
Lt. J.A. Willard ✓
Sgt C.V. Hinker ✓ 3:15

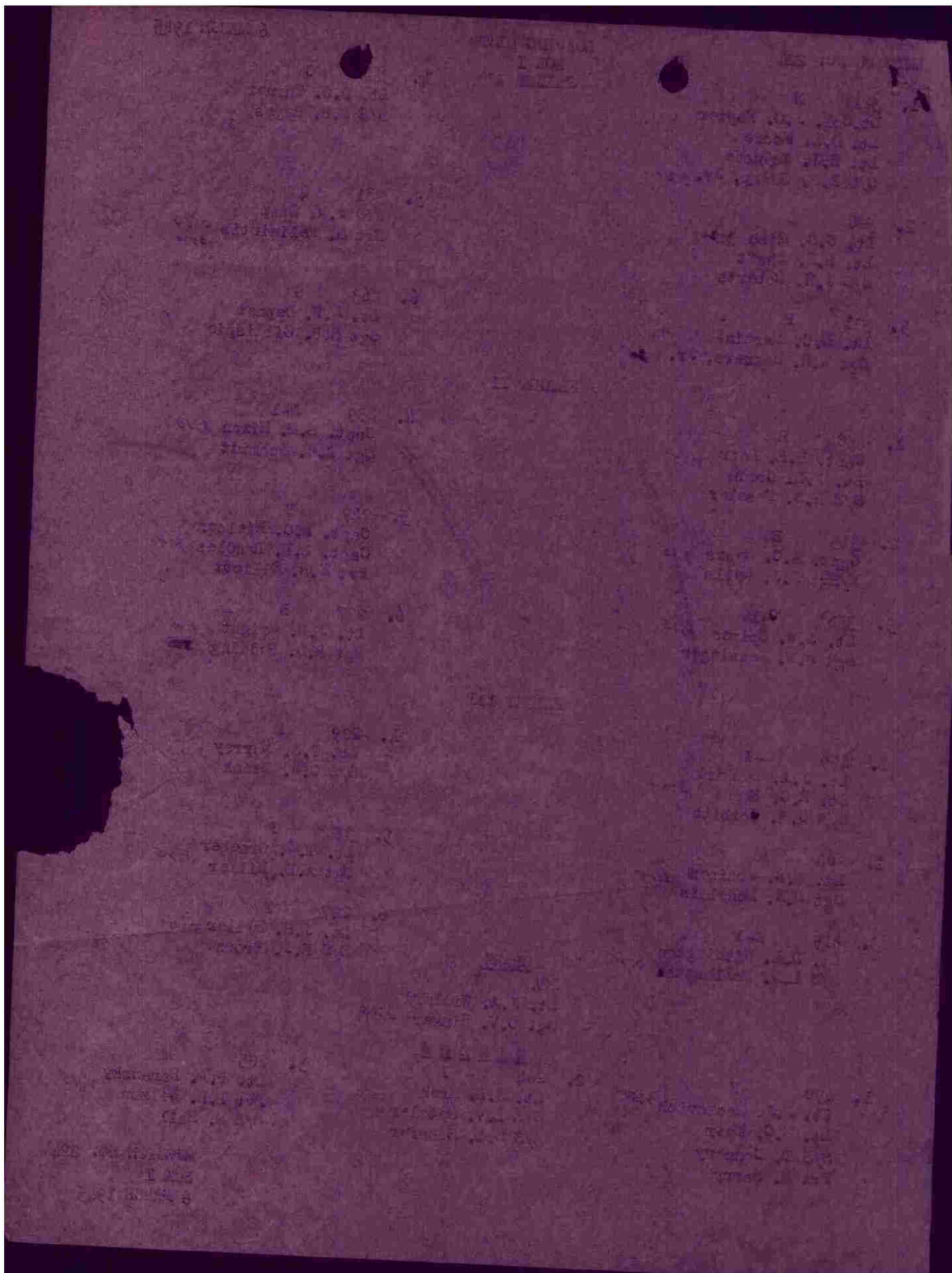
WINDOM

- 2. 264 I 5:15
Lt. E.B. Kresh ✓ 2:50
S/S L.V. Metzler ✓
S/S E.L. Schafer ✓

- 3. 490 X 4:50
Lt. J.J. Lackovich ✓ 2:50
Lt. R.C. Muir ✓
S/S T. Connery ✓
Pvt M. Barry ✓

- 3. 205 M 6:35
Lt. P.P. Barausky ✓ 2:45
Pvt E.R. Wilson ✓
S/S M. Hall ✓

MISSION NO. 224
BOX I
6 MARCH 1945



MISSION NO. 224

LOADING LIST
BOX II
FLIGHT I

6 MARCH 1945

1. 487 J
Lt. E.L. Miller ✓
Lt. J.K. Conner ✓ 500
S/S J.M. Pemberton ✓ 3:15
Lt. G.G. Johnson

2. 501 W 495
Lt. W.R. Heinko ✓ 3:15
Lt. A.E. Rosenquist ✓
S/S G.B. Van Wert ✓

3. 354 S
Lt. C.E. Weinert ✓
Sgt R.D. Francis ✓ 3:20

4. 362 Y
Lt. C.S. Jordan ✓ 550
S/S K.F. Jensen ✓ 3:15

5. 271 R
Lt. D.E. Smith ✓
Sgt S.J. Kirik ✓ 500
3:15

6. 244 I
Capt. W.F. DuFault ✓
S/S K.E. Vorse ✓ 500
3:15

FLIGHT II

1. 507 Q 300
Lt. D.B. Grunig ✓ 3:35
Lt. B.O. Morris ✓
Sgt H.J. Nowosielski ✓

2. 223 B 210
Lt. E.G. Bishop ✓ 3:35
Sgt L.W. Hudmitt ✓

3. 215 R-1 500
Lt. W.D. Chitty ✓ 3:30
Sgt V.B. Raccio ✓

4. 416 O 600
Lt. M. Errotabere ✓ 3:35
Sgt T.R. Lynch ✓

5. 307 N 585
Lt. A.R. Turman ✓ 3:20
S/S C.D. Harmon ✓

6. 334 G 615
Lt. R. Ford ✓ 3:35
Cpl G.J. Thompson ✓

FLIGHT III

1. 523 N-1 550
Capt. H.M. Evans ✓ 3:20
Lt. T.M. McCartney ✓
S/S G.L. Skeens ✓

2. 985 D 525
Lt. J.H. Montross ✓ 3:20
S/S J.W. Finkel ✓

3. 325 L 489
Lt. W.L. Hale ✓ 3:20
S/S D.H. Bentzler ✓

4. 213 A 550
Lt. T.E. McCready ✓ 3:20
S/S W.E. Lemonds ✓

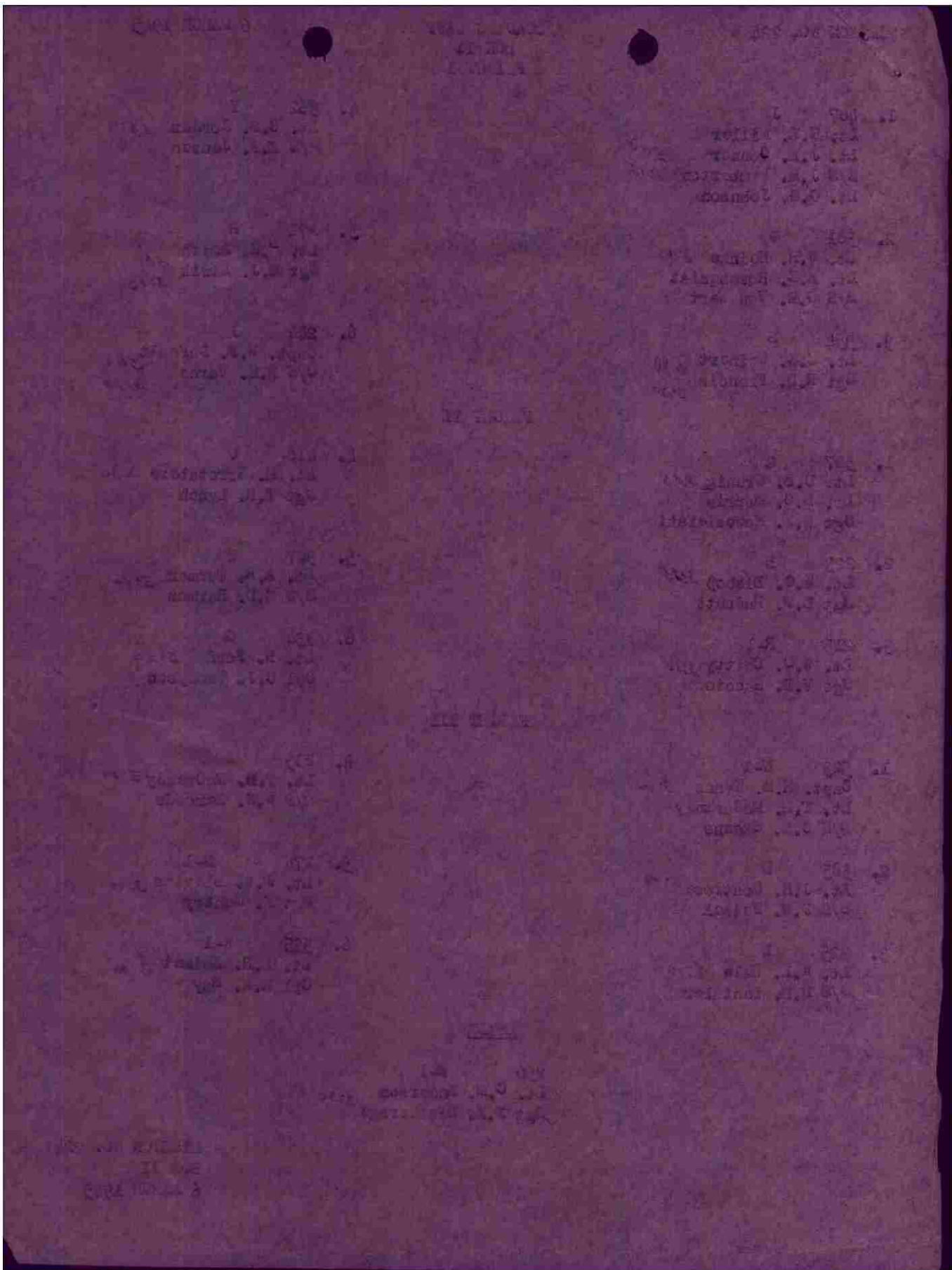
5. 274 S-1 500
Lt. J.W. Blevins ✓ 3:20
Sgt F. Gentry ✓

6. 335 W-1 650
Lt. L.R. Zeimet ✓ 3:20
Cpl R.K. Ray ✓

SPARE

250 W-1 475
Lt. C.M. Anderson ✓ 3:30
Sgt J.A. Deatherage ✓

MISSION NO. 224
BOX II
6 MARCH 1945



SECRET
AUTH: CO, A-39
9 Mar 45
INITIAL
E-2

HEADQUARTERS
416TH BOMBARDMENT GROUP (L)
Office of the Commanding Officer

AFPO 140, U.S. Army,
9 March 1945.

SUBJECT: Mission Report.

TO : Commanding General, 9th Bombardment Division (M), AFPO 140, U.S. Army.
(Attn: A-4)

- I. 6 March 1945, T.O. 1419, Opladen /Y, F.O. 193-779.
- II. None.
- III. None.

IV. 43-22313
(Capt A.C. Sears)

Two bombs released prematurely when bomb door opened at T.P.

Investigation revealed that a piece of chaff had blown into the aft salvo relay box. The piece of chaff was burned indicating that it had shorted out the bombing circuit upon opening the bomb doors. Aircraft to be test flown with practice bombs to complete and substantiate the above findings.

43-22354
(Lt C.E. Wainert)

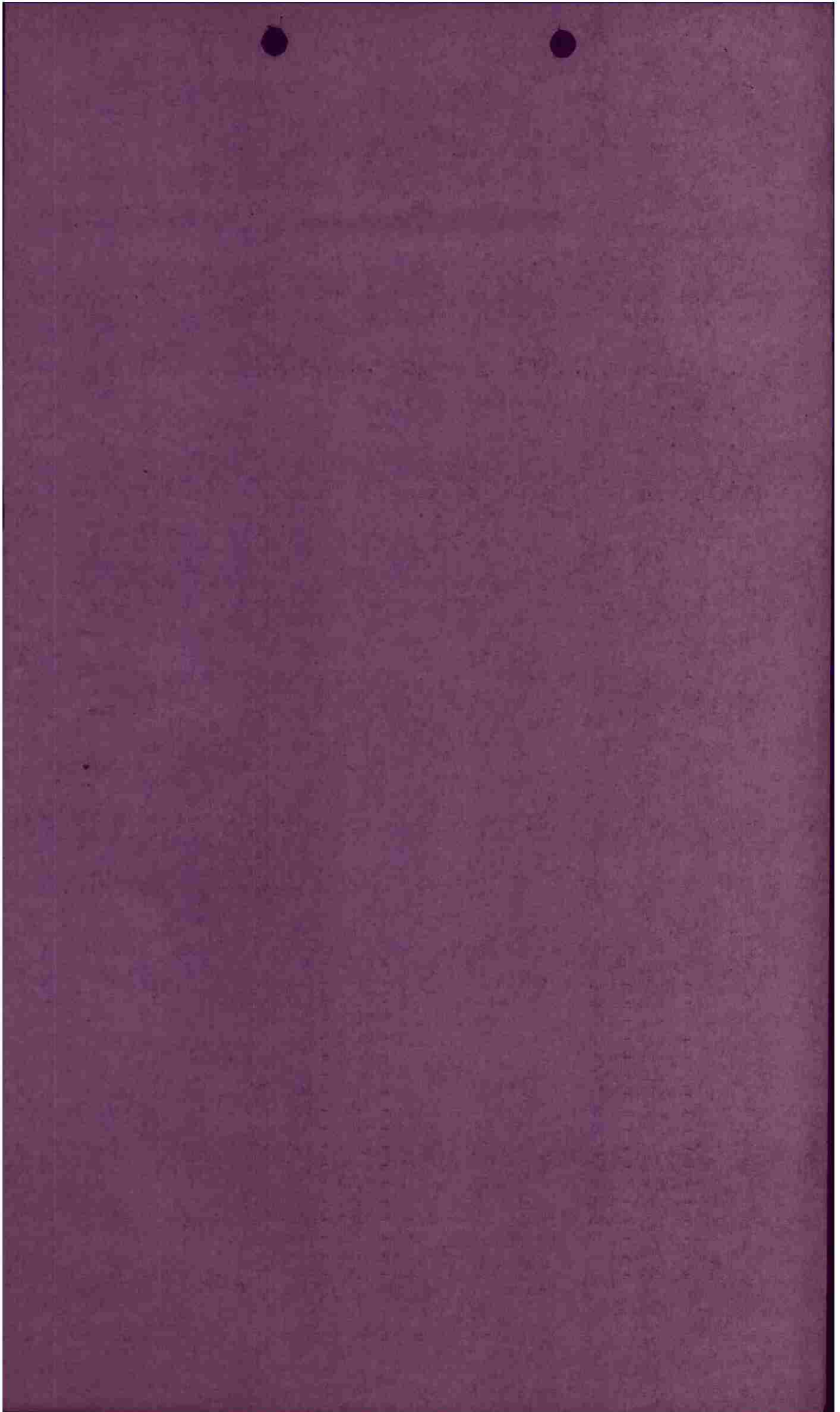
Two bombs returned.

Two bombs were clustered on station 4A as a test drop for clustered 500lb bombs. Investigation revealed that the cluster adapters were binding against the bomb shackles carrying hooks preventing free rotation upon release of A-4 release unit. It is believed that 500lb bombs exert too much pressure on the shackle carrying hooks from the cluster adapter to allow the carrying hooks to open freely.

V. None.

- VI. 1 - 3:20 - 490
- 2 - 3:20 - 580
- 3 - 3:20 - 420
- 4 - 3:20 - 525
- 5 - 3:20 - 575
- 6 - 3:15 - 600
- 7 - 3:25 - 450
- 8 - 3:15 - 450
- 9 - 3:15 - 435
- 10 - 3:15 - 660
- 11 - 3:40 - 550
- 12 - 4:00 - 650
- 13 - 3:25 - 500
- 14 - 3:15 - 650
- 15 - 3:25 - 575
- 16 - 3:25 - 600
- 17 - 3:25 - 410
- 18 - 3:25 - 630

- 1 - 3:15 - 500
- 2 - 3:15 - 495
- 3 - 3:20 - 580
- 4 - 3:15 - 550
- 5 - 3:15 - 500
- 6 - 3:15 - 560
- 7 - 3:25 - 600
- 8 - 3:35 - 520
- 9 - 3:10 - 500
- 10 - 3:35 - 625
- 11 - 3:30 - 585
- 12 - 3:35 - 635
- 13 - 3:20 - 550
- 14 - 3:20 - 525
- 15 - 3:20 - 480
- 16 - 3:20 - 550
- 17 - 3:20 - 500
- 18 - 3:20 - 650

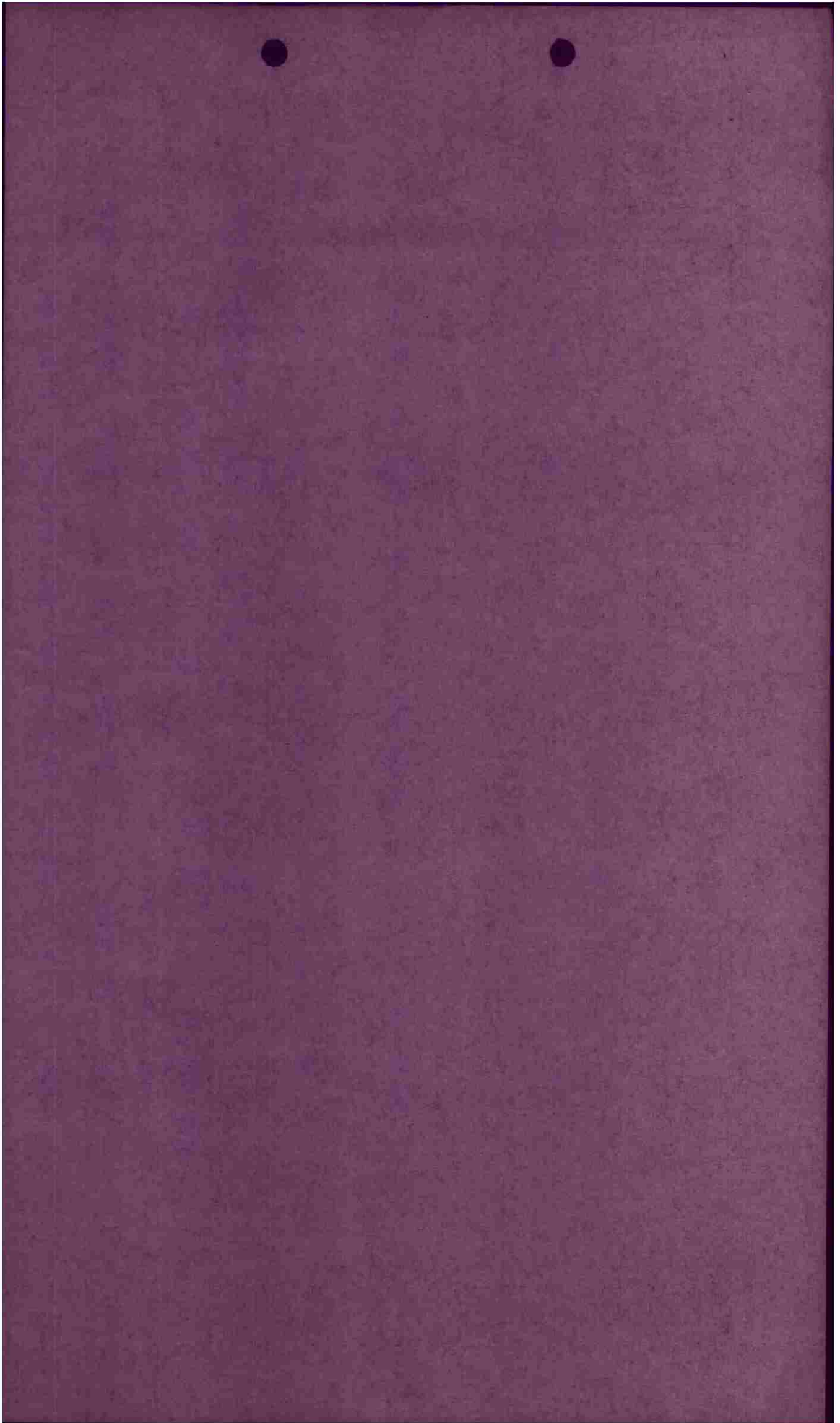


VI. Cont'd

W - 2:50 - 480
W - 2:50 - 545
W - 2:45 - 635
S - 3:30 - 475

VII. None

HAROLD A. BABETSKY,
Lt Colonel, Air Corps,
Commanding.



PRIORITY

FROM: 416TH BOMB GROUP (L)

TO : C.O. 1ST PROVISIONAL PATHFINDER SQUADRON
9TH BOMBARDMENT DIVISION (M)
97TH COMBAT BOMBARDMENT WING (L)

INFORMATION COPY
INFORMATION COPY

416BG R _____ E

CONFIDENTIAL

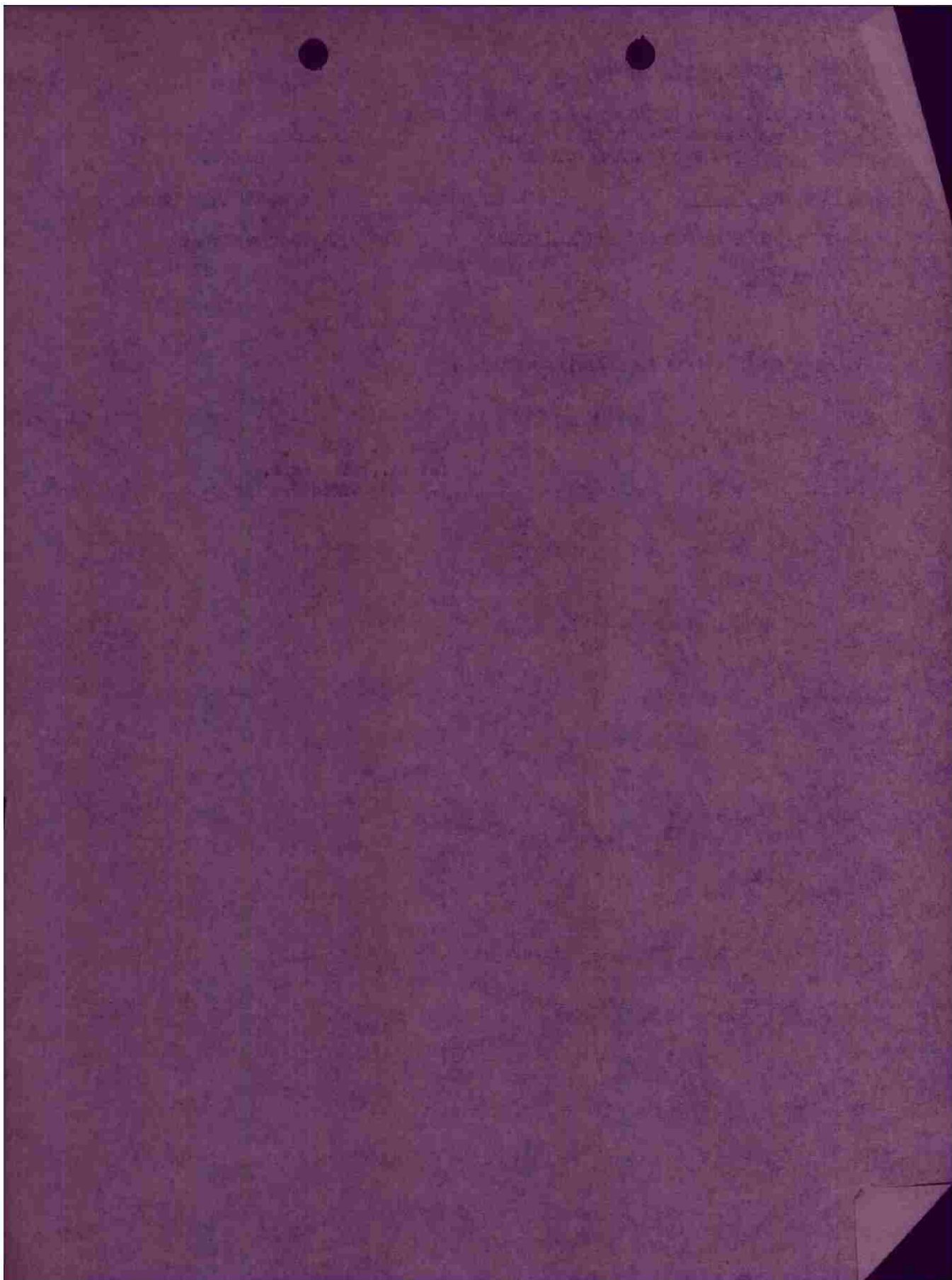
6 MARCH 1945 (2230)

PATHFINDER LEAD FOR OPERATIONAL MISSION ON 6 MARCH 1945 SATISFACTORY
PERIOD END.

AYLES ORTH COBORER 416

I certify that this is official business.

ELDON B. KRSH,
1st Lt., Air Corps,
B-3 Duty Officer

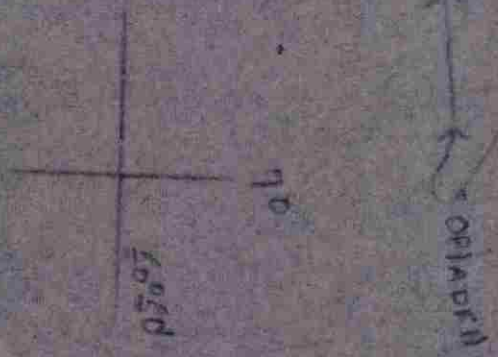


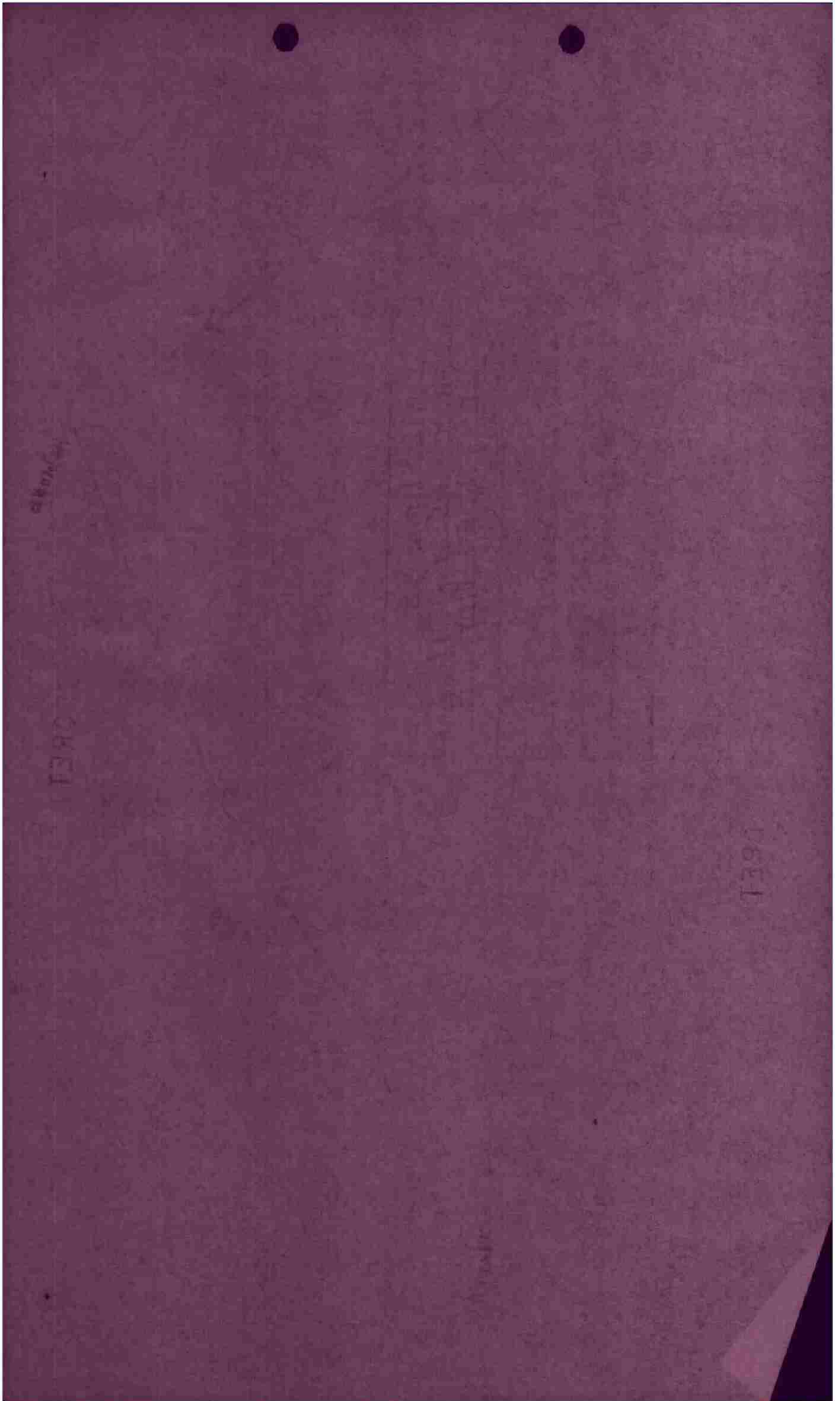
Helmond

SECRET

415 th ENGINEER
MARCH 1946 F.O.# 193-719
LAURET DELADEN NY
FOI 11/16
AIR 12410
Walter A. Flawn
WESTMID - John L. J. J. J.
McCarthy Database
Records of 11/16

SECRET

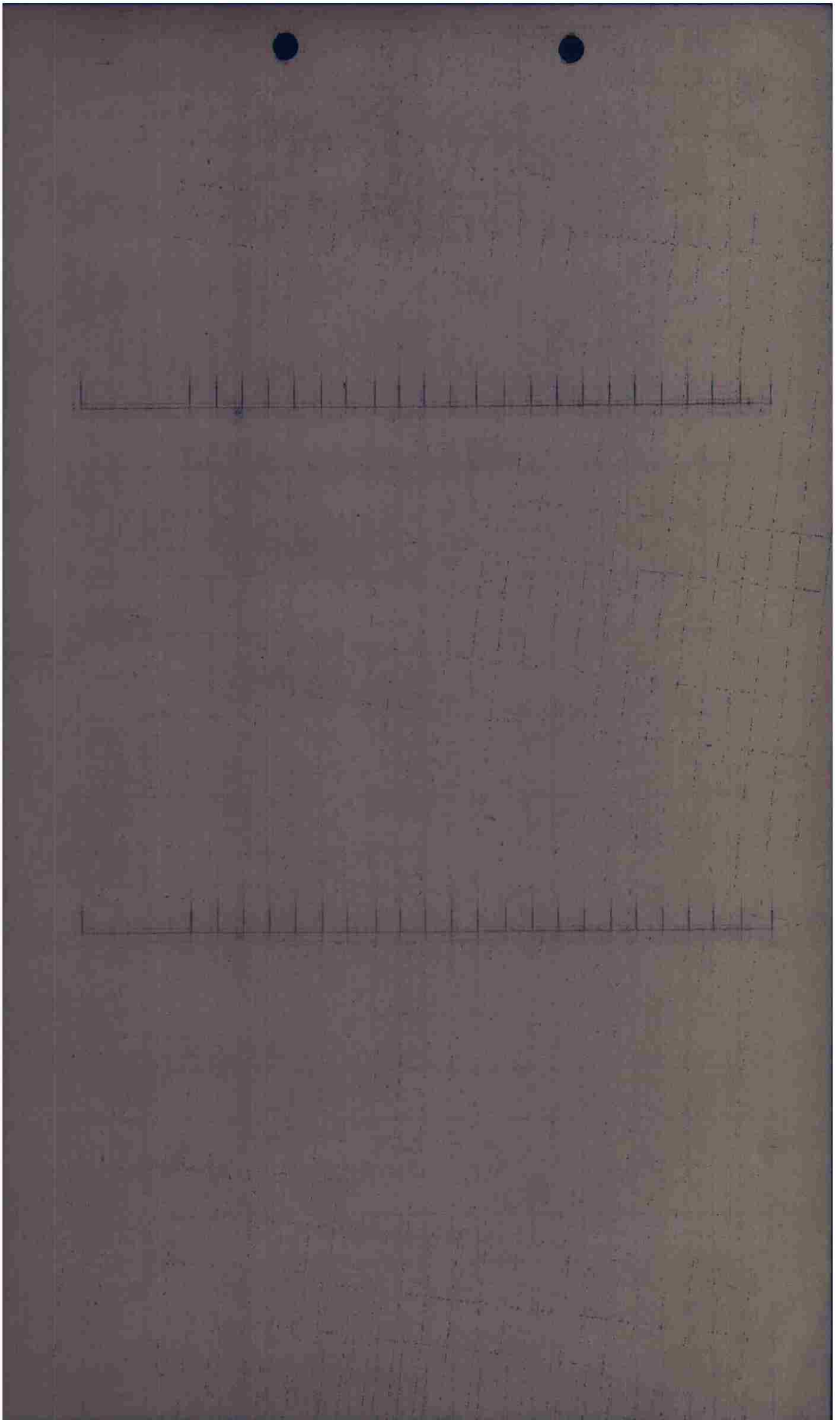




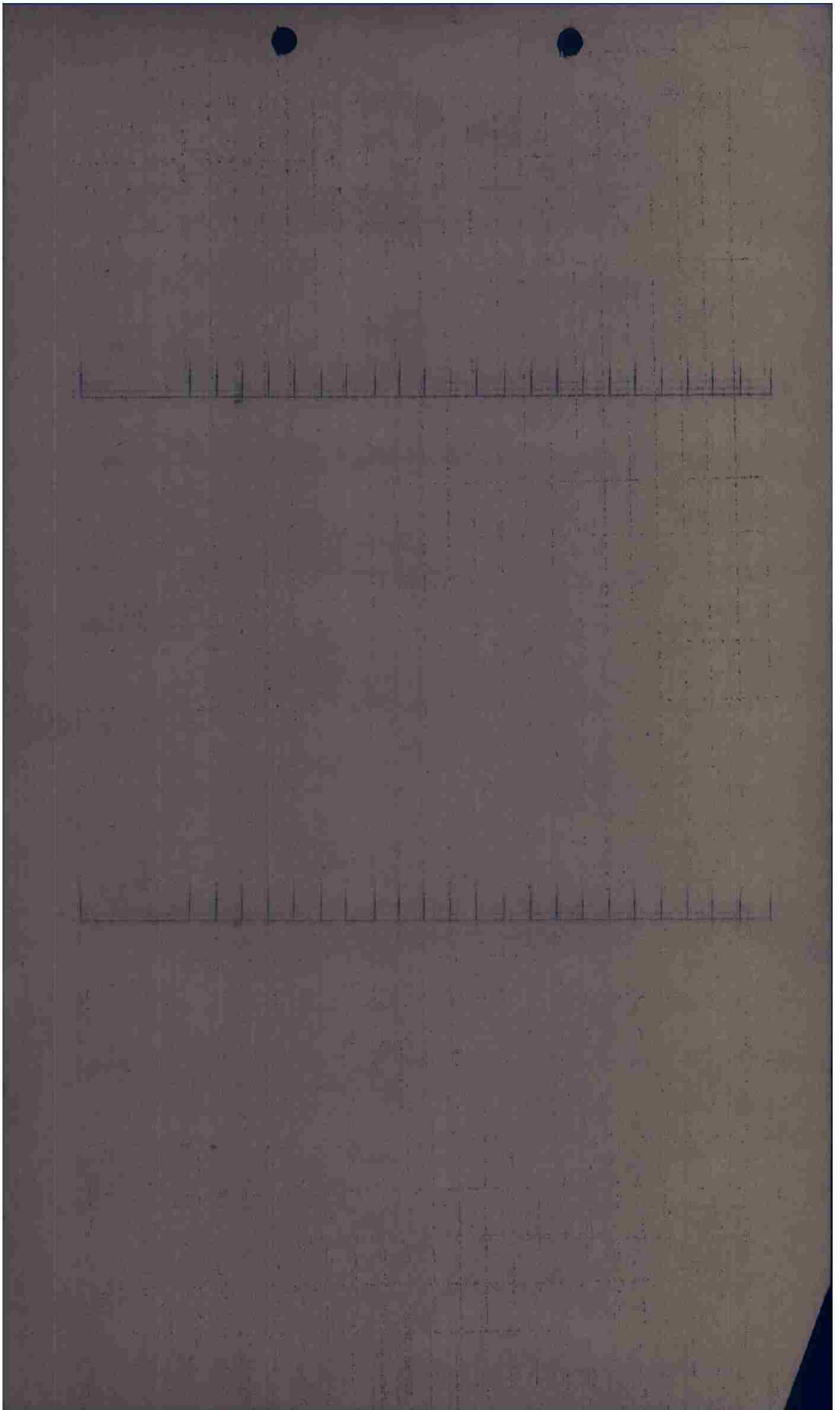
Mission No. 224

Box I.

S R D N	A / C LTR	A / C NO.	PILOT	D I S T A N C E	TARGET	A T O	ENG. COAST OUT	ENEMY COAST IN	T O T	ENEMY COAST OUT	ENG. COAST IN	C A M E R A	F U L L O L D A D	B O M B O A D	E N D U R	L A T I T U D I N E	R E M A R K S
B	N	521	Majors			1419										1738	
A	Z	508	Mical			1419										1739	
B	H	314	Martin			1419										1739	
B	L	344	Jensen, D.O.			1420										1739	
B	Q	381	Jensen			1420										1740	
B	G	263	Jensen			1420										1542	
B	R	498	Jensen			1421										1743	
B	B	313	Jensen			1421										1734	
B	C-1	356	Jensen			1421										1734	
B	N-1	239	Jensen			1422										1735	
B	F	249	Jensen			1422										1802	
B	D	237	Jensen			1422										1818	
B	G-1	499	Jensen			1423										1945	
B	K	300	Jensen			1423										1735	
B	Z-1	419	Jensen			1423										1746	
B	M	209	Jensen			1424										1735	
B	P	332	Jensen			1424										1747	
B	T	297	Jensen			1424										1746	
B	E	224	Jensen			1425										1740	



S Q D N	A / C LTR	A / C NO.	PILOT	D I S T A N C E	T A R G E T	A T O	E N G . C O A S T O U T	E N E M Y C O A S T I N	T O T	E N E M Y C O A S T O U T	E N G . C O A S T I N	C A M E R A	F U L L O L D	B O M B A D	E N D U R	L A T I T U D E	R E M A R K S
B	J	489	Miller, E. S.			1431										1742	
C	W	501	Reinke			1431										1743	
B	S	354	Minnert			1431										1744	
B	Y	362	Jordan			1432										1743	
B	R	271	Jawitt			1432										1744	
B	I	244	Bay Fault			1432										1747	
C	O	507	Burmy			1433										1804	
C	D	223	Bishop			1433										1806	
C	R-1	215	Clitty			1433										1741	
C	D	416	Burkholder			1434										1805	
C	N	307	Jerman			1434										1752	
C	G	334	Fred			1434										1753	
A	N-1	523	Ernest			1435										1754	
A	O	385	Montrose			1435										1755	
A	K	325	Kyle			1435										1754	
A	A	213	McCreedy			1436										1754	
A	S-1	274	Blowers			1436										1754	
A	W-1	335	Quinn			1436										1754	
A	A	250	Anderson, C. M.			1437										1726	
D	X	490	Alford			1437										1726	
D	X	490	Fukovich			1439										1726	
A	I	264	Kurt			1439										1726	
C	M	205	Baranaky			1438										1726	



EDM JIT JES JCO JKI V JEA JEA 03/06 OP OP
T (JEA) JES JJF

FROM 97TH COMBAT BOMB WING (L) 06/0100A
TO COMBOMB DIV NINE
COBOMGP 409
COBOMGP 410
COBOMGP 416
1ST PROV. PATHFINDER SQD.

OPERATIONAL PRIORITY BT
SECRET SENT IN CLEAR AUTH. LT. COL. MC AFEE

R-59-E

97TH COMBAT BOMB WING (L)
A P O 140
06 MARCH 1945

FIELD ORDER NO. 193-779

MAPS: NORMAL

1. B. (1) REF. CURRENT BOMBLINE
(2) THE 2 T.A.F. WILL FURNISH CLOSE ESCORT FOR THE 409TH BOMB GROUP. THE XIX T.A.C. WILL FURNISH AREA COVER FOR THE 410TH AND 416TH BOMB GROUPS.

2. THIS WING WILL ATTACK TARGETS IN GERMANY

ZERO HOUR PLAN "A" 06/1100A
ZERO HOUR PLAN "B" 06/1100A

PLAN "A"

3. A. 409TH BOMB GROUP
 - (1) RECKLINGHAUSEN M/Y A-645336
 - (2) MAXIMUM EFFORT BOMBING BY FLIGHTS OF 6
 - (3) WITH FIGHTERS AT E-5522 AT 12,000 FEET AT ZERO HOUR PLUS 10 MINUTES.
 - (4) BASE TO FIGHTER RENDEZVOUS TO E-9143 TO A-2383 TO A-5287 TO A-6889 TO I.P. TO TARGET.
 - (5) TARGET TURN LEFT TO R.P. AND RETRACE ROUTE TO BASE
 - (6) BOMB 12,500 FEET OR BELOW CLOUDS DOWN TO BUT NOT BELOW 8,000 FEET. LOSE 1,000 FEET AFTER RELEASING BOMBS.
 - (7) A-7954
 - (8) GENERALLY NORTHEAST TO SOUTHWEST
 - (9) M.P.I. ILL. 6(D) (1) 14/4. COVER M/Y BETWEEN REF. 030058 AND REF. 060057. INTERVALOMETER SETTING 50 FEET.
 - (10) 6 X 500 LB. G.P. FUSED 1/10 SECOND NOSE 1/100 SECOND TAIL.
 - (11) A-7954
 - (12) IN THE EVENT PRIMARY TARGET CANNOT BE BOMBED BY VISUAL MEANS OR GEE, AN ALTERNATE TARGET IN ACCORDANCE WITH IX BOMB. DIV. CIPHER F-576-E (2-9-45) WILL BE ATTACKED.
 - (13) EXTREME CAUTION WILL BE EXERCISED THAT ALTERNATE TARGETS WITHIN 5 MILES OF P/W CAMPS WILL NOT BE SELECTED.
 - (14) FLIGHT LEADERS WILL FIRE YELLOW FLARES AT FIGHTER RENDEZVOUS POINT AND WILL DO AFTER THAT WHENEVER FIGHTER LEADER REQUEST THEM.

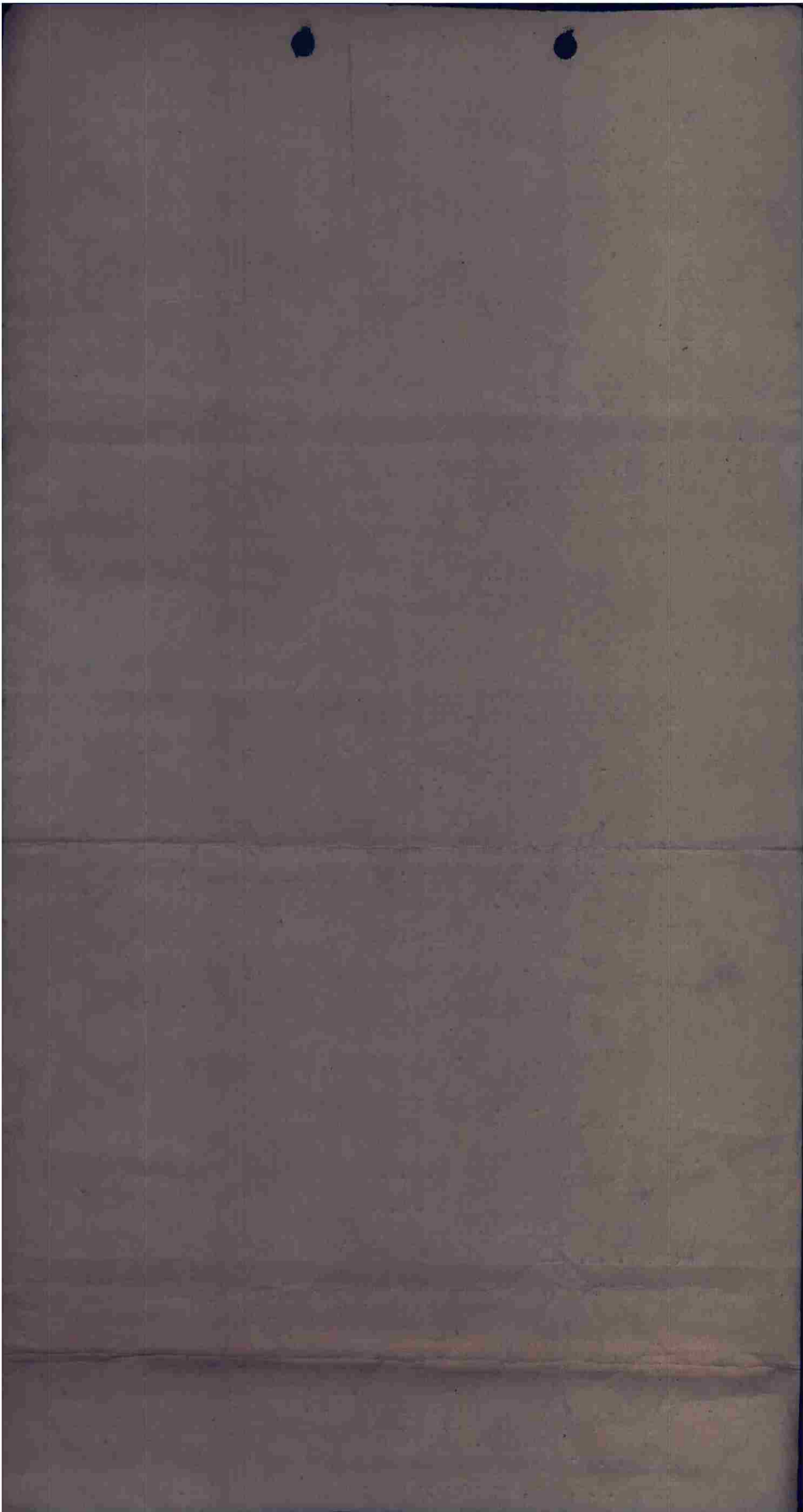
- B. 410TH BOMB GROUP
 - (10) 6 X 500 LB. GP. FUSED 1/10 SECOND NOSE 1/100 SECOND TAIL.
 - (12) T.O.T. ZERO HOUR

- C. 416TH BOMB GROUP
 - (10) 6 FLIGHTS 6 X 500 LB. G.P. FUSED 1/10 SECOND NOSE 1/100 SECOND TAIL.
3 FLIGHTS 4 X 1000 LB. G.P. FUSED 1/10 SECOND NOSE 1/100 SECOND TAIL.
INTERVALOMETER SETTING 50 FEET.
 - (12) T.O.T. ZERO HOUR PLUS 20 MINUTES.

- K. (1) TO (4) NO CHANGE.

"FOR 410TH AND 416TH GROUPS ONLY"

- (5) TARGET: OPLADEN M/Y F-493744
- (6) A/C REQUIRED: MAXIMUM EFFORT BOMBING BY FLIGHTS OF 6.
- (7) ROUTE OUT: BASE TO K-8343 TO I.P. TO TARGET.
- (8) ROUTE BACK: TARGET TURN LEFT TO R.P. AND RETRACE ROUTE TO BASE.
- (9) ALTITUDES: BOMB 12,500 FEET OR BELOW CLOUDS DOWN TO BUT NOT BELOW 8,000 FEET. LOSE 1,000 FEET AFTER RELEASING BOMBS.
- (10) I.P. F-2671
- (11) AXIS OF ATTACK: GENERALLY WEST TO EAST
- (12) M.P.I. ILL. 6(D)(1) 11/6 COVER M/Y BETWEEN REF. 040062 AND REF. 051237



- (15) R.P. F-2671
 (14) PRIMARY TARGET WILL BE BOMBED BY VISUAL MEANS ONLY. IF PRIMARY TARGET CANNOT BE BOMBED VISUALLY AN ALTERNATE TARGET IN ACCORDANCE WITH IX BOMB. DIV. CIPHER F-576-E (2-9-45) WILL BE ATTACKED.
 (15) EXTREME CAUTION WILL BE EXERCISED THAT ALTERNATE TARGETS WITHIN 5 MILES OF P/W CAMPS WILL NOT BE SELECTED.

PLAN "B"

3. A. 409TH BOMB GROUP

- (1) RECKLINGHAUSEN M/Y. A-645336
 (2) 2 BOXES OF 18 A/C BOMBING ON ONE P.P.F. A/C
 (3) WITH FIGHTERS AT E-5522 AT 12,000 FEET AT ZERO HOUR PLUS 26 MINUTES.
 (4) BASE TO FIGHTER RENDEZVOUS TO E-9143 TO A-2078 TO A-2393 TO A-5293 TO TARGET.
 (5) TARGET TURN LEFT TO A-7954 TO A-6880 TO A-2078 AND RETRACE ROUTE TO BASE.
 (6) BOMB 12,500 FEET. MINIMUM ALTITUDE FOR VISUAL BOMBING 8,000 FEET.
 (9) M.P.I. ILL. 6(D)(1) 14/4. COVER M/Y BETWEEN REF. 030058 AND REF. 060057, TO BE USED IF BOMBING IS VISUAL BY FLIGHTS OR BOXES.
 P.P.F. M.P.I. GSGS 4414 SHEET NO. 4309. GRID. COORD. 64953355 INTERVALOMETER SETTING 50 FEET.
 (10) 6 X 500 LB. G.P. FUSED 1/10 SECOND NOSE 1/100 SECOND TAIL.
 (12) T.O.T. ZERO HOUR PLUS 40 MINUTES.
 (13) IF VISUAL CONDITIONS EXIST AT PRIMARY TARGET BOMBING WILL BE BY VISUAL MEANS. THE DECISION TO BOMB VISUALLY WILL BE THE RESPONSIBILITY OF THE A-26 BOX LEADERS AND THEY WILL DO

SO WHETHER THEY CAN CONTACT THE P.P.F. A/C OR NOT. IF BOMBING IS VISUAL GROUP WILL BOMB BY (A) FLIGHTS (B) BOXES AND USE A-7954 AS A VISUAL I.P. IF VISUAL CONDITIONS DO NOT EXIST, GROUP WILL BOMB PRIMARY TARGET IN THE FOLLOWING PRIORITY :

- (A) P.P.F.
 (B) GROUP "GEL"
 (14) AN ALTERNATE TARGET IN ACCORDANCE WITH IX BOMB. DIV. CIPHER F-576-E (2-9-45) WILL BE ATTACKED.
 (15) EXTREME CAUTION WILL BE EXERCISED THAT ALTERNATE TARGETS WITHIN 5 MILES OF P/W CAMPS WILL NOT BE SELECTED.
 (16) FLIGHT LEADERS WILL FIRE YELLOW FLARES AT FIGHTER RNDV. POINT AND WILL DO AFTER THAT WHENEVER FIGHTER LEADER REQUEST THEM.

B. 410TH BOMB GROUP

- (9) P.P.F. M.P.I. G.S.G.S. 4414 SHEET NO. 4908
 GRID. COORD. 49107420
 (12) T.O.T. ZERO HOUR PLUS 60 MIN.

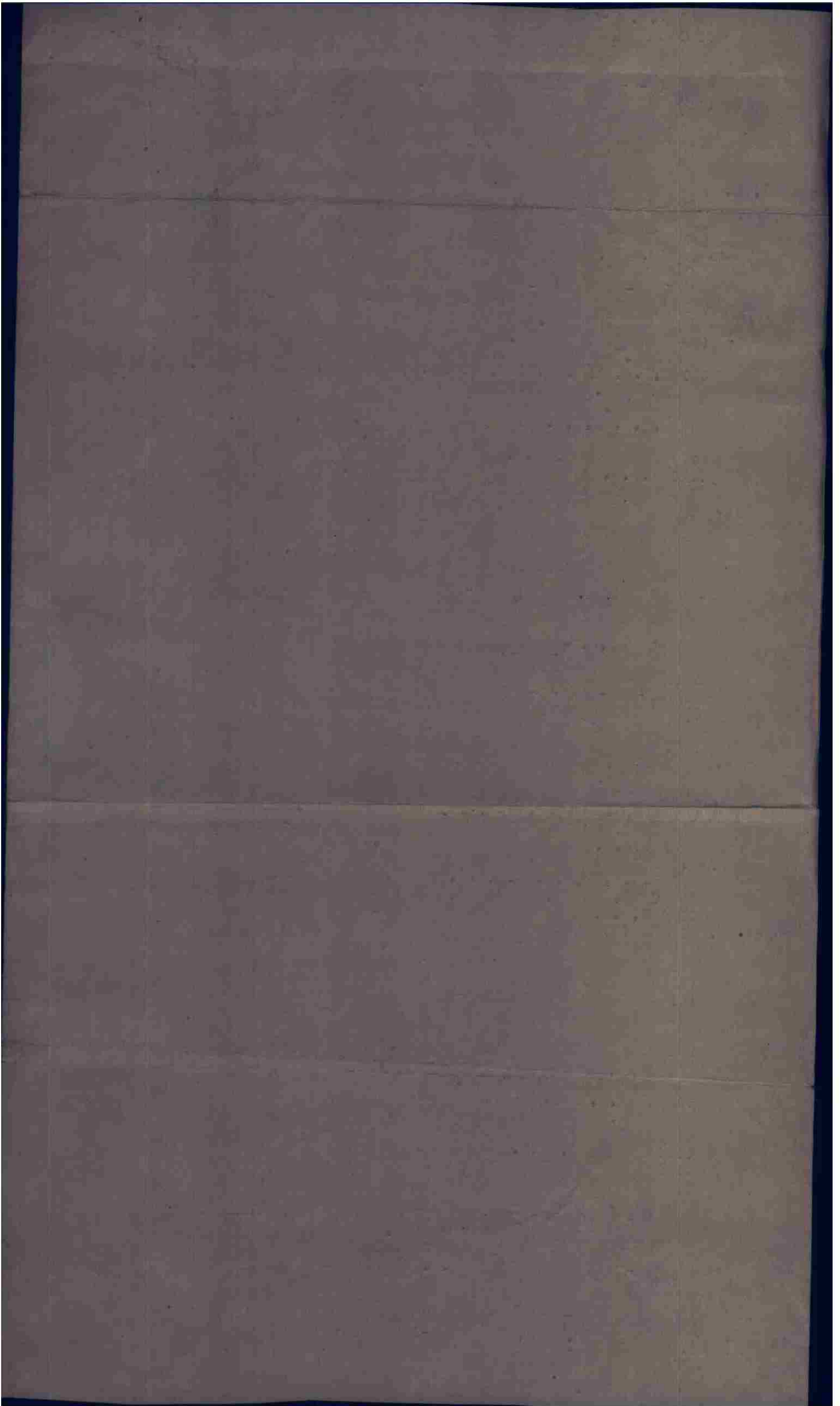
3. C. 416TH BOMB GROUP

- (9) P.P.F. M.P.I. G.S.G.S. 4414 SHEET NO 4908
 GRID. COORD. 49137385. INTARVALOMETER SETTING 50 FEET.
 (12) T.O.T. ZERO HOUR PLUS 50 MIN.

• X. (1) TO (4) NO CHANGE

FOR 409TH AND 416TH GROUPS ONLY.

- (5) TARGET: OPLADEN M/Y F-493744
 (6) A/C REQ: 2 BOXES OF 18 BOMBING ON ONE PPF A/C
 (7) ROUTE OUT: BASE TO E-5522 TO E-9905 TO TARGET
 (8) ROUTE BACK: TARGET TURN RIGHT TO F-2671 TO BASE
 (9) ALTITUDES: BOMB 12,500 FEET. MINIMUM ALTITUDE FOR VISUAL BOMBING 8000 FEET. LOSE 1000 FEET AFTER RELEASING BOMBS.
 (10) M.P.I. ILL. 6(D) (1) 11/6 COVER M/Y BETWEEN REF. 048068 AND REF 051037. TO BE USED IF BOMBING IS VISUAL BY FLIGHTS OR BOXES.
 (11) 6X500 LB. G.P. FUSED 1/10 SEC NOSE 1/100 SEC TAIL.
 (12) IF VISUAL CONDITIONS EXIST AT PRIMARY TARGET BOMBING WILL BE BY VISUAL MEANS. THE DECISION TO BOMB VISUALLY WILL BE THE RESPONSIBILITY OF THE A-26 AND A-26 BOX LEADERS AND THEY WILL DO SO WHETHER THEY CAN CONTACT THE PPF A/C OR NOT. IF BOMBING IS VISUAL GROUPS WILL BOMB BY (A) FLIGHTS (B) BOXES AND USE F-2671 AS A VISUAL I.P. IF VISUAL CONDITIONS DO NOT EXIST AND PPF EQUIPMENT FAILS GROUPS WILL ATTACK AN ALTERNATE TARGET IN ACCORDANCE WITH IX BOMB. DIV. CIPHER F-576 E (2-9-45)
 (13) EXTREME CAUTION WILL BE EXERCISED THAT ALTERNATE TARGETS WITHIN 5 MILES OF P/W. CAMPS WILL NOT BE SELECTED



4. NO CHANGE

5. COMMUNICATIONS

A. 409TH BOMB GROUP (645336)
(2) TABLESPOON
(4) ROSELEE

B. 410TH BOMB GROUP (493726)
(2) PROCTOR
(3) JUDITH
(4) ROSELEE

C. 416TH BOMB GROUP (493726)
(2) CORNHILL
(3) JUDITH
(4) ROSELEE

X. GENERAL INFORMATION

(11) PROCTOR AND CORNHILL LEADERS CALL STONEWALL ON "C"
15 MINUTES PRIOR TO REACHING TROOPLINE ADVISING HOW MUCH
EARLY OR LATE. NOT NECESSARY TO CALL WHEN LEAVING TARGET
AREA.

COMCBTWIG 97

BT 06/0020A

AR SM/HMB

JEDM R.....06/0230A

DB HXX

JES R.....06/0230A

JMB AR

JPO R.....06/0230A

HGF AR

JKI R.....06/0230A

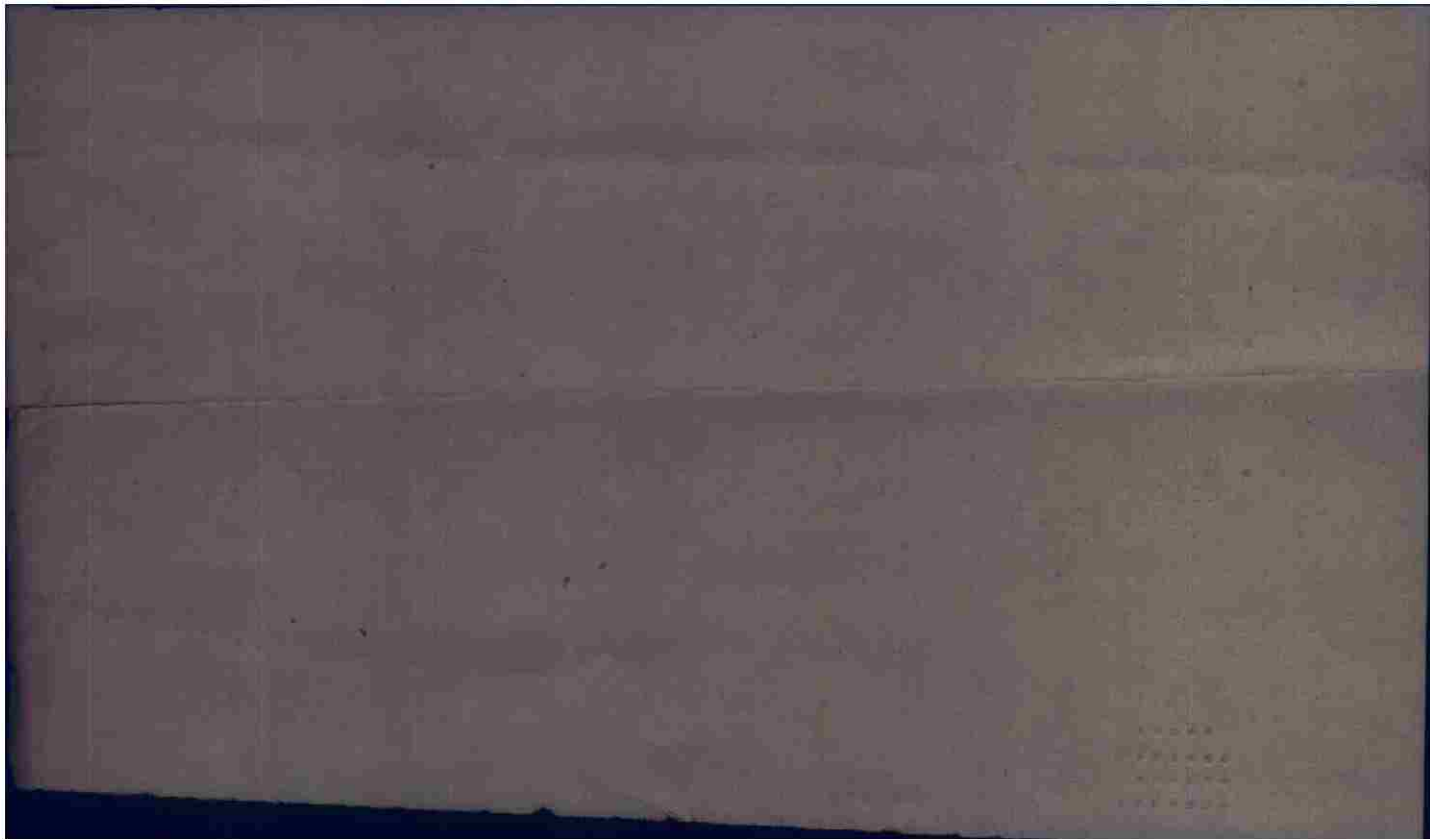
WJF

B

B

TO JEDM AND JEA

THIS PAGE DECLASSIFIED IAW EO12958



THIS PAGE DECLASSIFIED IAW EO12958

JEDM JJF JES JPO JKI V JEA JEA 05/06 OP OF
T (JEDM PASS TO JJF)

241

FROM 97TH COMBAT BOMB WING (L) 06/0320A
TO COMBOMDIV NINE
1ST PROV. PATHFINDER SQD.
409 COBOMGP
410TH COBOMGP
416TH COBOMGP

Dist
5-2
5-3
519

OPERATIONAL PRIORITY BT
SECRET SENT IN THE CLEAR AUTH. LT. COL. MC ATEE

97TH COMBAT BOMB WING (L)
A P O 140
06 MARCH 1945

ANNEX NO. 1 TO FIELD ORDER NO. 193-779 R-61-E

IN PLAN "A" ADD PARA. 3. X. (16)
FRIENDLY ARTILLERY WILL ATTEMPT TO NEUTRALIZE
ENEMY FLAK BATTERIES WITHIN RANGE.
CHANGE PARA. 3. C. (10) TO READ:
6 X 500 LB. G.P. FUSED 1/10 SECOND NOSE 1/100 SECOND TAIL
INTERVALOMETER SETTING 50 FEET.

IN PLAN "B" PARA. 3. X. SHOULD READ:
"FOR 410TH AND 416TH GROUPS ONLY"

ADD TO PARA. 3. A. (6) LOSE 1,000 FEET AFTER RELEASING BOMBS.

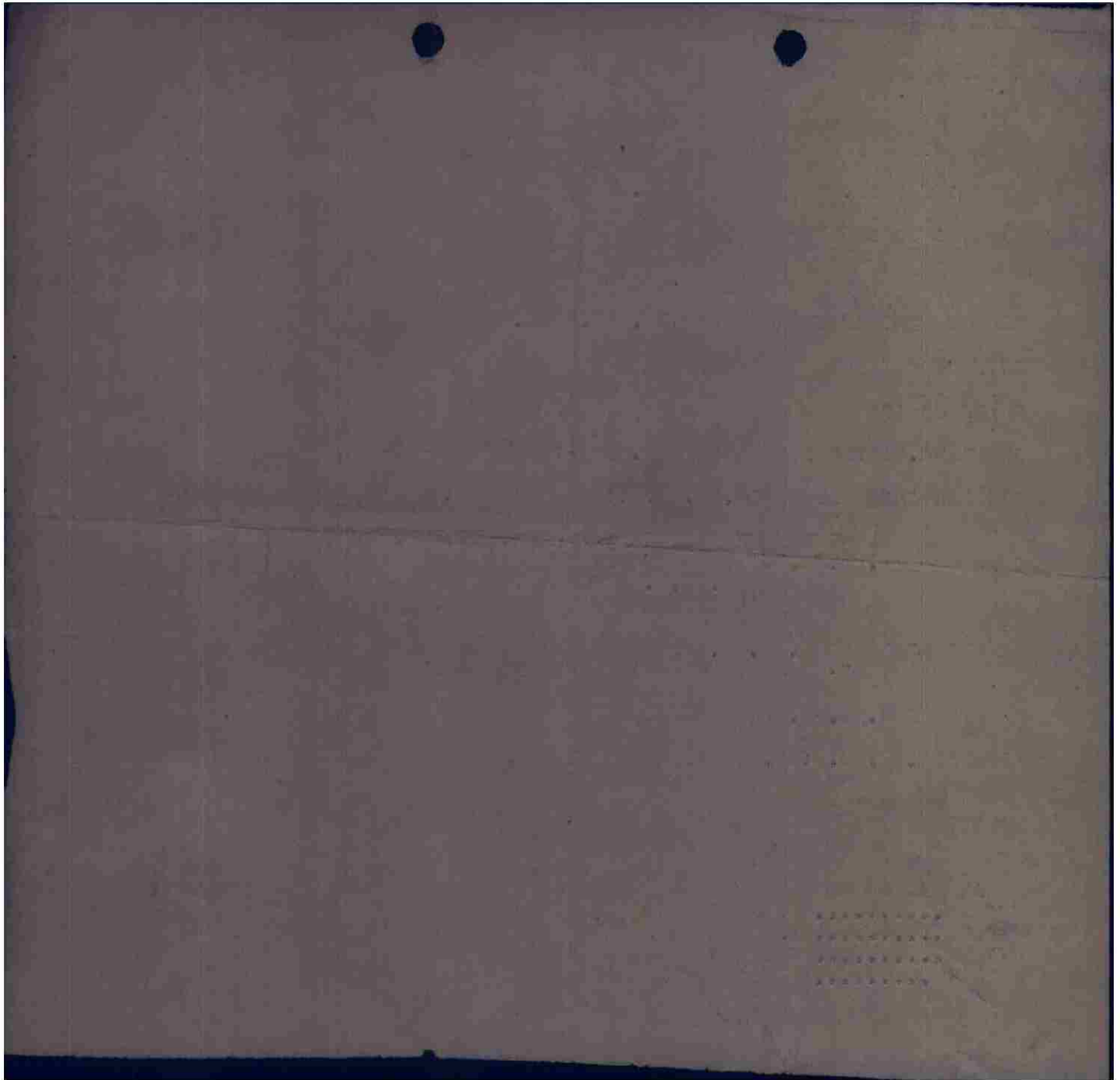
ADD PARA. 3. X. (14) FRIENDLY ARTILLERY WILL ATTEMPT TO NEUTRALIZE
ENEMY FLAK BATTERIES WITHIN RANGE.

COMCBTWIG 97

BT 06/0320A

SH AR
JES R06/0340A FR AR
JPO R06/0340A HP AR
JKI R06/0340A WJF AR
JEDM R06/0338AH HDD AR

THIS PAGE DECLASSIFIED IAW EO12958



THIS PAGE DECLASSIFIED IAW EO12958

*June
6/3/46
0130*

237

*Dyat
5-2
5-3
5-9*

JEDM JJF JPO JKI V JEA JEA 02/06 OP OP
T (JEDM PASS JJF)

FROM 97TH COMBAT BOMB WING (L) 06/0050A
TO COMBOMDIV NINE
1ST PROV. PATHFINDER SQD.
410TH BOMB GROUP
416TH BOMB GROUP

BT

SECRET SENT IN CLEAR AUTH. LT. COL. MC AFEE

INTELLIGENCE SUPPLEMENT NO. 1 FIELD ORDER NO. 193-779

(1) TARGET: OPLADEN M/Y WF-493744 GH-384.
PLAN "A" ILL. 6 (D) (I) 11/6 COVER AREA FROM 048069
TO 051037
PLAN "B" PPF M.P.I. FOR 410 GRID COORDINATE WF49107420
PPF M.P.I. FOR 416 GRID COORDINATE WF49137385
THE 410TH WILL ATTACK TWENTY MINUTES BEFORE THE 416TH

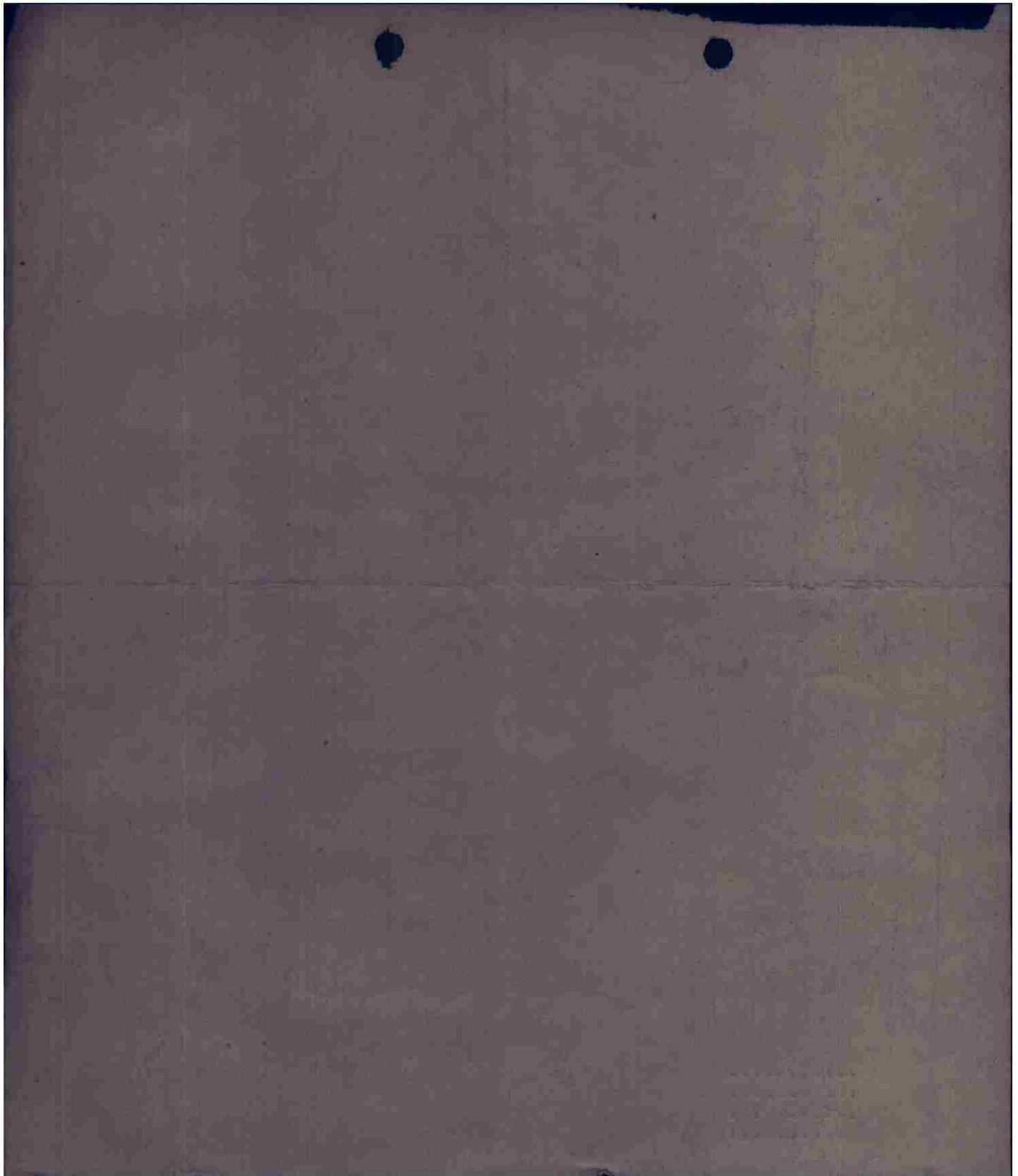
(2) PHOTO COVERAGE
IX TAG D/321 GIVES DAMAGE ASSESSMENT AS OF FEB 9.
6 (D) (I) 11/6, 11/5, 11/3, 11/4, 11/2
5106E/12
4 (C) 3/2
2 (B) 11A/10
US 7 PH GP AA 736 PRINT 7022, 7023, 7024

MAP COVERAGE
GSGS 4414 SHEET 4908
GSGS 4416 SHEET R-1

(3) SEE INFORMATION SHEET UNDER GH-384 FOR DESCRIPTION OF TARGET.
TARGET IS ABOUT TWO AND THREE QUARTERS MILES NORTH EAST OF BOMBLINE
WHICH IS THE RHINE RIVER. THE PURPOSE OF THE ATTACK IS TO DESTROY ANY
SUPPLIES IN THIS YARD, THUS PREVENTING THE USE OF MILITARY SUPPLIES,
OR THE SHIPMENT OF VITAL MATERIAL TO OTHER PARTS OF GERMANY. THERE
WILL BE COUNTER BATTERY FIRE. SEE FLAK INTELLIGENCE BULLETIN NO. 588
10 B/B AT 10,000 FEET ALONG RHINE BETWEEN COLOGNE AND DUSSELDORF, AND
ALSO COMMENT AS TO B/B AT BRIDGES AND FERRY CROSSINGS.

COMCBTWIG 97
BT 06/0050A
SH AR
JES R
JPO R06/0115A HGP AR
JKI R06/0115A WJF AR
JEDM R06PQ0IA NEH AR K

THIS PAGE DECLASSIFIED IAW EO12958



THIS PAGE DECLASSIFIED IAW EO12958

Handwritten: 6 March 0900

Handwritten: 246

HEDM JJF JES JPO JKI V JEA JEA 08/06 OP OP
T (JEDM PASS TO JJF)

FROM 97TH COMBAT BOMB WING 06/0745A
TO COMBOMDIV NINE
1ST PROV. PATHFINDER SQD.
409TH COBOMGP
410TH COBOMGP
416TH COBOMGP

OPERATIONAL PRIORITY BT
SECRET SENT IN THE CLEAR AUTH. LT. COL. MC AFEE

Handwritten: S-2
S-3
SIG

97TH COMBAT BOMB WING
A P O 140
06 MARCH 1945

ANNEX NO. 2 TO F.O. NO 193-779 R-63-E

CANCEL PLAN "A"

PLAN "B" IN EFFECT WITH ZERO HOUR TO READ 06/1400A

IN PLAN "B" HAVE PAR. 3. X.(4) TO READ : EMERGENCY SHORT FIELDS:

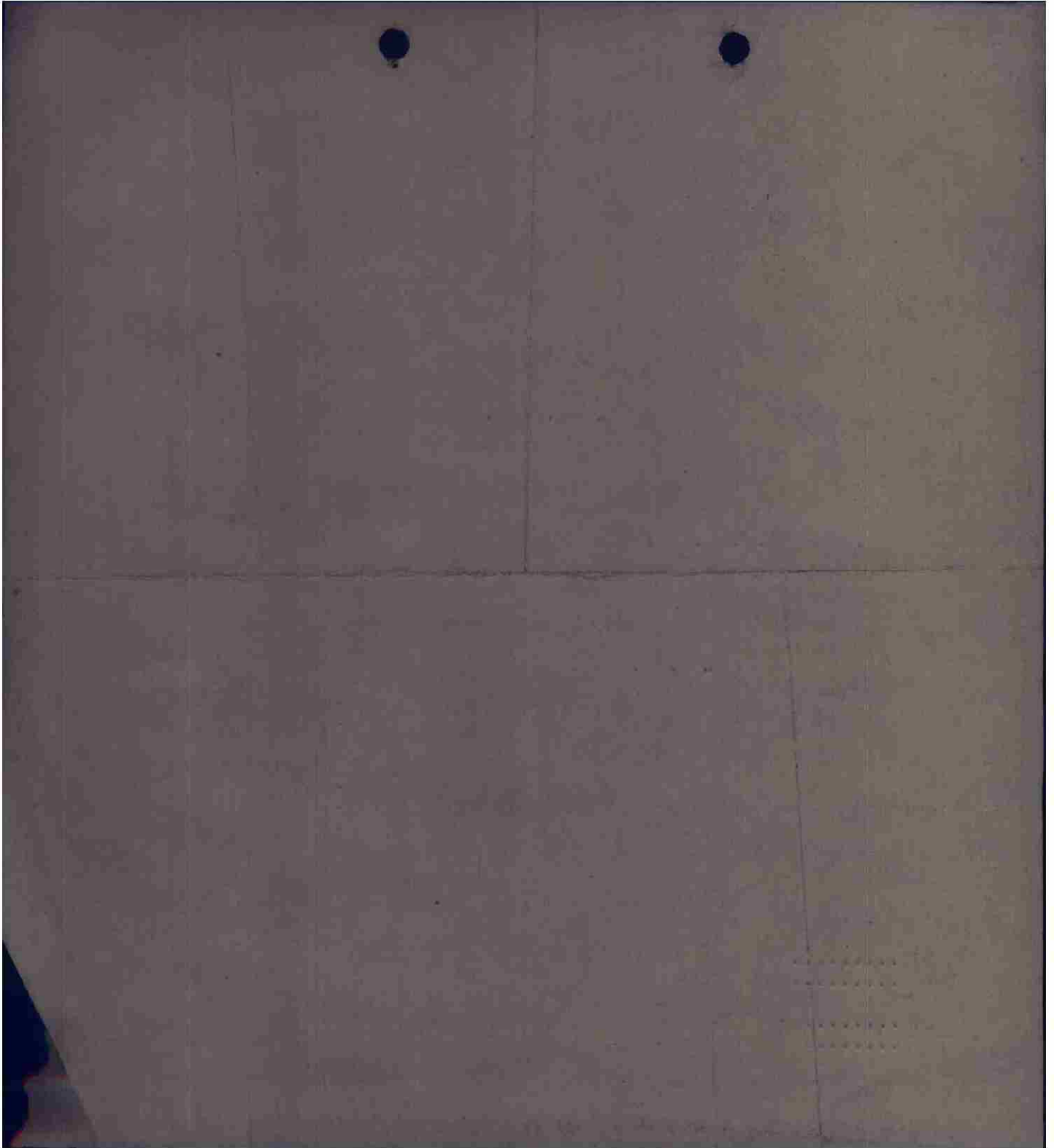
409TH: A-92
Y-32
A-78

410TH AND 416TH
A-78
Y-34
A-92

COMCTBWIG 97
BT 06/0745A
SH BB TO GPS

JES R.....06/0835A DJP KKK
JPO R.....06/0835A SL KK
CHECK TIME PLS CORRECT TIME 0800A
JKI R.....06/0800A JF KKK
ITA R.....

THIS PAGE DECLASSIFIED IAW EO12958



THIS PAGE DECLASSIFIED IAW EO12958

JEDM JES JKI JPO V JEA JEA 09/66 OP-OP

FROM: 97TH COMBAT BOMB WING 06/1145A
TO : COMBONDIV IX
409TH BOMB GROUP.
410TH BOMB GROUP.
416TH BOMB GROUP.
1ST PROV, PATHFINDER SQDN.

256

OPERATIONAL PRIORITY BT
SECRET SENT IN THE CLEAR AUTH:XX LT. COL. MC AFEE

97TH COMBAT BOMB WING
APO 148
06 MARCH XX 1965.

ANNEX NO. 3 TO FIELD ORDER NO. 193-779. R-64-E

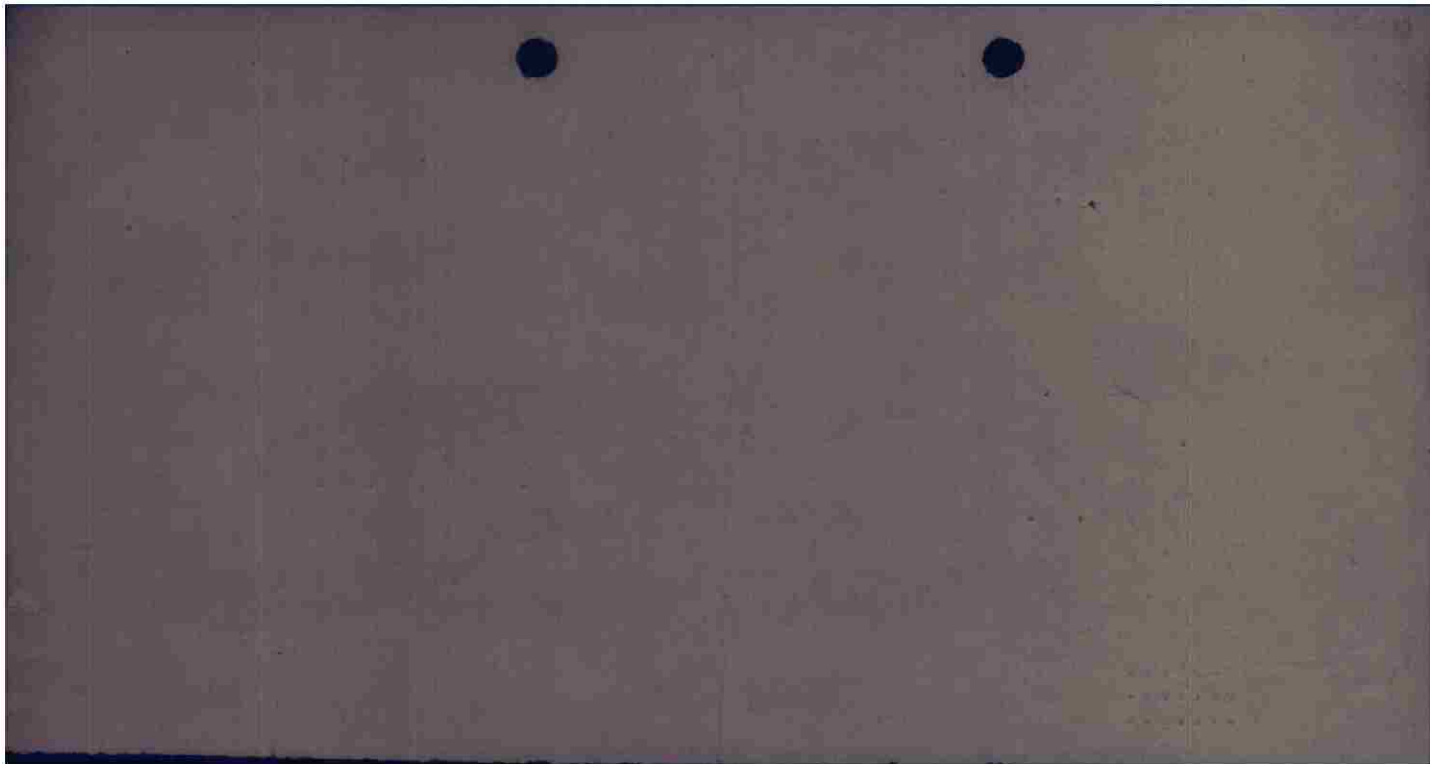
CHANGE PLAN "B" ZERO YOUR TO READ: 06/1500A ADD. PARA, 5. A. (3) THUNDER
CANCEL PARA, 5. B. (3) AND PARA, 5. C. (3).

COMCBTWIG 97
BT 06/1145A
WCB BBB

JEDM R.....
JKI R.....06/1212A
JPO R.....06/1212A

JF KKKK
CEN KKKK

THIS PAGE DECLASSIFIED IAW EO12958



THIS PAGE DECLASSIFIED IAW EO12958

OMEPES JPO JKI V JEA JEA 01/6 (INFO)

FROM 97TH COMBAT BOMB WING (L) 06/0020A

0 COMBOMDIV NINE
409TH COBOMGP
410TH COBOMGP
416TH COBOMGP

BT

ATTN: SIGNAL OFFICER

ADVANCED INFO COPY OF PARA. 5. COMMUNICATIONS OF FIELD ORDER TO FOLLOW.

5. COMMUNICATIONS

A. 409TH BOMB GROUP (49336)

(2) TABLESPOON
(4) ROSELEE

B. 416TH BOMB GROUP (493726)

(2) PROCTOR
(3) JUDITH
(4) ROSELEE

C. 416TH BOMB GROUP (493726)

(2) CORNHILL
(3) JUDITH
(4) ROSELEE

E. GENERAL INFORMATION

(1) PROCTOR AND CORNHILL LEADERS CALL STONEWALL ON "C"
15 MINUTES PRIOR TO REACHING TROOPLINE ADVISING HOW MUCH
EARLY OR LATE. NOT NECESSARY TO CALL WHEN LEAVING TARGET
AREA.

COMCBTWIC 97

BT 06/0020A

AR JMB

JEDM R..... 06/003A SK I ARPK

JEDM TIC PLS FOR JPPO

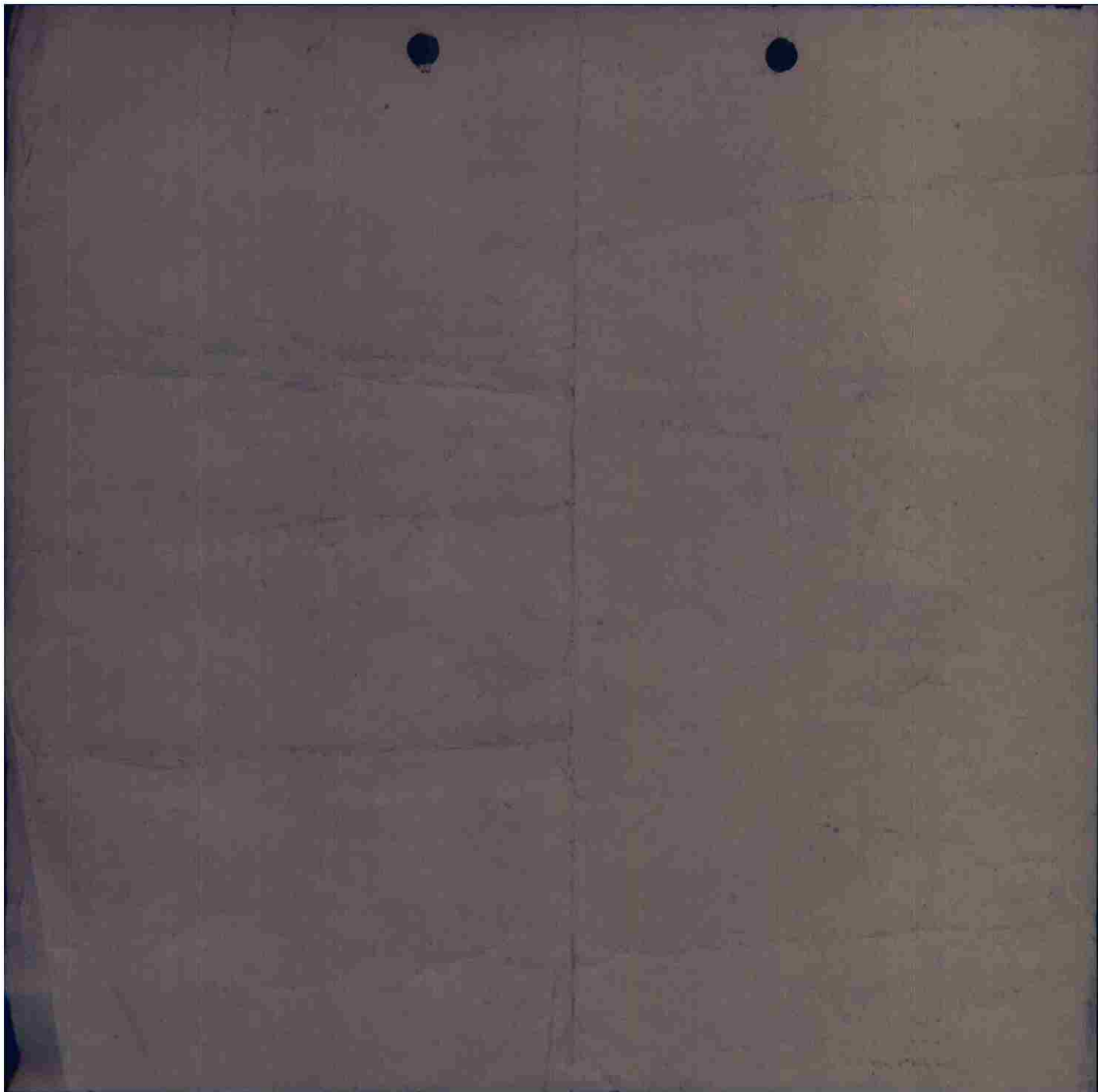
JES R.....06/0030A JMB AR

JPO R.....06/0030A HGP AR

JKI R.....06/0030A UJF AR

TIC PLS

THIS PAGE DECLASSIFIED IAW EO12958



THIS PAGE DECLASSIFIED IAW EO12958

JEDM JEA V JKI JKI 14/86 OP OP

FROM 416TH BOMB GROUP (L) 06/1928A
 TO CG 9TH BOMB DIVISION ATT: A-2
 CG 97TH COMBAT WING ATT: A-2
 CONFIDENTIAL BT

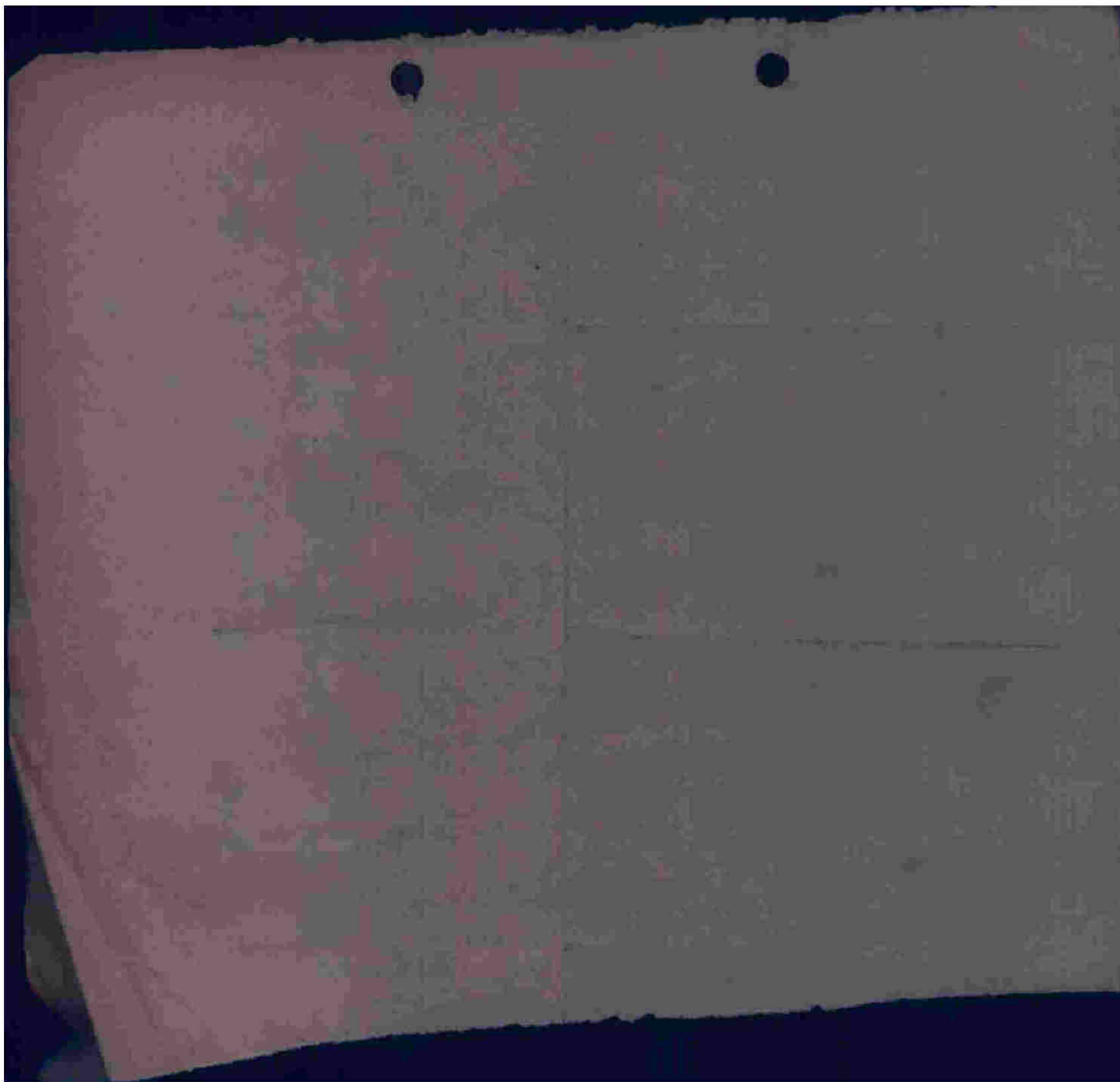
416BG R-134-D
 OPFLASH FOR 6MARCH 1945

- A. 416TH BOMB GROUP (L)
- B. OPLADEN MARSHALLING YARD
- C. 40 A-26'S, INCLUDING 3 CARRYING WINDOW ONLY
- D. 36 A-26'S ON PRIMARY
 1 A326 VECTORED TO TARGET BY ROSELEE
- E. 3 A-26'S CARRIED WINDOW ONLY
- F. 2 X 500 GP RETURNED (MECHANICAL) REASON AS YET UNDETERMINED
 212 X 500 GP ON PRIMARY
 6 X 500 ON TARGET DESIGNATED BY ROSELEE
 2 X 500 FELL QUZ WHEN BOMB BAY DOORS OPENED AT 1612, BELIEVED
 TO HAVE FALLEN AT (F-335848)
- G. EXCELLENT CONCENTRATION ACROSS NORTH SECTION OF M/Y (OBSERVED BY
 BN.)
- H. NIL
- I. NIL
- J. NIL
- K. NIL
- L. 12400
- M. 1616

RADETSKY COBONGR 416

BT 06/1928A
 RSS BBB

JK JEA R.....
 CC UNDER D. SECOND LINE 1 A-26 VECTORED TO TARGET BY ROSELEE
 JEA R.....06/2036A CES KKKK
 JEDM R.....06/2036A CLEV KKK



270
2700
JEDM JEA V JKI JKI 16/86 P P

FROM COBOMGR 416 86/1938A
TO COMBOMDIV NINE ATTN: SIGNAL OFFICER
COMCBTWIG 97 (INFO)
CONFIDENTIAL BT

41SBG R-135-J

A - E YS - 52
B - 6 MARCH 1945 (1431-1730)
C - N-NAN AND J-JIG REPORTED OPS COMPLETED TO PARADE
D - PPF MISSION
EK - NONE
F - NONE
G - NONE
H - NONE
I - NONE
J - NONE
K - B-BAKER HEARD PPF REPOT AND KEKEIKKE RECEIVED ACKNOWLEDGEMENT
FROM STONEWALL PRIOR TO CROSSING TROOP LINE.
M-MIKE WAS VECTORED TO A TARGET BY ROSELEE.

RADETSKY COBOMGR 416
BT 86/1938A
RSS BBB

JEA R.....86/2843A SS KKKK
JEDM R.....86/2843A CLEV KKKK

THIS PAGE DECLASSIFIED IAW EO12958



THIS PAGE DECLASSIFIED IAW EO12958

JKI VIA JEA V JEDM F NR 43/06 OP OP

FROM 1ST PATHFINDER SQ PROV 06/2140A

TO : CG, IX BOMB DIVISION

CG, 97TH COMBAT WING

CO, 416TH BOMB GROUP

SECRET QXX BT

1ST PPF SQ PROV R-155-E "MULTIPLE MSG"

PPF PILOT HUGHES, P. J. 1ST LT.

DATE : --- TIME : ---

A. FORMATION :

- 1. CLASSIFICATION : SUPERIOR
- 2. REMARKS : NONE

B. ~~WINNOWN~~ WINDOW SHIPS :

- 1. CLASSIFICATION : EXCELLENT
- 2. REMARKS :

C. NAVIGATION :

- 1. CLASSIFICATION : EXCELLENT
- 2. REMARKS :

D. INTERPLANE COMMUNICATIONS : POOR

E. BRIEFING : (RENDEZVOUS)

F. MISCELLANEOUS REMARKS: GROUP FORMATION WAS EXCELLENT THROUGHOUT

~~XXXXXXXXXXXXXXXX~~

BOMB RUN DESPITE LOSS OF AIR SPEED AND ALTITUDE BY PPF A/C DUE TO LEFT ENGINE CUTTING OUT.

CO. 1ST PATHFINDER SQ PROV

BT 06/2140A

RELAYED BY SH

SH AR

JKI R07/0045A

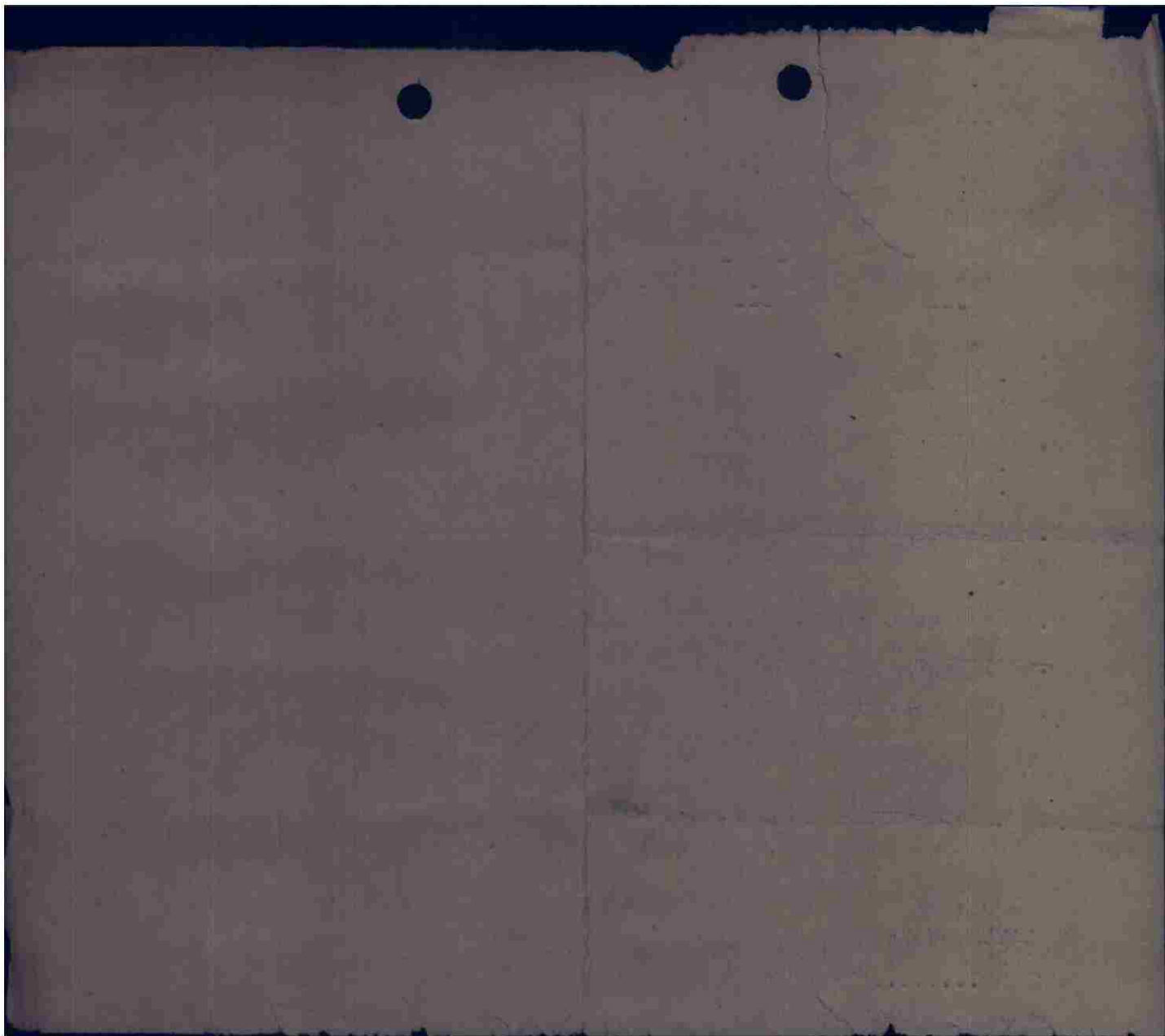
WN

BB

*Dist
8-3
287
Jfo Act*

*Jep
7/8
0345*

THIS PAGE DECLASSIFIED IAW EO12958



THIS PAGE DECLASSIFIED IAW EO12958

JEA JEDM JJF V JKI JKI 3/07 P P
T- JEDM (PASS TO ADDRESSEE)
FROM 416TH BOMB GROUP (L) 06/2230A
TO C.O. 1ST PROVISIONAL PATHFINDER SQUADRON
9TH BOMBARDMENT DIVISION (M) INFORMATION COPY
97TH COMBAT BOMBARDMENT WING (L) INFORMATION COPY

BT
CONFIDENTIAL 416BG R-139-E 6 MARCH 1945

PATHFINDER LEAD FOR OPERATIONAL MISSION ON 6 MARCH 1945 SATISFACTORY
PERIOD END

AYLESWORTH COBOMGR 416

BT 06/2230A

WN AR

XXX

JEA R.07/0513A SH AR

JEDM R.070515A DEG AR

THIS PAGE DECLASSIFIED IAW EO12958



THIS PAGE DECLASSIFIED IAW EO12958

THIS PAGE DECLASSIFIED IAW EO12958

*Jan
6/3/45
2200.*

JEDM JEA V JKI JKI 17/06 P P

FROM HQ 416 TH BOMB GROUP (L) 06/2000A
TO HQ 9TH BOMB DIVISION ATT: A-2 P.I. OFFICER
HQ 97TH COMBAT WING ATT: A-2 DUTY OFFICER
SECRET BT

416BG R-136-D
FIRST PHASE S/A PHOTO REPORT

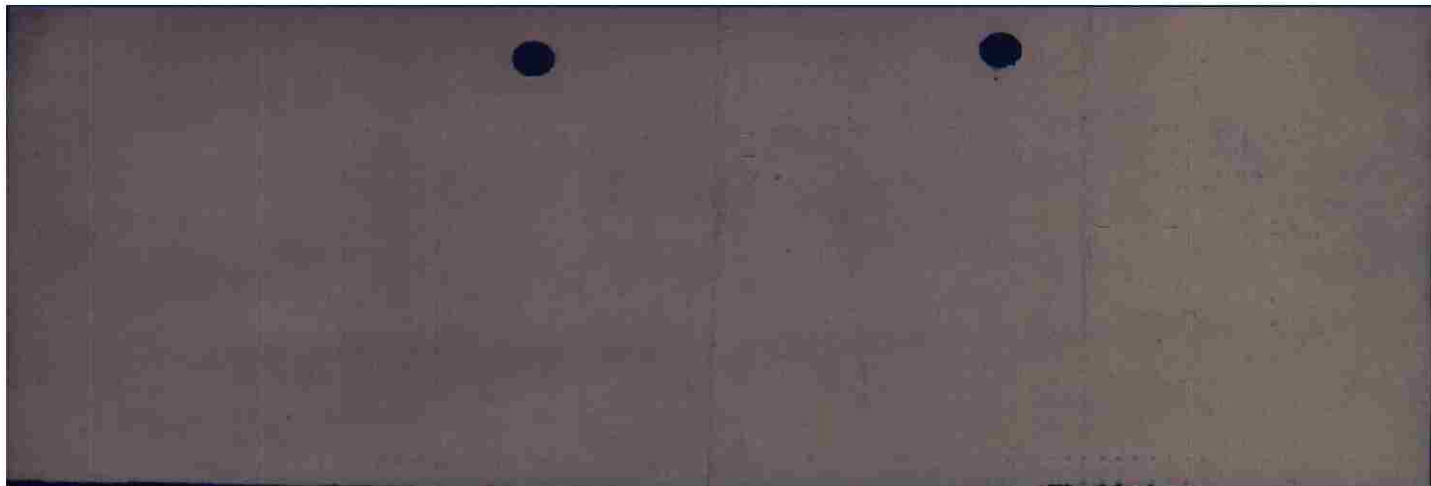
B. OPLADEN M/Y
J. NO PHOTOS DUE TO CLOUD COVER

RADETSKY COBOMGR 416
BT 06/2000A
RSS BBB TO JEDM

JEA R.....06/2047A SS AR
JEDM R.....06/2047A CLEV BBB TO BOTH PLS TIC JEA

THIS PAGE DECLASSIFIED IAW EO12958

THIS PAGE DECLASSIFIED IAW EO12958



THIS PAGE DECLASSIFIED IAW EO12958

June
2/6/45
2219
JE

272

JES JPO JKI VIA JEA V JEDM JJF 41/86 OP OP

FROM 1ST PATHFINDER SQ PROV 86/1988A
 TO : CG, IX BOMBER DIVISION ATT : A-2
 CG, 97TH COMBAT WING
 CG, 98TH COMBAT WING
 CG, 99TH COMBAT WING
 CO, 394TH BOMB GROUP
 CO, 409TH BOMB GROUP
 CO, 386TH BOMB GROUP
 CO, 397TH BOMB GROUP
 CO, 391ST BOMB GROUP
 CO, 322ND BOMB GROUP
 CO, 412TH BOMB GROUP
 CO, 416TH BOMB GROUP

"BOOK MESSAGE"

SECRET OQX BT

1ST PFF SQ PROV R-153-D "OPS-FLASH"

- A. FIRST PATHFINDER SQUADRON WITH THE 410TH BG
- B. OPLADEN M/Y WF-491742
- C. ONEB-26
- D. ONE B-26- PRIMARY - EQUIPMENT
- E. NONE
- F. 4 X 500 G.P. ON PRIMARY
- G. UNOBSERVED 10/10
- H. NONE
- I. NONE
- J. KOLN AREA WF-500 620 MIHFF
- K. NONE
- L. 12500 PRIMARY
- M. 1558 1/2 PRIMARY

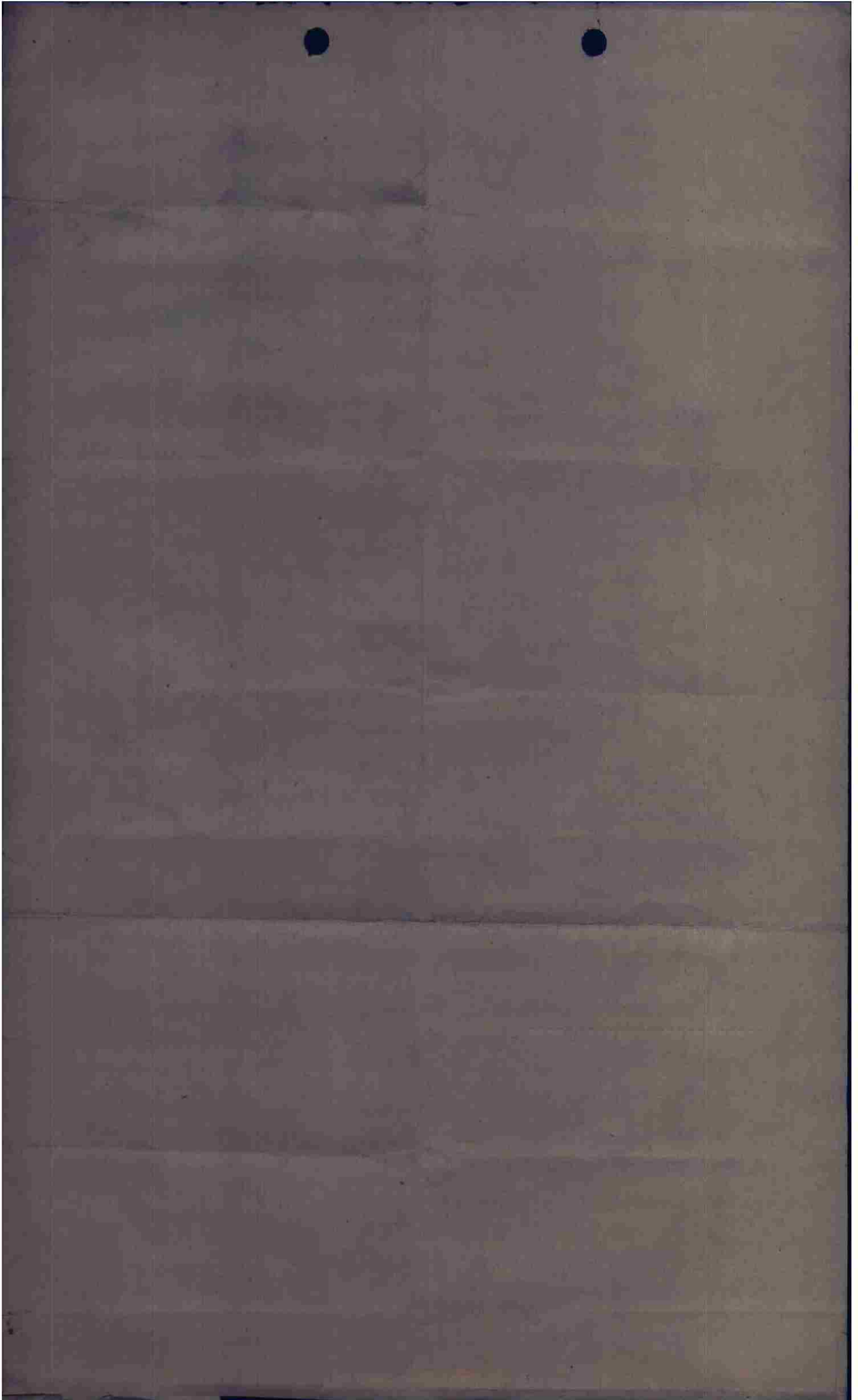
NOTE : GROUP FORMATION AND WINDOW SHIPS EXCELLENT.

ANNEX : PFF CALLED ROSALEE UPON ENTRY INTO TAC AREA AND RECEIVED FIX ONE MINUTE LATER.

- A. FIRST PATHFINDER SQUADRON WITH THE 409TH BG.
- B. RECKLINGHAUSEN M/Y RA-649 335
- C. ONE B-26
- D. ONE B-26 PRIMARY EQUIPMENT
- E. NONE
- F. 4 X 500 GP'S ON PRIMARY
- G. UNOBSERVED 9/10
- H. NONE
- I. NONE
- J. MIHFF HALTERN RA - 623 500
 MIHFF TARGET AREA
- K. NONE
- L. 12500 PRIMARY
- M. 1541 PRIMARY

NOTE : WINDOW SHIPS EXCELLENT. GROUP FORMATION GOOD.

ANNEX : NO CALL MADE ROUTE IN 2ND TAF AREA.



- A. FIRST PATHFINDER SQUADRON WITH THE 394TH GP.
- B. RECKLINGHAUSEN RA-646 335
- C. ONE B-26
- D. NONE
- E. ONE B-26 EQUIPMENT FAILURE.
- F. 4 X 500 GP'S RETURNED
- G. NIL
- H. NONE
- I. NONE
- J. MINFF IN TARGET AREA
- K. NONE
- L. 12500 PRIMARY
- M. 1520 PRIMARY

NOTE : PFF OFF COURSE - WAS "J" OFF ON SECOND RUN WHEN THEY PICKED UP SIGNALS. GROUP DROPPED ON SECOND RUN ON "G". TGT. UNKNOWN

ANNEX : NO CALL MADE TO FIGHTER CONTROL ENTIRE ROUTE IN SECOND TAF AREA.

- A. FIRST PATHFINDER SQUADRON WITH THE 416 GP.
- B. OPLLADEN M/Y. WF 491738.
- C. ONE B-26
- D. ONE B-26 ON PRIMARY ON EQUIPMENT.
- E. NONE
- F. 4 X 500 GP ON PRIMARY.
- G. UNOBSERVED -- 10/10.
- H. NONE
- I. NONE
- J. NONE
- K. NONE
- L. 12320 PRIMARY
- M. 1616 PRIMARY

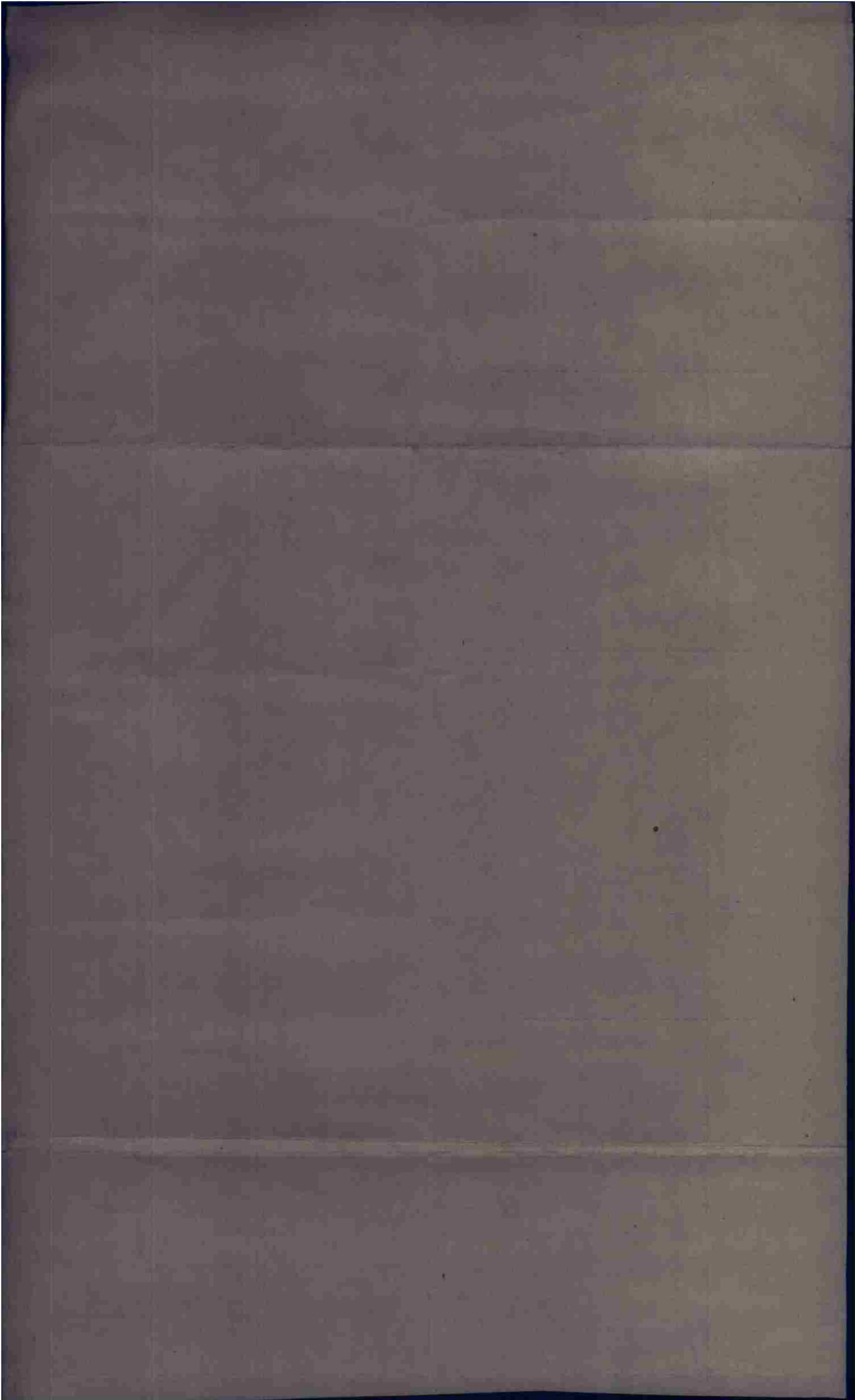
NOTE : GROUP FORMATION EXCELLENT.
ANNEX : CALLED ROSALEE UPON ENTRY INTO TAC AREA, RECEIVING FIX TWO MINUTES LATER.

- A. FIRST PATHFINDERSQUADRON WITH THE 391 GROUP
- B. SIEGBURG STORAGE DEPOT WF 620448
- C. 2 B-26'S.
- D. 2 B-26'S PRIMARY ON EQUIPMENT.
- E. NONE
- F. 8 X 500 UPON PRIMARY.
- G. UNOBSERVED 10/10.
- H. NONE
- I. NONE
- J. WIGXXX WIFF BONN WF 550376, WIFF MONTABAU, VC 070039, -
WIFF ENGERS WF 858026
- K. NONE
- L. 13500 - 13000 PRIMARY
- M. 1539 - 1545 PRIMARY

NOTE : FORMATION GROUP GOOD. WINDOW WIP POOR.
ANNEX : RIPSAN CALLED UPON ENTRY INTO AREA RECEIVING FIX ONE MINUTE LATER.

- A. FIRST PATHFINDER SQUADRON WITH 322 GROUP.
- B. SIEGBURG STORAGE DEPOT WF 620448
- C. 2 B-26'S
- D. 2 B-26'S PRIMARY ON EQUIPMENT.
- E. NONE
- F. 8 X 500 GP'S ON PRIMARY
- G. UNOBSERVED 10/10
- H. NONE
- I. NONE
- J. NONE
- K. NONE
- L. 1355XXXX 13500 BOTH BOXES PRIMARY
- M. 1618, 1619. PRIMARY

NOTE : GROUP FORMATION EXCELLENT.
ANNEX. CALLED RIPSAN UPON ENTRY INTO TAC AREA AND RECEIVED FIX THREE MINUTES LATER.



- A. FIRST PATHFINDER SQUADRON WITH THE 386 GROUP
- B. LENKERBECK M/Y RA 613408
- C. 1 B-26
- D. 1 B-26 CASUAL ON GEE -- RECKLINGHAUSEN RA 635337
- E. 1 B-26 EQUIPMENT FAILURE
- F. 4 X 500 GP'S ON CAUSXXX CASUAL
- G. UNOBSERVED 10/10
- H. NONE
- I. NONE
- J. MAHFF RECKLINGHAUSEN RA 635337
- K. NONE
- L. 13000 CASUAL
- M. 1620 1/2 CASUAL

NOTE : GROUP FORMATION GOOD, GROUP LEASXXX LEAD POOR -- VERY ERRATIC.
 ANNEX. NO CALL MZXX MADE AS ENTIRE ROUTE WAS IN SECOND TAF AREA

- A. FIRST PATHFINDER SQUADRON WITH THE 397 GROUP
- B. SIEGBURG M/Y WF 621444
- C. 2 B-26'S
- D. 1 B-26 ON PRIMARY ON EQUIPMENT, FIRST BOX
 1. B-26 ON PRIMARY ON GEE, NO RELEASE SIGNAL SECOND BOX.
- E. NONE
- F. 8 X 500 GP ON PRIMARY
- G. UNOBSERVED 10/10
- H. NONE
- I. NONE
- J. WAHFF COLOGNE AREA WF 502578
- K. NONE
- L. 13500, 1300 PRIMARY
- M. 15221/2, 1535 PRIMARY

NOTE : GROUP FORMATION GOOD
 ANNEX. CALLED RIPSAM AND RECEIVED FIX ONE MINUTE AFTER ENTERING TAC AREA.

CO 1ST PATHFINDER SQ PROV

BT 06/1900A

WF BB

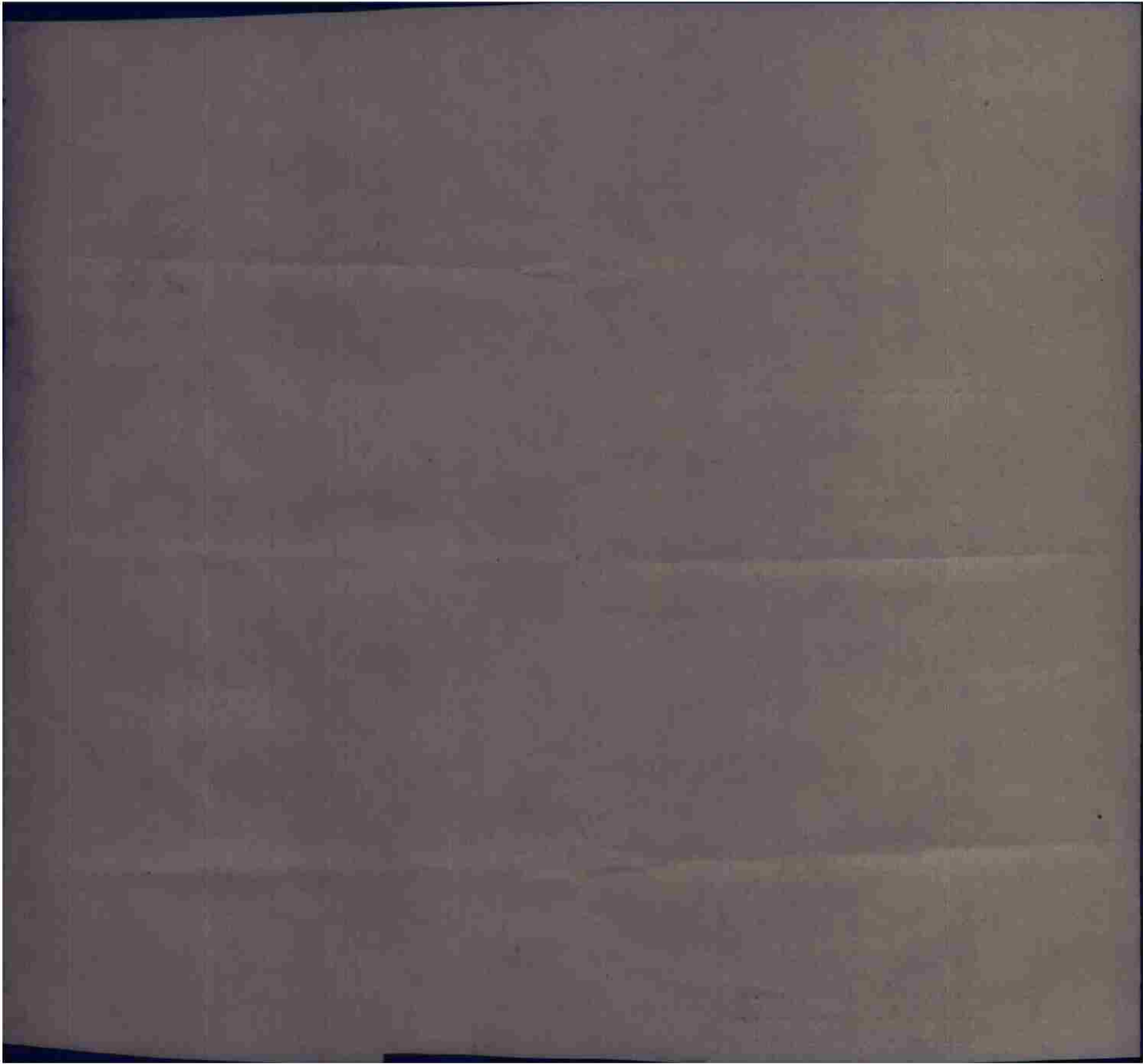
RELAYED BY CES BBBB

JES R.....06/2205A JMB KKK

JPO R.....06/2200A LB KK

JKI R.....06/2200A RSS IKK

THIS PAGE DECLASSIFIED IAW EO12958



THIS PAGE DECLASSIFIED IAW EO12958