

TO: Commanding Officer, 97th Combat Bombardment Wing (L).

FROM: Commanding Officer, 416th Bombardment Group (L).

FUEL CONSUMPTION DATA

F.O.# 447 DATE 26 July 1944 BOMBING ALT. 12000 Ave. Miles Flown 476

FORM POS.	ACSN	PILOT Name & Rank	Fuel Gal.	Oper. Time	
1	43-9645	Major I. F. Dunn	390	2:35	151
2*	43-10135	Capt. M. J. Huff	400	2:35	155
3	43-9219	Lt. R. W. York	440	2:35	171
4	43-9363	Lt. J. D. Adams	335	2:40	145
5*	43-9937	Lt. C. L. Estes	450	2:35	174
6*	43-9925	Lt. D. L. Withington	425	2:40	159
7	43-9376	Lt. P. F. E. MacLanau	425	2:40	159
8	43-9743	Lt. E. R. Hayer	425	2:40	159
9	43-9224	Lt. J. F. Smith	410	2:40	154
10*	43-9961	Lt. M. S. Street	475	2:40	178
11	43-9227	Lt. J. E. Blomgren	335	2:40	126
12	43-9674	Lt. R. B. Robertson	325	2:40	121
13	43-9390	Lt. N. V. Shainberg	430	2:40	161
14*	43-9929	Lt. H. B. Clark	420	2:45	153
15	43-9717	Lt. A. J. Vleghele	480	2:40	180
16*	43-10247	Lt. W. H. Land	460	2:45	168
17*	43-9943	Lt. D. W. Elliott	460	2:45	168
18*	43-9900	Lt. J. F. Allen	510	2:45	185
19*	43-9892	Lt. D. G. Grunig	Returned early as briefed.		
19*	43-21711	Lt. L. A. Marxzoff	490	2:45	178
20	43-9444	Lt. J. F. Neagher	450	2:45	163
21*	43-9951	Lt. J. H. Miller	430	2:45	157
22	43-9220	Lt. T. J. Murray	450	2:45	163
23	43-9493	Lt. R. C. Morehouse	500	2:45	182
24	43-9719	Lt. W. H. Ames	420	2:45	153
25*	43-10176	Lt. G. F. Bartmus	370	2:45	124
26*	43-9894	Lt. C. J. Anderson	475	2:45	173
27*	43-10150	Lt. C. C. Mich	470	2:45	170
28*	43-10210	Lt. R. V. Miracle	450	2:45	163
29*	43-9907	Lt. T. Clausen	505	2:45	183
30*	43-21819	Lt. T. D. McGready	450	2:45	163
31	43-9217	Lt. P. G. Atkinson	390	2:50	138
32*	43-9978	Lt. C. L. McGlohn	400	2:55	137
33	43-9380	Lt. E. L. Johnson	450	2:50	160
34	43-9209	Lt. E. J. Harvold	410	2:50	145
35*	43-10211	Lt. R. B. Singlatary	500	2:50	177
36	43-9200	Lt. N. G. Brown	380	2:50	125
37*	43-21764	Lt. J. P. Kenny	Returned early as briefed.		

*Designates Wing Rack Ships.

Exp. Avg. 159 Gals Per Hour

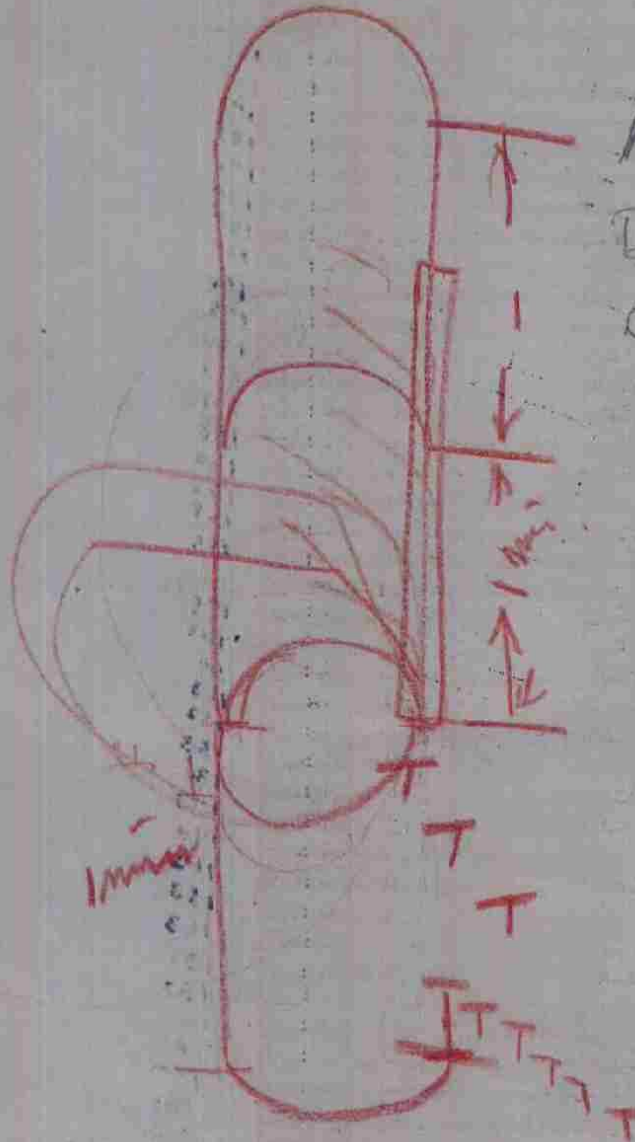
Roney

23 July 1941

138-442

Put F.O. no. on Report.

1 Spare return.



	P	A	E
A	27	26	28
B	28	26	28
C	28(27)	26 ⁽²⁵⁾	27
D	26	25	27