

IRIS Public Record

Key Information

Main: GROUP/0416/BOMBARDMENT (LIGHT)

Rcvd:	Rel	1985/03/05
Indexer ID: 33	Entered Date:	
QC ID:	QC'd Date::	
Scanner ID:	Scanned Date:	
Acc ID	Acc Date:	

Document Type:

Call Number: GP-416-SU-OP-S

IRIS Number: 00091836

Accessions Notes:

Old Accession Nbr:

Title:

Beginning Date: 1944/05/02

End Date: 1944/05/02

Publication Date:

Classification UNCLAS

Media Roll #: 0000001706 First Frame: 613 Last Frame: 919 Linear Feet: 0

Old MFlm Roll # B0528

NUMPAGE 306

Title Extensions:

Abstract CONTAINS BOMBING INFORMATION AND AIRCRAFT REPORTS.

Descriptive Notes:

Title MISSIONS: FOLDER NUMBER 4

Added Entries

Author:

Subject:

Major Command:

Administrative Markings

No Administrative Markings Listed

Security Review Information:

GP 416-SU-OP-S
12 MAY 1944

MISSIONS

FOLDER NO. 4

DATE	NO.	F.O. NO.
		295
MAY 2	36	300
7	37	301
7	38	302
8	39	303
8	40	304
9	41	305
9	42	308
11	43	310
11	44	311
12	45	312
12	46	313
13	47	315
15	48	

00091836

DECLASSIFIED
DOD DIR 5200.9 27 Sep 58

MICROFILMED

9386-10

File

SECRET
By authority
CG, STA. 170
16 May 1944
Init. _____

HEADQUARTERS
FOUR HUNDRED SIXTEENTH BOMBARDMENT GROUP (L)
Office of the Commanding Officer

P.R.C.

AFPO 140, U. S. Army,
17 May 1944.

Subject: Transmittal of A-3 Bombing Information Report.
To : Commanding General, IX Bomber Command, AFPO 140, U. S. Army.

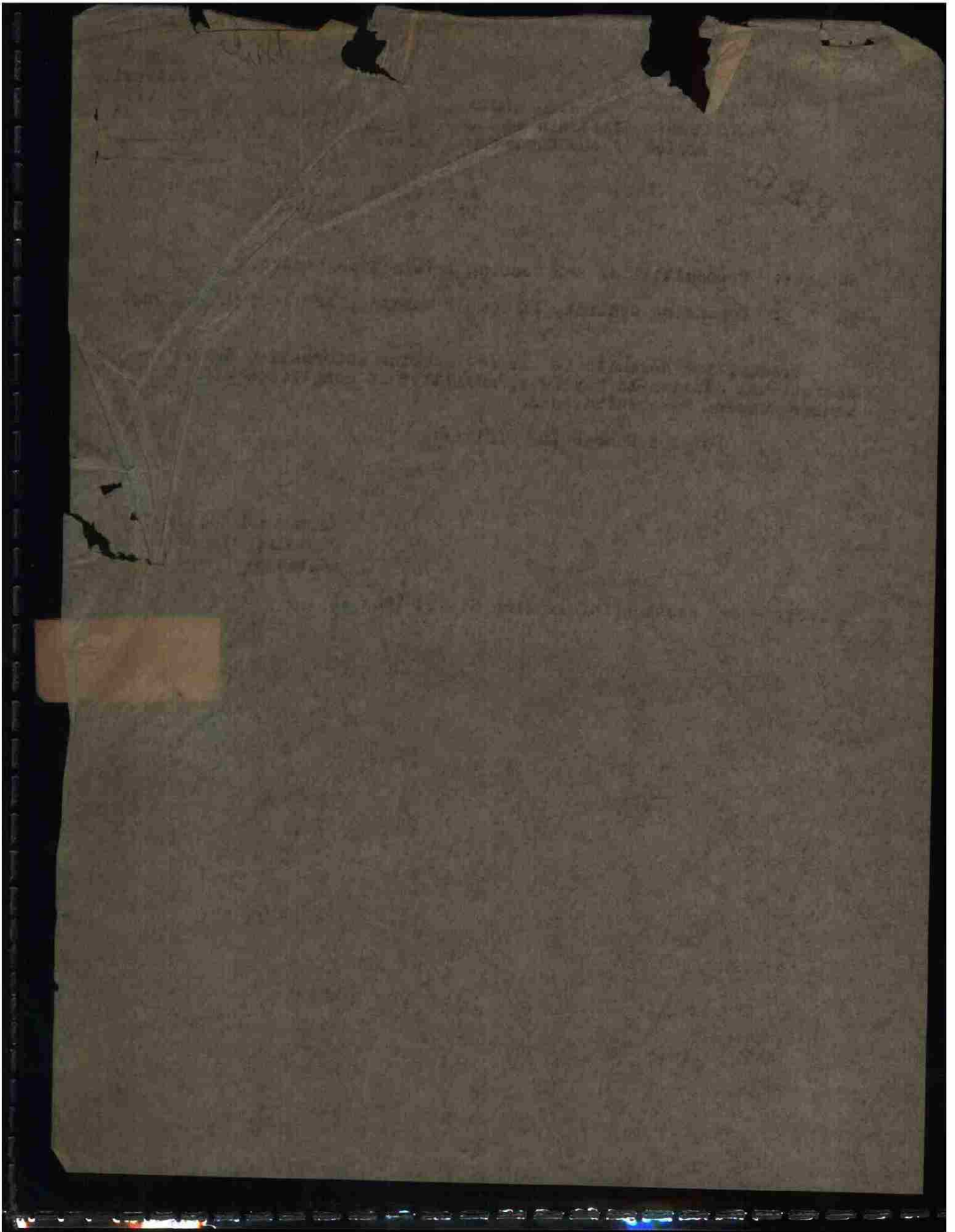
Transmitted herewith is the A-3 Bombing Information Report on operational mission 15 May 1944, submitted in compliance with IX Bomber Command Memorandum 50-2.

For the Commanding Officer:

GEORGE SCHENKEL,
Captain, Air Corps
Adjutant.

1 Incl: - A-3 bombing Information Report (Box 1)

MAY 15 1944
#48



SECRET

File

BOMBING INFORMATION

EX P.C. FIELD ORDER NO. _____

NOTE "A"

BOX _____ GROUP 415 DATE 18 May 44 TARGET ATTACHED Small Airfield

- 1. Method of Sighting: Pre-set synchronous.
- 2. Bombing approach: 340° Mag.
- 3. Was mercury erection system used? YES _____ NO X
- 4. Did entire box drop on lead bombardier? YES X NO _____

In either case explain fully method of sighting and dropping of bombs; and specify exact aiming point actually used: Pre-set with corrections for unsynchronized bombing. NPI used as AP. No trail subtracted. Runs made through intervening clouds.

- 5. Name of lead bombardier: Lt. Powell
- 6. Name of lead pilot: Major Kane
- 7. Intervalometer setting: None
- 8. Indicated Air Speed: 215 Ground Speed: 220 Altitude: 11,000
- 9. Length of bomb run: 55 Sec: _____
- 10. Bomb Load and Fusing per A/C: _____ X 500 lb FUSED _____ N 100 lb
- 11. Total Bombs Dropped: 74

- 12. Full statement of all factors affecting bombing - including: -
 - (a) Did weather conditions or visibility adversely affect identification of target attached or bombing. YES _____ NO X. If "YES" state conditions and effect.
 - (b) Apart from weather or visibility, was any difficulty encountered in identifying target attached, IP or AP? YES _____ NO X. If answer is "YES", state circumstances and effect on bombing.
 - (c) Did Flok affect bombing? YES _____ NO X. If answer is "YES", state to what extent Flok affected bombing or bomb run.
 - (d) To what extent did attacks by enemy aircraft affect bombing? None
 - (e) State any difficulties on bombing run: None
 - (f) Malfunctions, personnel errors or other factors affecting bombing: None
 - (g) Bombing results as reported by crews:

Aimed at right Target: YES X NO _____

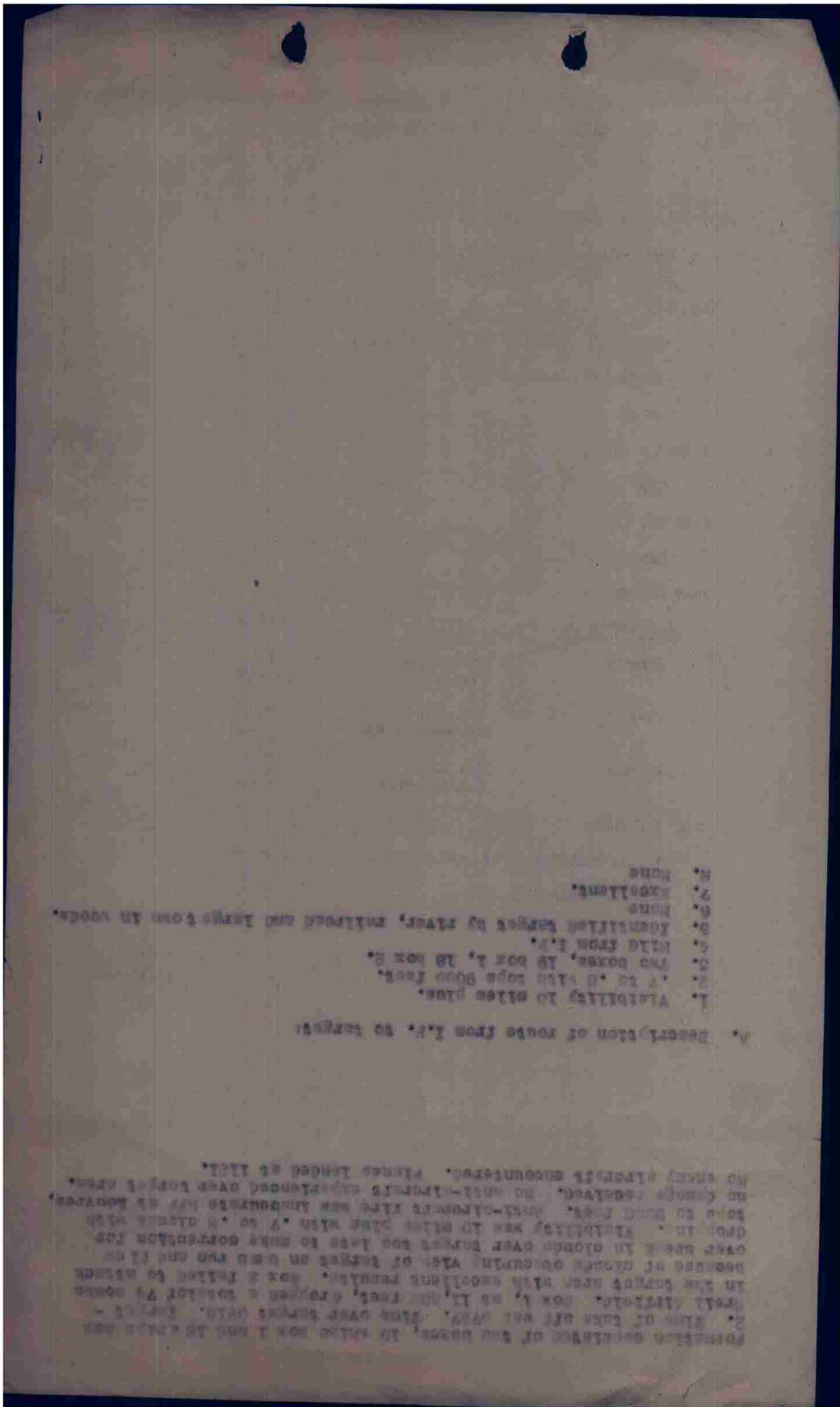
Results claimed: GOOD _____ FAIR _____ POOR _____ BAD MISS _____

EXCELLENT X

NOTE: No attack by second box.

(over)

SECRET



- 1. Airtight to wire line.
- 2. A 20' x 10' rope door lock.
- 3. Two boxes, 18 box 1, 18 box 2.
- 4. Wire from I.P.
- 5. Identification number of steel, millwork and large door in room.
- 6. None
- 7. None

V. Description of route from I.P. to target:

NO OTHER SPECIFIC ENCOUNTERS. PLACES LISTED AS NOT IN CONTACT. NO UNIT-LEVEL EXPERIENCED CASE LOGS AT THIS TIME TO BE FOUND. UNIT-LEVELS ARE NOT IDENTIFIED AS BEING IN CONTACT WITH THE UNIT. IDENTIFY AND TO BE WITH THE UNIT. A 20' x 10' ROPE DOOR LOCK IN ROOM CASE NUMBER FOR USE TO MAKE CONNECTION FOR DEGREE OF OTHER CONTACT. ALSO OF INTEREST ON THIS AND THE IN THE CASE WITH THE IDENTIFIED. BOX 2 LISTED AS WITH IDENTIFIED. BOX 1, IN THE CASE, GROUP 2 IDENTIFIED AS BOX 2. NONE OF THE CASE. THIS CASE NUMBER WITH IDENTIFIED - IDENTIFIED NUMBER OF THE BOXES. IN THIS BOX 1 AND THE CASE

SECRET
 BY AUTHORITY, STA 170
 15 May 1944
 INITIAL

HEADQUARTERS
 416TH BOMBARDMENT GROUP (L)
 Office of the Commanding Officer

APC 140, U. S. Army.
 16 May 1944.

SUBJECT: Mission Report--Aircraft.

TO : Commanding General, IX Bomber Command, APC 140, U.S. Army.
 (Attn: Maintenance Branch)

PART I.

- (1) 15 May 1944--0727-3reil (Airfield)
- (2) 36 (57 alerted)
- (3) 36

PART II.

None

PART III (1)

None

PART III (2)

<u>AAF SERIAL NO</u>	<u>CAUSE</u>	<u>DESCRIPTION</u>	<u>SCRTIN</u>
43-2376	Radio hatch blew off	Radio hatch blew off	No
43-5188	One bomb delayed release	Tight away braces	Yes
43-2485	One bomb delayed release	Tight away braces	Yes

PART III (3)

18 aircraft failed to bomb because of cloud coverage.

For the Commanding Officer:

SEYMOUR SCHREIBER,
 Captain, Air Corps,
 Adjutant.

MISSION NO. 48

LOADING LIST
BOX 1
FLIGHT 1

15 MAY 1944

1. 455 "T"
MAJ W J MENG ✓
LT V H POWELL ✓
S/S R F STOBERT
S/S F P GLYNN

4. 221 "F"
LT R V WHEELER ✓
S/S J S BROWER
S/S E CORRIN

2. 914 "X"
CAPT C R JACKSON ✓
LT A H MALTEY ✓
S/S R H RILEY
S/S A J BONAMO

5. 393 "K"
LT R E GREENLEY ✓
S/S H C WORDEN
S/S J J RZEPKA

3. 892 "L"
LT R O GRUETZEMACHER ✓
S/S T I WALSH
SGT W J DANIELS

6. 165 "H"
LT J D ADAMS ✓
S/S P L CLEARMAN
SGT A J ZEKUS

FLIGHT 11

1. 200 "A"
LT L J STRAGUSA ✓
S/S J N HEME
S/S F L BROWN

4. 182 "B"
LT R V MIRACLE ✓
S/S B C SIEG
S/S J C BURKHALTER

2. 227 "F-1"
LT L E HILL ✓
S/S C H YOST
S/S R W BURCH

5. 195 "D"
LT B H BRADFORD ✓
S/S R W MAC DONALD
S/S A A HILL

3. 380 "N"
LT R D LIESHER ✓
S/S A J ANTANAITIS
S/S H R HEDRICK

6. 176 "X-1"
LT E B KREH ✓
S/S D R SCHENCK
SGT E SHELTON

FLIGHT 111

1. 696 "G"
CAPT H F CONANT ✓
S/S W E McCREERY
S/S H J SYLVA

4. 963 "N-1"
LT G F BARTMUS ✓
S/S F L FLACKS
S/S J R ORR

2. 978 "S"
LT R G MEREDITH ✓
S/S V E MOLVER
S/S C M GRAY

5. 935 "F-2"
LT W E DOWNING ✓
SGT K E HORNECK
S/S E A ANDERSON

3. 209 "K-1"
LT R D POINDEXTER ✓
S/S D H SIMPSON
T/S L G ROBBINS

6. 203 "R"
LT R K CRUZE ✓
S/S C F LOVE
S/S F L ADAIR

SPARE

701 "H-1"
LT W J GREENE ✓
S/S J A OCHARA
SGT W F COLBERT

MISSION NO. 48

LOADING LIST
BOX 11
FLIGHT 1

15 MAR 1944

1. 125 "M"
CAPT D A HULSE ✓
LT R CONTE ✓
S/S F D ALLRED
MR HUTTON

4. 951 P
LT F W DEMAND ✓
S/S C W MIDDLETON
SGT R J TROYER

2. 135 "T"
CAPT G M MCNUITY ✓
LT F H BURSTIEL ✓
S/S H E WHITE
S/S R F ADDLEMAN

5. 493 V
LT R W YORK ✓
SGT L A ASHTON
SGT R M GRISWOLD

3. 225 "G"
LT C L MC GLOHN ✓
S/S J W MORAN
SGT D E BURNS

6. 937 B
LT A R DURANTE ✓
S/S H T BEST
S/S I R DEGIUSTI

FLIGHT 11

1. 900 "Q"
LT R J MORTON ✓
SGT H C RODGERS
SGT J E VAN DUYN

4. 376 O
LT W A PECK ✓
~~SGT D A BURGESS~~
S/S H E KELTON

GREENE

2. 390 G-1
LT P F E MAC MANUS ✓
S/S J L ROGERS
S/S G I FLEISCHMAN

5. 189 P-1
LT E E DEMUN ✓
S/S M ROSENSTEIN
S/S H O CARNEY

3. 840 V-1
LT ~~XXXXXXXXXX~~ A W GULLION ✓
S/S ~~XXXXXXXXXX~~ G L COFFEY
S/S G F COPE

6. 679 R
LT P DONTAS ✓
S/S A L NIELSON
S/S W E FIELDS

FLIGHT 111

1. 444 "J"
LT H L SOMMERS ✓
LT R J MC QUADE ✓
T/S W J KELLY
S/S W G FERGUSON

4. 743 W
LT W C SIGGS ✓
SGT R W NICKS
S/S N RADLICH

2. 983 J-1
LT E J RENTH ✓
S/S C D LANAVE
S/S F M CITY

5. 211 C
LT N V SHAINBERG ✓
S/S C A PRINDLE
S/S E T EPPS

3. 181 A
LT W H LAND ✓
S/S S F ALDEN
S/S R L BALLINGER

6. 680 C-1
LT H E HONES ✓
S/S I S KASPER
S/S H E BOYER

MERCHANT

SPARE

219 D
LT W A MERCHANT ✓
S/S C J HARP
S/S K P BROWN

OPERATIONAL PRIORITY

FROM: 416TH BOMB GROUP (L)

TO: IX BOMBER COMMAND

TO: 97TH COMBAT WING

416BG M Wing E

CONFIDENTIAL IN THE CLEAR

"J" FORM CLEARANCE F-1 15 MAY 1944

PREPARED BY MAJOR JOHN G NAPIER

A.

B. 0830

C. BEACHY HEAD

D. BOX I R/T KEEPSTONE ONE

670 . . . 8 . . . T L A F-1 N S K-1 G

671 . . . 4 . . . F K H X

668 . . . 6 . . . B D XIN-1 F-2 R

669 . . . 1 . . . SPARE . . . H-1

GROUP LEADER . . . 670 . . . T

DEPUTY . . . 671 . . . X

BOX II R/T KEEPSTONE TWO

668 . . . 2 . . . M J

669 . . . 11 . . . T Q G-1 V-10 P-1 R J A W C

671 . . . 05 . . . G P B V C-1

670 . . . 1 . . . SPARE . . . ID

SECOND BOX LEADER . . . 668 . . . M

DEPUTY . . . 669 . . . T

E. 11500

F. ETRETAT

G. 0845

H. 61 MINUTES

J. ETRETAT

K. BEACHY HEAD

L. 1004

M. 1. E.T.D. . . . 0750 . . . E.T.A. . . . 1026

2. 4 X 500 G.P.

3. 4 HOURS

4. BOX 1 . . . Z 354

BOX 11. . . Z 354

5. NONE

MACE COBOMGR 416

I CERTIFY THAT THIS IS OFFICIAL BUSINESS;

JOHN M. BONURA,
1ST LT., AIR CORPS,
OPNS. STAT. OFFICER.

One

HEADQUARTERS
115TH BOMB GROUP (L)
OFFICE OF THE WEATHER OFFICER

APO 140
15 May 1944

SUBJECT: Interrogation Report

TO : Staff Weather Officer, Headquarters IX
Bomber Command, APO 140, U.S. Army.

BASE AT TAKE OFF: Visibility 6 miles, 4/10 stratocumulus
at 4000 feet.

ROUTE OUT: Visibility 10 miles, except London area 4 to 5
miles. 3 to 4/10 low clouds over England. Base
4000 feet, tops 5000 feet. 4 to 5/10 over channel
with 6 to 8/10 over France with tops to 9000 feet.

TARGET: 7 to 8/10 with tops to 9000 feet. Large break
directly over target. Visibility 10 miles plus.

ROUTE BACK: Similar to route out except clouds over England
7 to 8/10 tops 7000 feet base 4000 feet.

BASE ON RETURN: Visibility 7 miles 6 to 8/10 stratocumulus
and cumulus at 3500 feet.

WINDS: As forecast.

TIME OVER TARGET: 0923

First box unaffected by weather, but low clouds obscured
aiming point of second box.

Walter D. Castle
WALTER D. CASTLE
1st Lt. Air Corps,
Staff Weather Officer.

1 Incl. 2 Route Forecast Form

WEA THERS FIELD TAKE OFF 0730
 416th Bomb Group (A) RETURN 1047
 OPERATIONAL ROUTE FORECAST
 DATE 15 MAY 1944
 PERIOD 0700 - 1100
Hq 505 USAFP 9-43/90M/15227

	A BASE TO TARGET	B TARGET	C TARGET TO BASE	D
WEATHER	PARTLY CLOUDY	PARTLY CLOUDY	PARTLY CLOUDY	
CLLOUDS	2 NIL MEDIUM OR HIGH CLOUDS 2-4/10 LOW CLOUDS BASE 2000 TOP 4-5000 4-6/10 OVER CHANNEL 6-8/10 AT FRENCH COAST BREAKING INLAND TO 4-6/10 OVER CONTINENT	NIL HIGH OR MEDIUM CLOUDS BASE 2500-3000 TOPS 5-6,000 FEET	SAME AS BASE TO TARGET EXCEPT 6-7/10 CUMULUS OVER ENGLAND ON RETURN	
ICING	3 MODERATE IN CLOUDS ABOVE 3,000 FEET	MODERATE IN CLOUDS ABOVE 3,000 FEET	MODERATE IN CLOUDS ABOVE 3,000 FEET	
VISIBILITY	4 5-10 MILES	8-12 MILES	6-10 MILES	
HEIGHT SURFACE	DIRECTION VELOCITY	DIRECTION VELOCITY	DIRECTION VELOCITY	DIRECTION VELOCITY
5,000 FT	040 10			
15,000 FT	020 15			
15,000 FT	010 22			
12,000 FT	360 25			
15,000 FT	330 30			
FT				
FT				

BASE ALTIMETER SETTING 30.40

TARGET SURFACE TEMP +9°C
 TEMP AT 14,000 FT. -16°C

TARGET MEAN TEMP -5°C
 TARGET SURFACE (PRESSURE-ALT) -116
SECONDARY -38

AIRCRAFT REPORT

		BASE TO COAST	OVER CHANNEL OR SEA	OVER CONTINENT & TARGET
TIME				
POSITION				
ALTITUDE				
CLOUD BELOW AIRCRAFT	AMOUNTS AND TYPE			
	HEIGHT OF BASE AND TOP			
CLOUD ABOVE AIRCRAFT	AMOUNTS AND TYPE			
	HEIGHT OF BASE AND TOP			
VISIBILITY				
TEMPERATURE				
WINDS				
REMARKS: AS WEATHER ENCOUNTERED, FRONTAL POSITIONS, ETC.				
<p>NOTE: AT LEAST ONE COMPLETE OBSERVATION SHOULD BE ENTERED IN EACH COLUMN. THE OTHER SIDE OF THIS CARD HELPED YOU - WON'T YOU GIVE THE NEXT FELLOW A BREAK!</p>		<p>CLOUD TYPES AND ABBREVIATIONS LOW CLOUDS = ST-STRAUTUS SC-STRATOCUMULUS MIDDLE CLOUDS = AS-ALTOSTRATUS AC-ALTOCUMULUS HIGH CLOUDS = CI-CIRRUS CS-CIRROSTRATUS CLOUDS OF VERTICAL EXTENT = CU-CUMULUS CB-CUMULONIMBUS</p>		<p>FRONTS -</p>

Mission No. 48
 Box I

MAY 15 1944

S Q D N	A / C LTR	A / C NO.	PILOT	D I S T A N C E	TARGET	A T O	ENG. COAST OUT	ENEMY COAST IN	T O T	ENEMY COAST OUT	ENG. COAST IN	G A M E R A	F U L L O B D	E N D U R	L A T I T U D E	R E M A R K S
C	T	455	Meng		CREIL	0727	0830 Beachy Head	0845	0918	0946 Stretat	1004 Beachy Head	HC	745	4	50	
D	X	914	Jackson			0728	11500	11500		10,000	9,000	C			50	
C	L	897	Gruekmacher												51	
D	F	771	Wheeler			0729						C			52	
D	K	393	Greenley			0729									53	
D	H	165	Adams			0729									53	
C	A	700	Siracusa			0729									54	
C	F-1	777	Hill			0730									55	
C	N	380	Leshner			0730									55	
A	B	187	Miracle.			0730						C			56	
A	D	195	Bradford			0730									40	
A	K-1	176	Kreh			0731									56	
C	G	696	Comant			0731									57	
C	S	978	Meredith			0731									57	
C	K-1	709	Poindexter			0732									57	
A	N-1	963	Bartmus			0732									57	
A	F-7	935	Douming			0733									57	
A	F	702	Stue			0733						C			1100	
A	H-1	701	Greene			0737									1053	spare

109

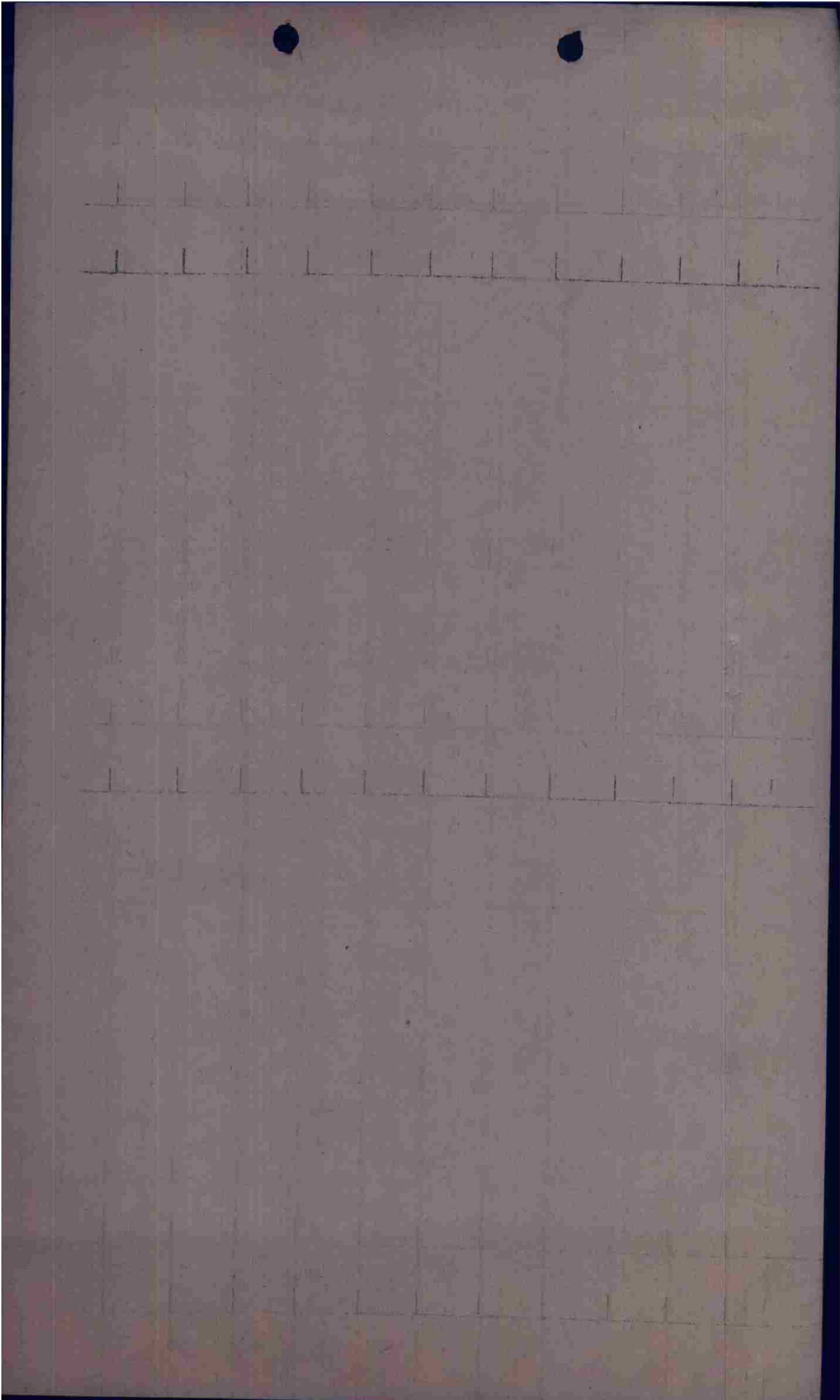
Mission No. 48
Box II

So

MAY 15 1944

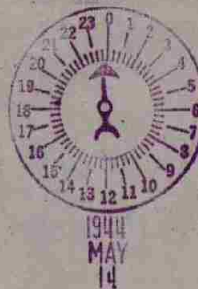
S Q D N	A / C LTR	A / C NO.	PILOT	D I S T A N C E	TARGET	A T O	ENG. COAST OUT	ENERGY COAST IN	T O T	ENERGY COAST OUT	ENG. COAST IN	C A M E R A	F U L L O A D	B O M B A R D	E N D U R	L A T I T U D E	R E M A R K S
A	M	195	Hulse		Crell Alf	0733	0830 Beachy Head 11,500	0845 Fire tax 11,500	0918	0946 Fire tax 10,000	1004 Beachy Head 9,000	Hc	795	500 GP	4	1118	
B	T	135	McNulty			0733										17	
D	G	225	Mc Glahn			0733										15	
D	P	951	Demand			0734										19	
D	V	493	Merchant York			0734										20	
D	B	937	Durante			0734										21	
B	Q	900	Mortone			0734										1947	
B	G-1	390	Mac Manus			0734										1111	
B	V-1	840	Gullion			0735										12	
B	O	376	Fely			0735										0746	
B	F-1	189	Demum			0735										1111	
B	R	679	Dontos			0735										12	
A	J	444	Sommers			0736										02	
B	J-1	983	Fentth			0736										03	
B	A	181	Land			0736										04	
B	W	743	Siggs			0736										05	
B	C	911	Shainberg			0737										1045	
D			Heues		Port Airborne												
D	D	219	Yosty Merchant			0737										1105	Spare

The image shows a page of lined paper with two punch holes at the top. The page is filled with a grid of approximately 15 columns and 25 rows. Faint, illegible handwriting is visible in the left margin, possibly representing a list of items or a ledger. The paper is otherwise blank.



612

OICOG OIHAK OIGOF OIYAA V OILAI 1/14 "OP"
 FROM 97TH COMBAT BOMB WING 14/2130B M-78-E
 TO COMBOMCOM IX
 COBOMGP 409
 COBOMGP 410
 COBOMGP 416



OPERATIONAL PRIORITY BT
 SECRET SENT IN CLEAR AUTH. MAJOR CLARENCE S. TOWLES JR.

97TH COMBAT BOMB WING
 A P O 140
 14 MAY 1944

FIELD ORDER NO. 41-315

MAPS NORMAL

1. B. (2) THE VIII AAF IS ATTACKING MILITARY OBJECTIVES IN FRANCE.
 THE 98TH WING IS ATTACKING Z-830, Z-460
 THE 99TH WING IS ATTACKING Z-338 AND Z-460
 THE RAF II GROUP WILL FURNISH SPITFIRE ESCORT FOR ALL
 GROUPS OF THIS WING.
2. THIS WING WILL ATTACK AN AIRDROME IN FRANCE.

ZERO HOUR 15/0830B

3. A. 409TH BOMB. GROUP

- (3) WITH SPITFIRES ESCORT AT BEACHYHEAD AT 12,000 FEET
 AT ZERO HOUR PLUS 10 MINUTES.
- (4) BASE TO BEACHYHEAD TO ETRETAT TO 49 DEGREES 15 MINUTES
 NORTH 01 DEGREES 00 MINUTES EAST TO I.P. TO TARGET.
- (6) BOMB 12,000 FEET CROSS ENEMY COAST OUT 10,000 FEET.
- (9) ILL. 1604/5 REF. 18 A/C 068020
 REF. 18 A/C 083048

B. 410TH BOMB. GROUP

- (3) WITH 416TH GROUP AT SHEERNESS AT 10,000 FEET AT ZERO
 HOUR MINUS 12 MINUTES THE 416 TH GROUP WILL LEAD
 THE 416TH GROUP WILL LEAVE SHEERNESS ON COURSE TO BEACHYHEAD
 AT ZERO HOUR MINUS 12 MINUTES.
- (6) BOMB 12,000 FEET, CROSS ENEMY COAST OUT AT 10,000 FEET.
- (9) ILL. 1604/5 REF. 068020
- (12) RENDEZVOUS WITH SPITFIRES ESCORT AT 12,000 FEET AT
 BEACHYHEAD AT ZERO HOURS.

C. 416TH BOMB. GROUP

- (3) WITH 410TH GROUP AT SHEERNESS AT 10,000 FEET AT ZERO HOUR
 MINUS 12 MINUTES THE 416TH GROUP WILL LEAD. THE 416TH
 GROUP WILL LEAVE SHEERNESS ON COURSE TO BEACHYHEAD AT ZERO
 HOUR MINUS 12 MINUTES.
- (6) BOMB 11,500 FEET, CROSS ENEMY COAST OUT AT 10,000 FEET
- (9) ILL. 1604/5 REF. 066021
- (12) RENDEZVOUS WITH SPITFIRE ESCORT AT 11,500 FEET AT
 BEACHYHEAD AT ZERO HOUR.

X. (1)-(4) NO CHANGES

- (5) TARGET: Z-354 SECONDARY Z-154
- (6) A/C REQUIRED: 2 BOXES 18 A/C EACH GROUP
- (7) ROUTE BACK: TARGET TURN LEFT TO R.P. TO 49 DEG. 15 MIN. NORTH
 01 DEG. 00 MIN EAST TO ETRETAT TO BEACHY HEAD TO BASE.
- (8) INITIAL POINT: 49DEG 06 MIN NORTH 02 DEG. 43 MIN. EAST.
- (9) AXIS OF ATTACK: GENERALLY SOUTH EAST TO NORTHWEST.
- (10) BOMB LOAD: 4X500 LB G.P. FUSED 1/10 NOSE 1/100 TAIL.
- (11) RALLY POINT 49DEG. 20 MIN. NORTH
 02 DEG. 19 MIN. EAST

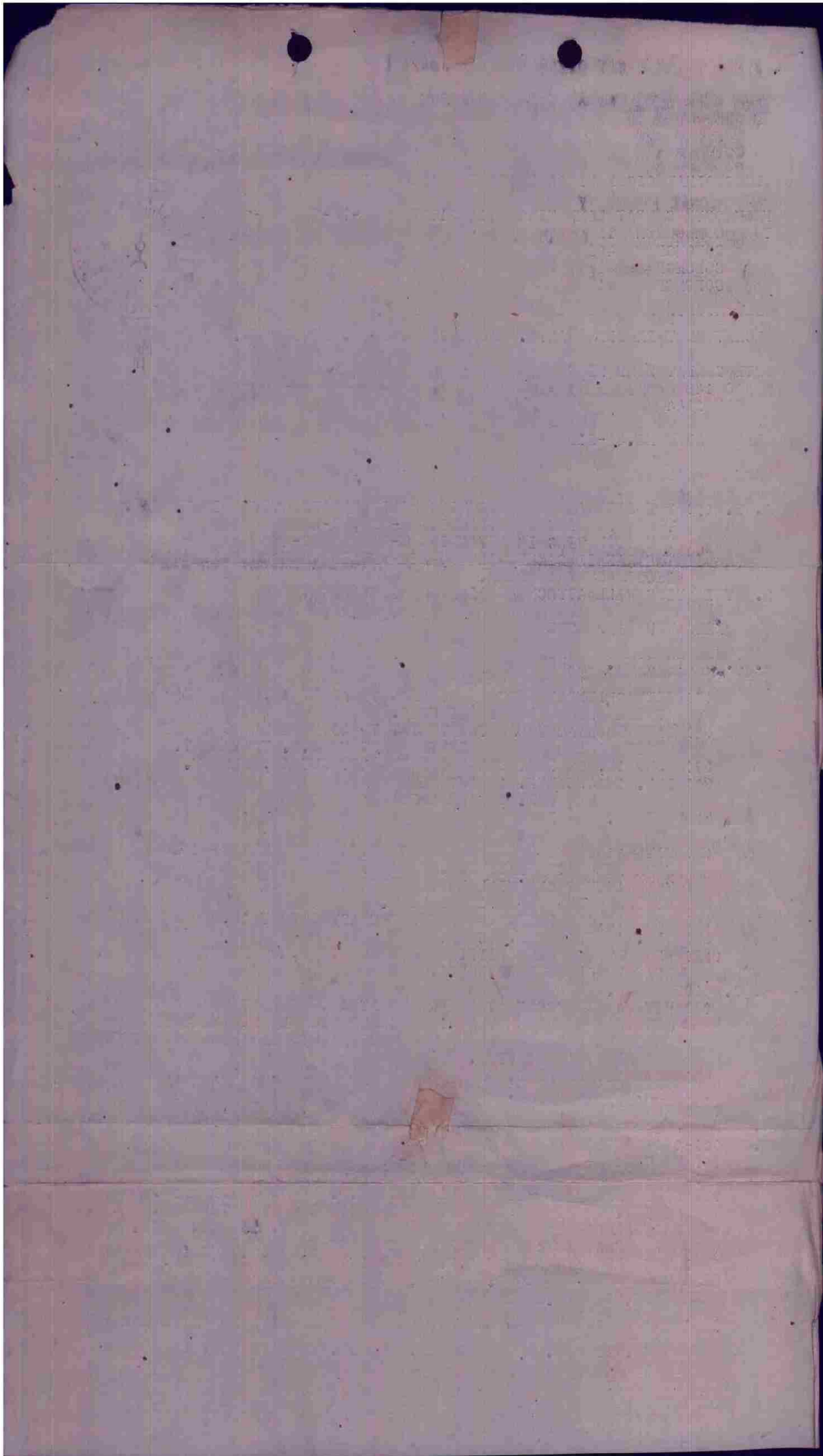
PAR. 3B AND 3C

- (12) ROUTE OUT: BASE TO SHEERNESS TO BEACHY HEAD TO ETRETAT TO
 49DEG. 15 MIN. NORTH 01 DEG. 00 MIN. EAST TO I.P. TO
 TARGET

XXXXXXXX XXXXXX

- (13) THE 416TH AND 410TH WILL COORDINATE TAKE OFF TIMES SO THAT
 THE 416TH BOMB GROUP TAKES OFF ~~TEN~~ MINUTES AHEAD OF THE
 410TH BOMB GROUP.

TEN



4. ~~2220~~ NO CHANGE

5. COMMUNICATIONS:

A. 409TH BOMB. GROUP

(2) LADYMAN

(9) 2/2

(10) 102/102

B. 410TH BOMB. GROUP

(2) FEETACHE

(9) 1/1

(10) 101/101

C. 416TH BOMB. GROUP

(2) KEEPSTONE

(9) 1/1

(10) 101/101

X. GENERAL INFORMATION:

(2) WEST MALLING D/D

(10) VTBA/VTBA

(11) HOMING FACILITIES TO BRIGHTON AREA AVAILABLE ON COMMAND CONTROL CHANNEL C/C, C/S PARADE

(12) BOX LEADERS WILL REPORT TO COMMAND CONTROL ON CHANNEL 'C' WHEN LEAVING TARGET AREA.

COCBTWIG 97

BT 14/2330B

AS FK

CC. 1.B. (2) LINE 2 THE 98TH WING IS ATTACKING Z-830 Z-140 AND Z-460

3. B. (3) WITH 416TH GROUP AT SHEERNESS AT 10,000 FEET

3. X. (8) INITIAL POINT 49DEGREES 06 MINUTES NORTH 02 DEGREES 43 MINUTES EAST

3. X. (13) THE 416TH AND 410TH

AR

S

OIGOF R.....14/2354B SK AR

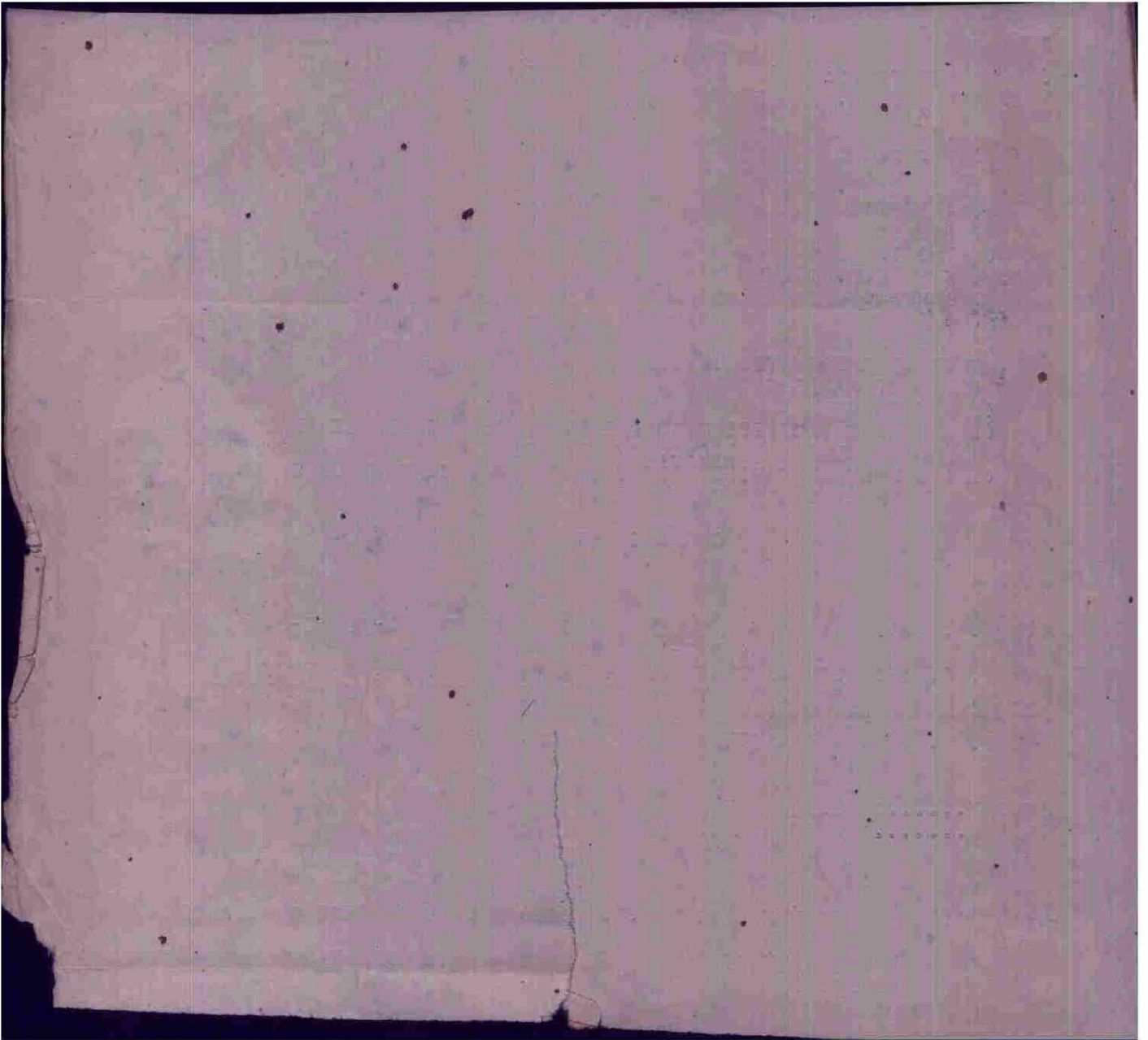
OIYAA R.....14/2355B WJF AR

-1534 AFTER FIG KKK .AFTER 3.X. (13) WHAT IS THAT NO CHANGE

4 KKK

D DO YOU MEAN THAT THAT IS 4 NO CHANGE YES PS PLS

ROROO AND R FOR IT T B FOR R



OICOG OIHAK OIGOF OYIAA V OILAI 04/15 OP
FROM 97TH BOMB COMBAT WING 15/0120B M-61-E
TO COMBOMCOM IX
COBOMGP 409
COBOMGP 410
COBOMGP 416

615

OPERATIONAL PRIORITY BT

SECRET SENT IN THE CLEAR AUTH: MAJOR CLARENCE S. TOWLES JR.

97TH COMBAT BOMB WING
APO 140
16 MAY 1944

ANNEX NR 1 TO F.O. 41-315

- X. PAR 3B AND 3C
- (12) ROUTE OUT: BASRXXXXXX BASE TO SHEERNESS, ETC.
- (13) THE 416TH GP AND 410 TH GP WILL CORXXX COORDINATE TAKE OFF TIME SO THAT THE 416 GP TAKES OFF 10 MINUTES AHEAD OF THE 410TH GP.

COCBTWIG 97

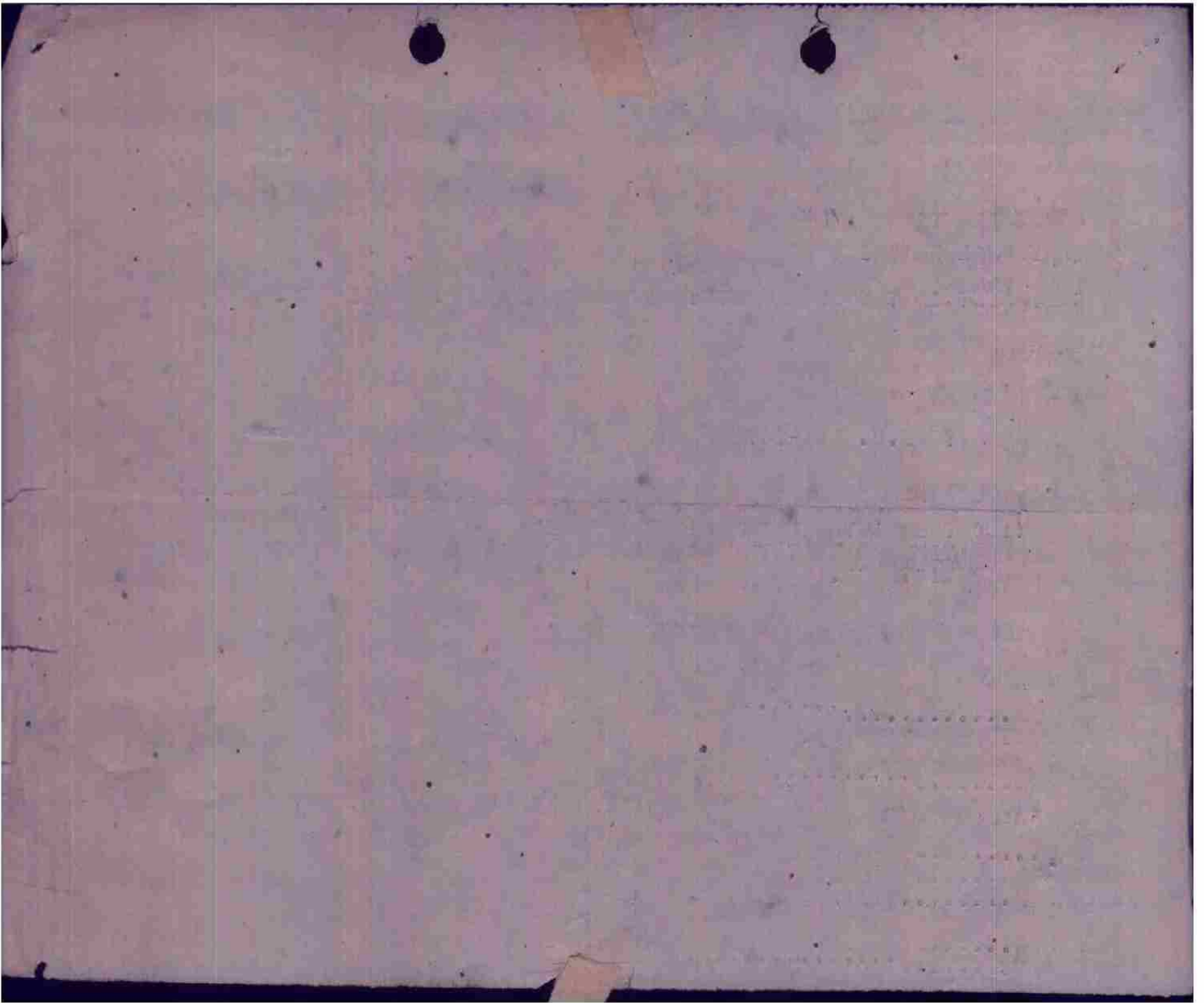
BT 15/0120B

PL AR K
OICOG R.....
3 5TH LINE 15 MAY 1944

OIG R.....
OICOG SWBD SAY DID U NOT GET THAT SIG I JUST SENT KK THIS IS LAI
SJS TIC

YAA R.....
OIGOF R.....15/0124B SK AR
DIYAA R.....15/0124B RSS AR AR

OIHAK R.....15/0125B MC KKK
OICOG R..... OICOG SWBD
DID U GET THAT LAST SIG I JUST SENT THIS IS LAI



gpr

LAI V YAA YAA 9/15 .R

FROM COBOMGR 416 15/1350 B
TO COBOMCOBATWG 97 ATT: SIG O
CONFIDENTIAL BT

M-450-J

A - YS - 46

B - 15 MAY 1944 (0750-1026)

C - 668(9) B D XZ X-1 N-1 F-2 R H-1 M J
669(11) T Q G-1 V -1 O P-1 R J A W C
670(8) T L A F-1 N S K-1 G
671(10) F K H X G P B V C-1 D
TOTAL - 38

D - 671 - H - TUNNEL INTERPHONE OUT.

E - NONE

F - NOT APPLICABLE

G - NOT APPLICABLE

H - NOT APPLICABLE

I - NONE

J - 670 - J- USED FOR LANDING AND FLIGHT INSTRUCTIONS.

K - NONE

L - 670 - M J - REPORTED TO BOMCOM AFTER LEAVING TARGET AREA.
668 - M - REPORTED TO 670 - J - THAT SECOND BOX DIDN'T BOMB.

M - NONE

N - NOT APPLICABLE

O - EXCELLENT RADIO PERFORMANCE.

MACE COBOMGR 416

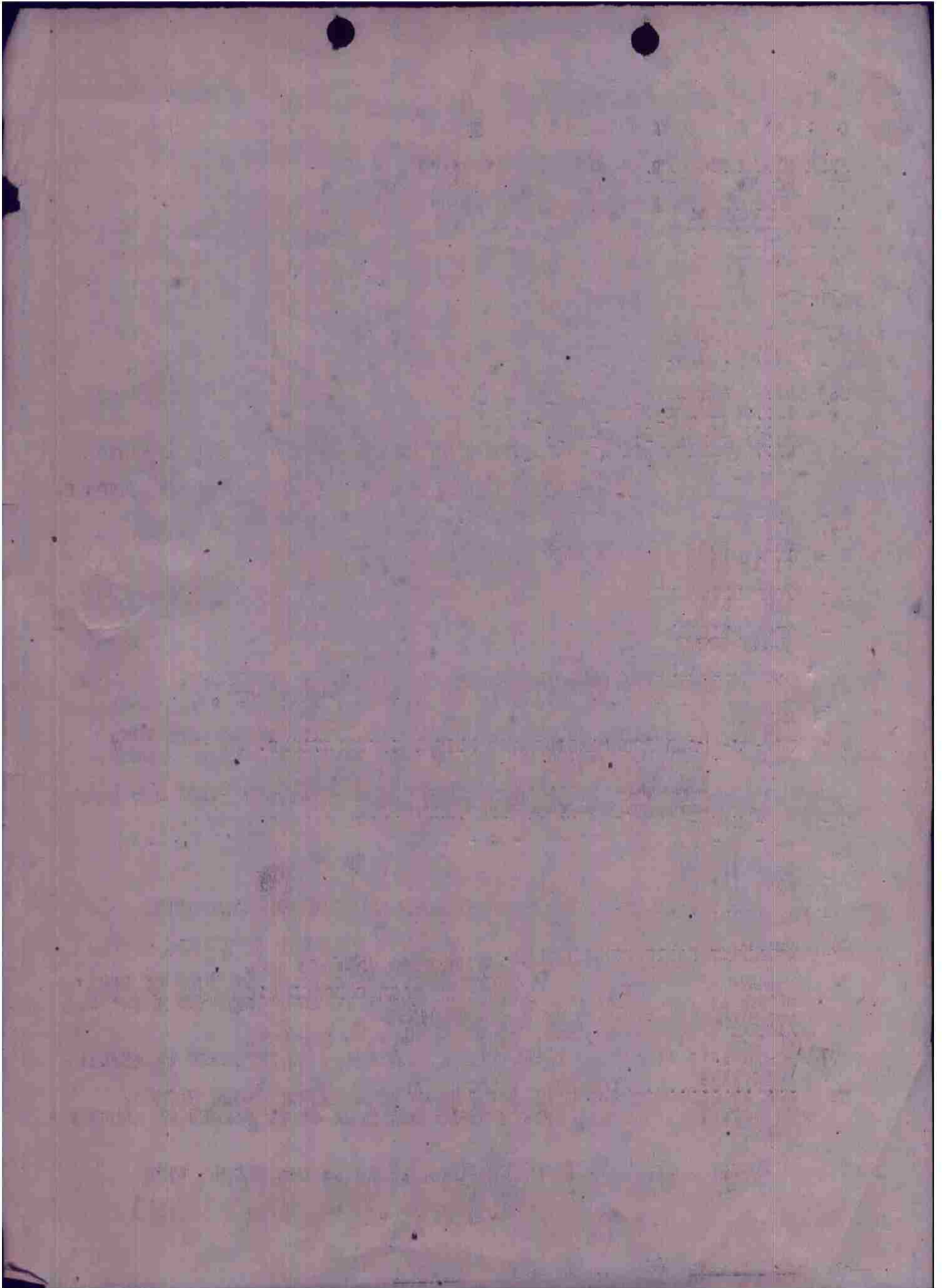
BT 15/1350B

AS

GP AR

LAI R....."15/1400B

LEG AR



OICOG OILAI V OIYA A YAA 7/15 OP
 FROM 416TH BOMB GROUP (L) 15/1310B
 TO HQ IX BOMBER COMMAND ATTN: A-2
 HQ 97TH COMBAT WING ATTN: A-2
 CONFIDENTIAL BT

M-448-D

OPFLASH NO. 43 FOR 15 MAY 1944

- M 448 D
- A. (I) S 1604
 (II) S 1604
- B. (I) 416TH BG
 (II) 37 A-20'S
 (III) 19 A/C ON PRIMARY
 (IV) 18 A/C FAILED TO BOMB: 1 A/C ~~RETKEX~~ RETURNED EARLY. RADIO HATCH BLEW OFF ON T/O. 16 A/C SECOND BOX DID NOT BOMB BECAUSE LEADER DID NOT DROP FOR REASON STATED IN PARAGRAPH E.
- C. (I) 0727
 (II) 0918
 (III) 1121
- D. (I) NIL
 (II) 0-0-0
 (III) 0-0-0
- E. BOX I: EXCELLENT ~~RETKEX~~ CONCENTRATION ON TARGET. PROBABLE HITS ON A.P. WITH GOOD PATTERN ON BRIEFED MPI.
~~RETKEX~~
 BOX II: NO ATTACK. CLOUDS OBSCURED VIEW OF TARGET ON BOMB RUN. FLEW OVER BREAK IN CLOUDS OVER TARGET TOO LATE TO MAKE CORRECTION FOR DROPPING ON TARGET.
~~RETKEX~~ POOR INTERPHONE COMMUNICATION BETWEEN PILOT AND B/W PREVENTED PROPER PDI CORRECTION.
- F. (I) (A) NIL
 (B) NIL
 (II) (A) NIL
 (B) WEAK INACCURATE HFF BETWEEN LOUVRES AND DAMMARTIN.
- G. BALLOONS ATXXX ANTICIPATED AT LEMESNIL WERE NOT OBSERVED.
 1 A/C OF 416TH BG WITH ENGINE SMOKING ON BOMB RUN.
 DINGHY SURROUNDED BY DYEMARKER OBSERVED FROM 10,000 FEET AT 1001 HOURS AT APPROXIMATELY 50 DEGREES 15' N 00 ~~RETKEX~~ DEGREES E 12' E. (PREVIOUSLY REPORTED AS HOT NEWS.)
 20 CAR TRAIN MOVING INTO PARIS ON RR FROM NANTEIL.
 NORTH HALF OF M/Y AT CRIEL HEAVILY DAMAGED. NO EVIDENCE OF REPAIR ACTIVITY.
- KX M/Y AT BEAUMONT-SUR-OISE 3/4 FILLED WITH ~~RETKEX~~ GOODS WAGONS. NO ACTIVITY AT CRIEL A/D. 1 DUMMY A/C SEEN IN SW CORNER OF LANDING AREA.
- H. ~~RETKEX~~ (I) VISIBILITY 10 MILES PLUS. .7 TO .8 LOW CLOUDS WITH TOPS TO 9,000 FEET. BREAK IN CLOUDS DIRECTLY OVERKET TARGET.
 (II) VISIBILITY 10 MILES PLUS. .8 TO .9 LOW CLOUDS WITH TOPS TO 9,000 FEET.
- I. ON PRIMARY 74 X 500 GP.
 JETTISONED 2 X 500 GP. IN CHANNEL.
 RETURNED 72 X 500 GP.
- J. 12,000 FEET

MACE COBOMGR 416

HTA15/1310B
 AS
 GP AR
 OICOG R.....15/1345B DEF AR
 OILAI R.....15/1345B
 LEG AR ARM

